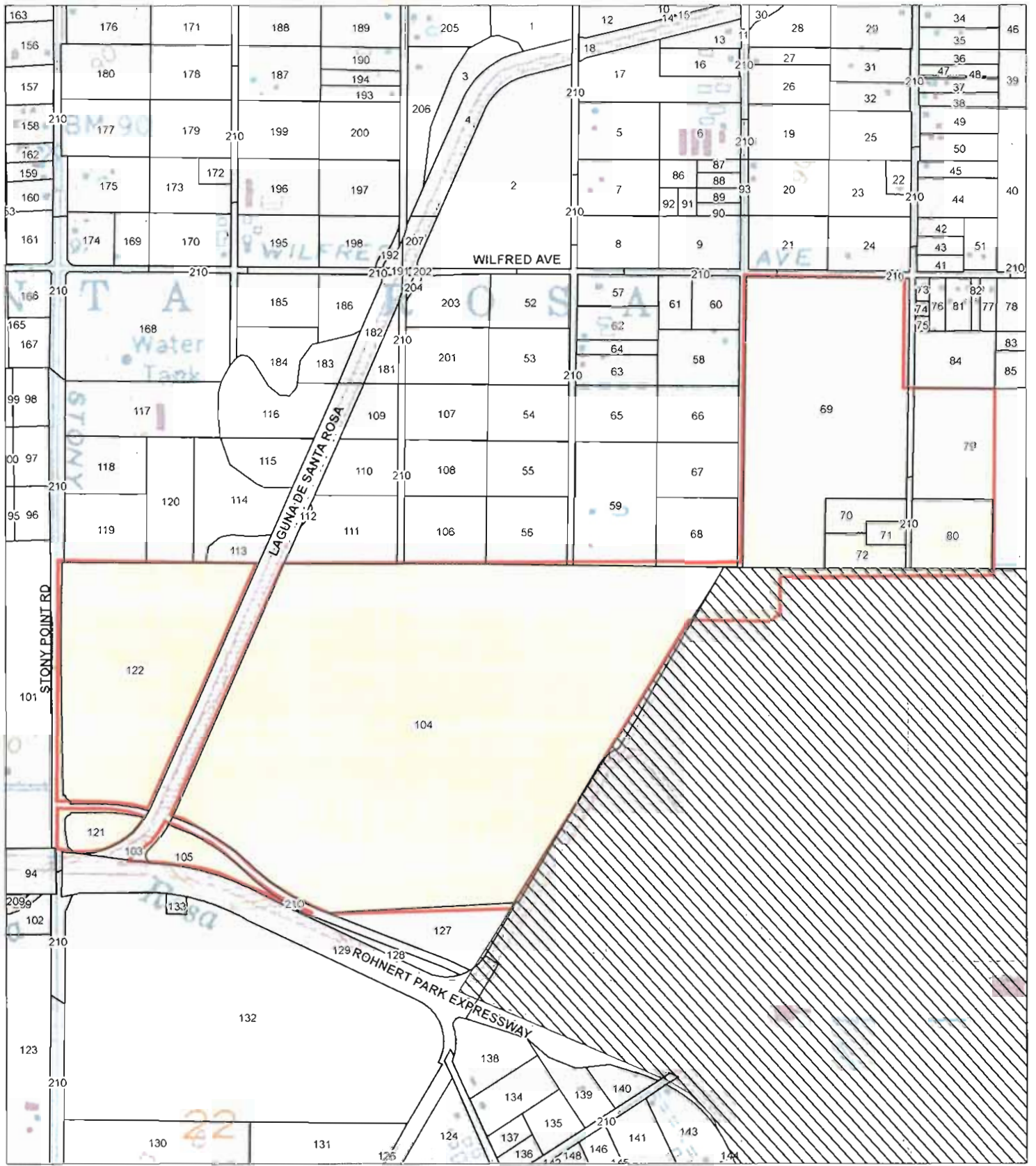


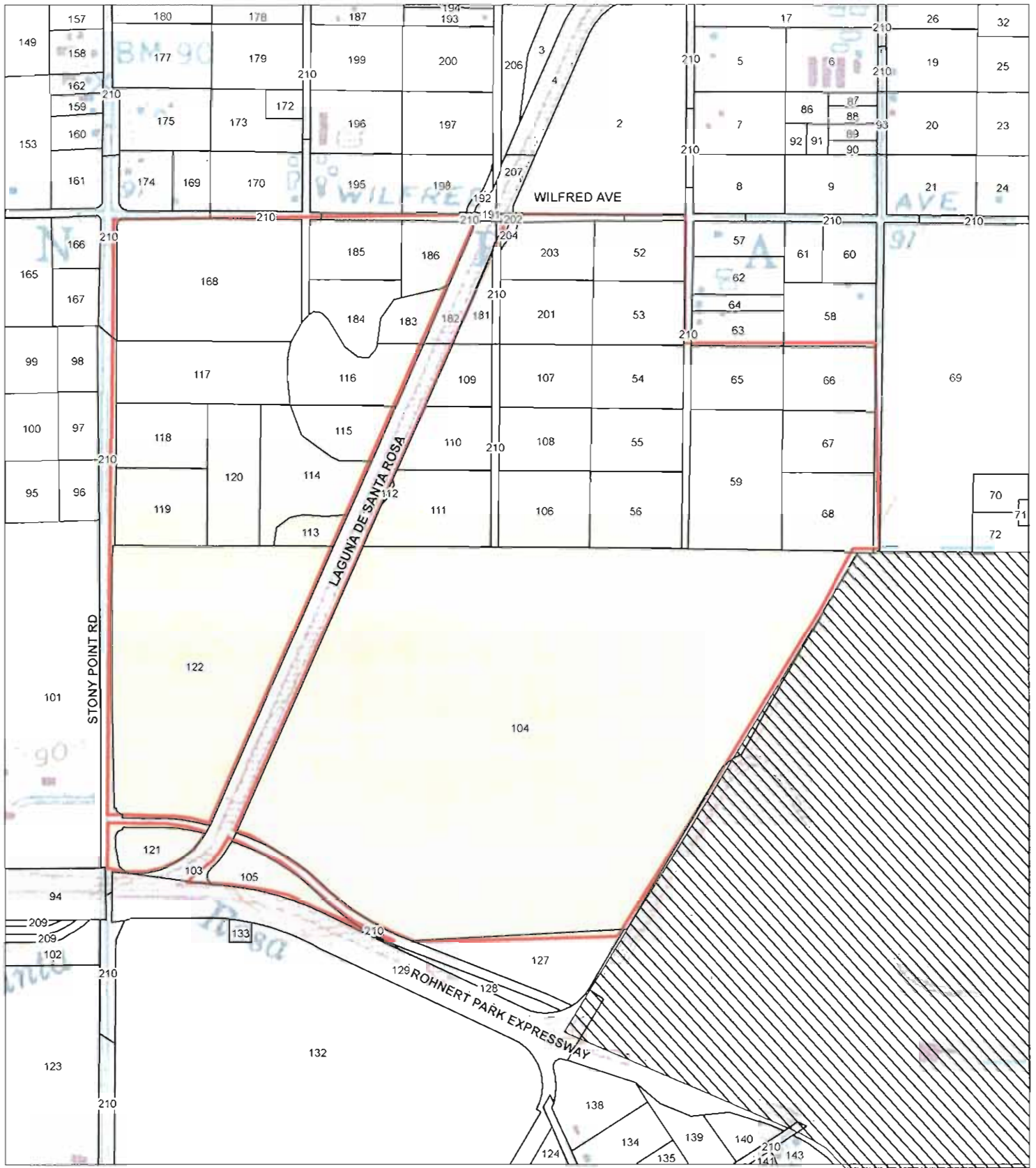
APPENDIX Q

Project Land Use Zoning Combining Districts



LEGEND

Parcels*	City of Rohnert Park	* NOTE: See Table 1 in document for APN number
Wilfred Site		 NORTH Feet 0 450 900



LEGEND

Parcels*	City of Rohnert Park	<small>* NOTE: See Table 1 in document for APN number</small>
Stony Point Site		

SOURCE: Sonoma County GIS, 2007; AES, 2007

Appendix Q - Figure 2
Stony Point Site Parcels

TABLE 1
LAND USE ZONING COMBINING DISTRICTS – WILFRED AND STONY POINT SITES

Map Id No.	APN	Primary Zone	Combining District(s)
1	045-051-013	RR B6 5	VOH
2	045-051-015	AR B6 10	SR VOH
3	045-051-016	RR B6 5	VOH
4	045-051-018	RR B5 5, AR B6 10	VOH
5	045-052-006	RR B6 10	SR VOH
6	045-052-007	RR B6 10	SR VOH
7	045-052-008	RR B6 10	SR VOH
8	045-052-010	RR B6 10	SR VOH
9	045-052-011	RR B6 10	SR VOH
10	045-052-016	RR B6 10	VOH
11	045-052-027	RR B6 10	SR VOH
12	045-052-028	RR B6 10	VOH
13	045-052-030	RR B6 10	SR VOH
14	045-052-031	RR B6 10	VOH
15	045-052-033	RR B6 5	VOH
16	045-052-037	RR B6 10	SR VOH
17	045-052-038	RR B6 10	SR VOH
18	045-052-039	RR B6 10	VOH
19	045-053-005	RR B6 10	SR VOH
20	045-053-007	RR B6 10	SR VOH
21	045-053-009	RR B6 10	SR VOH
22	045-053-012	RR B6 10	SR VOH
23	045-053-013	RR B6 10	SR VOH
24	045-053-014	RR B6 10	SR VOH
25	045-053-022	RR B6 10	SR VOH
26	045-053-024	RR B6 10	SR VOH
27	045-053-025	RR B6 10	SR VOH
28	045-053-031	RR B6 10	SR VOH
29	045-053-032	RR B6 10	SR VOH
30	045-053-033	RR B6 10	SR VOH
31	045-053-034	RR B6 10	SR VOH
32	045-053-035	RR B6 10	SR VOH
33	045-054-001	RR B6 10	SR VOH
34	045-054-005	RR B6 10	SR VOH
35	045-054-009	RR B6 10	SR VOH
36	045-054-010	RR B6 10	SR VOH
37	045-054-012	RR B6 10	SR VOH
38	045-054-013	RR B6 10	SR VOH
39	045-054-014	RR B6 10	SR VOH
40	045-054-021	RR B6 10	SR VOH
41	045-054-024	RR B6 10	SR VOH
42	045-054-025	RR B6 10	SR VOH
43	045-054-026	RR B6 10	SR VOH
44	045-054-027	RR B6 10	SR VOH

TABLE 1
LAND USE ZONING COMBINING DISTRICTS – WILFRED AND STONY POINT SITES

Map Id No.	APN	Primary Zone	Combining District(s)		
45	045-054-028	RR B6 10	SR	VOH	
46	045-054-030	RR B6 10	SR	VOH	
47	045-054-031	RR B6 10	SR	VOH	
48	045-054-032	RR B6 10	SR	VOH	
49	045-054-035	RR B6 10	SR	VOH	
50	045-054-036	RR B6 10	SR	VOH	
51	045-054-041	RR B6 10	SR	VOH	
52	045-071-002	LEA B6 60	SR	VOH	
53	045-071-003	LEA B6 60	SR	VOH	
54	045-071-004	LEA B6 60	SR	VOH	F2
55	045-071-005	LEA B6 60	SR	VOH	F2
56	045-071-006	LEA B6 60	SR	VOH	F2
57	045-072-001	DA B6 10	SR	VOH	
58	045-072-004	DA B6 10	SR	VOH	
59	045-072-006	DA B6 10	SR	VOH	F2
60	045-072-007	DA B6 10	SR	VOH	
61	045-072-008	DA B6 10	SR	VOH	
62	045-072-009	DA B6 10	SR	VOH	
63	045-072-010	DA B6 10	SR	VOH	
64	045-072-011	DA B6 10	SR	VOH	
65	045-072-012	DA B6 10	SR	VOH	
66	045-072-013	DA B6 10	SR	VOH	
67	045-072-014	DA B6 10	SR	VOH	
68	045-072-015	DA B6 10	SR	VOH	
69	045-073-001	DA B6 10	SR	VOH	
70	045-073-002	DA B6 10	SR	VOH	
71	045-073-003	DA B6 10	SR	VOH	
72	045-073-004	DA B6 10	SR	VOH	
73	045-074-001	RR B6 10	SR	VOH	
74	045-074-002	RR B6 10	SR	VOH	
75	045-074-003	RR B6 10	SR	VOH	
76	045-074-004	RR B6 10	SR	VOH	
77	045-074-006	RR B6 10	SR	VOH	
78	045-074-007	RR B6 10	SR	VOH	
79	045-074-009	DA B6 10	SR	VOH	
80	045-074-010	DA B6 10	SR	VOH	
81	045-074-011	RR B6 10	SR	VOH	
82	045-074-012	RR B6 10	SR	VOH	
83	045-074-014	DA B6 10	SR	VOH	
84	045-074-015	DA B6 10	SR	VOH	
85	045-074-016	DA B6 10	SR	VOH	
86	045-310-009	RR B6 10	SR	VOH	
87	045-310-010	RR B6 10	SR	VOH	
88	045-310-011	RR B6 10	SR	VOH	

TABLE 1
LAND USE ZONING COMBINING DISTRICTS – WILFRED AND STONY POINT SITES

Map Id No.	APN	Primary Zone	Combining District(s)						
89	045-310-012	RR B6 10	SR	VOH					
90	045-310-013	RR B6 10	SR	VOH					
91	045-310-014	RR B6 10	SR	VOH					
92	045-310-015	RR B6 10	SR	VOH					
93	045-310-ROW								
94	046-011-013	LEA B6 60	SR	VOH	F1	F2	BR	Z	
95	046-011-029	DA B6 10	SR	VOH					
96	046-011-030	DA B6 10	SR	VOH					
97	046-011-031	DA B6 10	SR	VOH					
98	046-011-032	DA B6 10	SR	VOH					
99	046-011-033	DA B6 10	SR	VOH					
100	046-011-034	DA B6 10	SR	VOH					
101	046-011-035	DA B6 10	SR	VOH	F1	F2	BR	Z	
102	046-011-036	LEA B6 60	SR	VOH	F1	F2			
103	046-021-017	LEA B6 60	SR	VOH	F2	BR			
104	046-021-020	LEA B6 60	SR	VOH	F2	Z			
105	046-021-021	LEA B6 60	SR	VOH	F2	Z			
106	046-021-024	LEA B6 60	SR	VOH	F2				
107	046-021-025	LEA B6 60	SR	VOH	F2				
108	046-021-026	LEA B6 60	SR	VOH	F2				
109	046-021-027	LEA B6 60	SR	VOH	F2				
110	046-021-028	LEA B6 60	SR	VOH	F2				
111	046-021-029	LEA B6 60	SR	VOH	F2				
112	046-021-030	LEA B6 60	SR	VOH	F2				
113	046-021-031	LEA B6 60	SR	VOH	F2				
114	046-021-032	LEA B6 60	SR	VOH	F2				
115	046-021-033	LEA B6 60	SR	VOH	F2				
116	046-021-034	LEA B6 60	SR	VOH	F2				
117	046-021-035	LEA B6 60	SR	VOH	F2				
118	046-021-036	LEA B6 60	SR	VOH	F2				
119	046-021-037	LEA B6 60	SR	VOH	F2				
120	046-021-038	LEA B6 60	SR	VOH	F2				
121	046-021-039	LEA B6 60	SR	VOH	BR	F2			
122	046-021-040	LEA B6 60	SR	VOH	F2	Z			
123	046-031-021	LEA B6 60	SR	VOH	F1	F2		Z	
124	046-032-021	AR B6 5		VOH					
125	046-032-024	LEA B6 60		VOH	Z				
126	046-032-026	LEA B6 60	SR	VOH	F2				
127	046-032-028	LEA B6 60	SR	VOH	F2	Z			
128	046-032-029	LEA B6 60	SR	VOH	F2	Z			
129	046-032-031	LEA B6 60	SR	VOH	BR	F2		Z	
130	046-032-033	LEA B6 60	SR	VOH	F2	Z			
131	046-032-034	LEA B6 60	SR	VOH	Z				
132	046-032-035	LEA B6 60	SR	VOH	F2	Z			

TABLE 1
LAND USE ZONING COMBINING DISTRICTS – WILFRED AND STONY POINT SITES

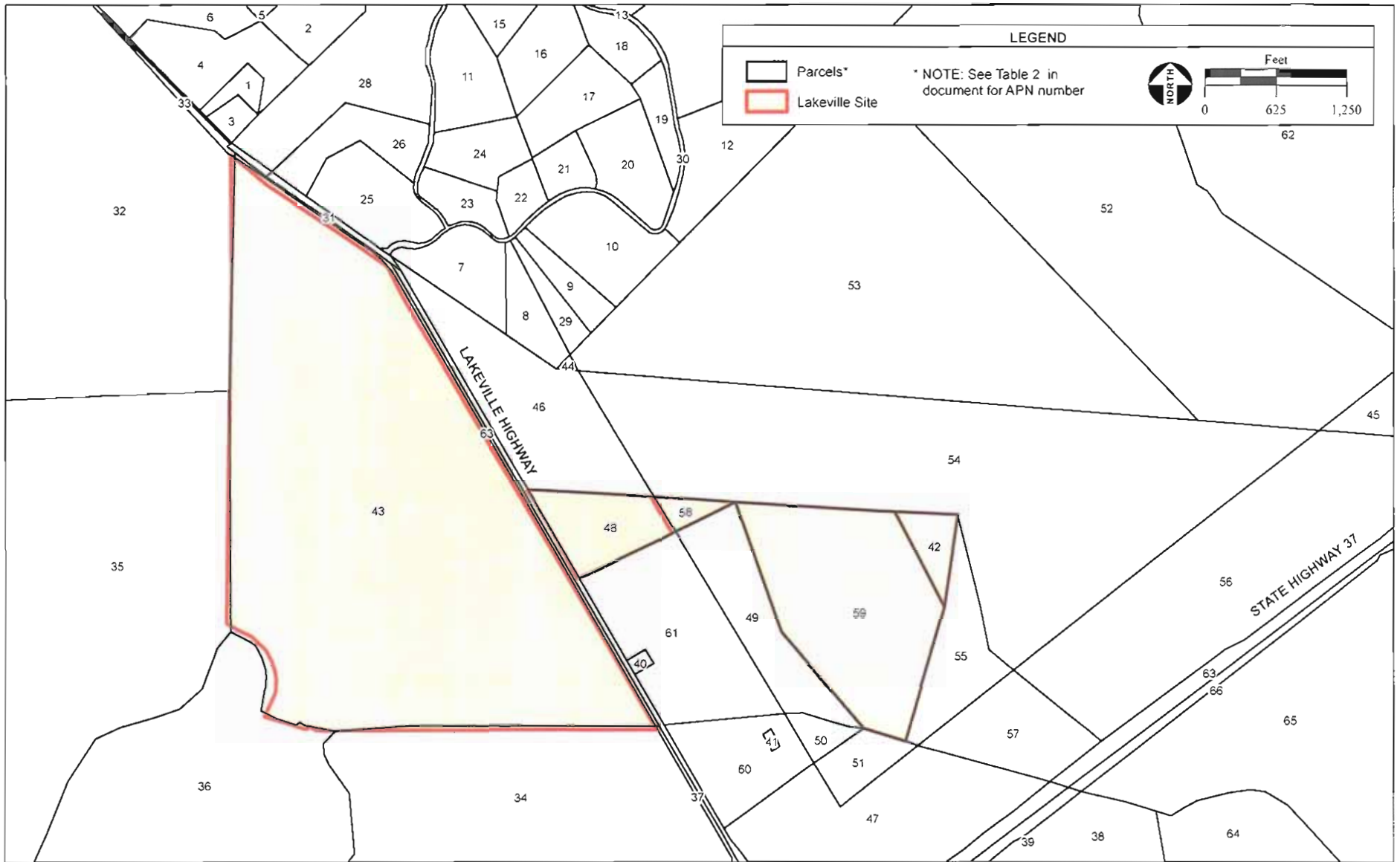
Map Id No.	APN	Primary Zone	Combining District(s)			
			SR	VOH	F2	Z
133	046-032-036	LEA B6 60	SR	VOH	F2	Z
134	046-071-003	AR B6 5		VOH	F2	
135	046-071-006	AR B6 5		VOH	F2	
136	046-071-011	AR B6 5		VOH	F2	
137	046-071-012	AR B6 5		VOH	F2	
138	046-071-014	AR B6 5		VOH	F2	
139	046-071-015	AR B6 5		VOH	F2	
140	046-071-016	AR B6 5		VOH	F2	
141	046-072-002	AR B6 5		VOH	F2	
142	046-072-004	AR B6 5		VOH	F2	
143	046-072-009	AR B6 5		VOH	F2	
144	046-072-017	AR B6 5		VOH	F2	
145	046-072-021	AR B6 5		VOH	F2	
146	046-072-022	AR B6 5		VOH	F2	
147	046-072-023	AR B6 5		VOH	F2	
148	046-072-024	AR B6 5		VOH	F2	
149	134-253-007	AR B6 5		VOH	J	
150	134-253-018	AR B6 5		VOH	J	
151	134-253-019	AR B6 5		VOH	J	
152	134-253-023	AR B6 5		VOH	J	
153	134-253-024	AR B6 5		VOH	J	
154	134-253-025	AR B6 5		VOH	J	
155	134-253-026	AR B6 5		VOH	J	
156	134-253-027	AR B6 5		VOH	J	
157	134-253-028	AR B6 5		VOH	J	
158	134-253-029	AR B6 5		VOH	J	
159	134-253-030	AR B6 5		VOH	J	
160	134-253-031	AR B6 5		VOH	J	
161	134-253-032	AR B6 5		VOH	J	
162	134-253-033	AR B6 5		VOH	J	
163	134-253-034	AR B6 5		VOH	J	
164	134-256-003	DA B6 10	SR	VOH		
165	134-256-004	DA B6 10	SR	VOH		
166	134-256-005	DA B6 10	SR	VOH		
167	134-256-006	DA B6 10	SR	VOH		
168	134-261-003	LEA B6 60	SR	VOH	F2	
169	134-262-002	RR B6 5		VOH	J	
170	134-262-003	RR B6 5		VOH		
171	134-262-013	RR B6 5		VOH		
172	134-262-020	RR B6 5		VOH		
173	134-262-022	RR B6 5		VOH		
174	134-262-024	RR B6 5		VOH	J	
175	134-262-025	RR B6 5		VOH	J	
176	134-262-026	RR B6 5		VOH	J	

TABLE 1
LAND USE ZONING COMBINING DISTRICTS – WILFRED AND STONY POINT SITES

Map Id No.	APN	Primary Zone	Combining District(s)		
177	134-262-029	RR B6 5	VOH	J	
178	134-262-030	RR B6 5	VOH		
179	134-262-031	RRB6 5	VOH		
180	134-262-032	RR B6 5	VOH	J	
181	<i>134-264-003</i>	LEA B6 60	SR	VOH	F2
182	134-264-004	LEA B6 60	SR	VOH	F2
183	<i>134-264-005</i>	LEA B6 60	SR	VOH	F2
184	<i>134-264-006</i>	LEA B6 60	SR	VOH	F2
185	<i>134-264-007</i>	LEA B6 60	SR	VOH	
186	<i>134-264-008</i>	LEA B6 60	SR	VOH	F2
187	134-265-003	RR B6 5	VOH		
188	134-265-004	RR B6 5	VOH		
189	134-265-007	RR B6 5	VOH		
190	134-265-009	RR B6 5	VOH		
191	134-265-012	LEA B6 60	VOH		
192	134-265-014	LEA B6 60	VOH		
193	134-265-015	RR B6 5	VOH		
194	134-265-016	RR B6 5	VOH		
195	134-265-017	LEA B6 60	VOH		
196	134-265-018	LEA B6 60	VOH		
197	134-265-019	LEA B6 60	VOH		
198	134-265-020	LEA B6 60	VOH		
199	134-265-021	RR B6 5	VOH		
200	134-265-022	RR B6 5	VOH		
201	<i>134-267-001</i>	LEA B6 60	SR	VOH	F2
202	<i>134-267-004</i>	LEA B6 60	SR	VOH	F2
203	<i>134-267-005</i>	LEA B6 60	SR	VOH	F2
204	<i>134-267-006</i>	LEA B6 60	SR	VOH	F2
205	134-268-003	RR B6 5	VOH		
206	134-268-005	RR B6 5	VOH		
207	134-268-006	RR B6 5	VOH		
208	134-268-008	RR B6 5	VOH		
209	444-444-H2O				
210	<i>999-999-ROW</i>				

Source: Sonoma County Resource and Permit Branch, 2007; AES, 2007

Notes: APN= Assessor Parcel Number, bold APN denote parcels in the Wilfred site, italics denote parcels in the Stony Point site, RR= Rural Residential District, DA= Diverse Agriculture District, LEA= Land Extensive Agriculture District, AR= Agriculture and Residential District, B6= B Combining District 6, SR= Scenic Resources Combining District, F1= Floodway Combining District, F2= Floodplain Combining District, Z= Second Unit Exclusion Combining District, J= Manufactured Home Exclusion Combining District, VOH= Valley Oak Habitat Combining District



SOURCE: Sonoma County GIS, 2007. AES, 2007

Graton Rancheria Casino and Hotel EIS / 203523

Appendix Q - Figure 3
Lakeville Site Parcels

TABLE 2
LAND USE ZONING COMBINING DISTRICTS – LAKEVILLE SITE

Map Id. No.	APN	Primary Zone	Combining Districts			
1	068-100-003	DA B6 20/2	SR	VOH		
2	068-100-015	DA B6 20/2	SR			
3	068-100-025	DA B6 20/2	SR	VOH		
4	068-100-026	DA B6 20/2	SR	VOH		
5	068-100-028	DA B6 20/20, LEA B6 60	SR			
6	068-100-031	DA B6 20/20	SR	VOH	Z	
7	068-100-037	DA B7	SR			
8	068-100-038	DA B7	SR			
9	068-100-039	DA B7	SR			
10	068-100-040	DA B7	SR			
11	068-100-041	DA B7	SR			
12	068-100-042	DA B7, LEA B7	SR			
13	068-100-043	LEA B7	SR			
14	068-100-044	LEA B7	SR			
15	068-100-045	DA B7, LEA B7	SR			
16	068-100-046	DA B7, LEA B7	SR			
17	068-100-047	DA B7	SR			
18	068-100-048	DA B7, LEA B7	SR			
19	068-100-049	DA B7, LEA B7	SR			
20	068-100-050	DA B7	SR			
21	068-100-051	DA B7	SR			
22	068-100-052	DA B7	SR			
23	068-100-053	DA B7	SR			
24	068-100-054	DA B7	SR			
25	068-100-055	DA B7	SR			
26	068-100-056	DA B7	SR			
27	068-100-057	LEA B7	SR	VOH		
28	068-100-058	DA B7, LEA B7	SR			
29	068-100-060	DA B7	SR			
30	068-100-061	ROAD	SR			
31	068-100-ROW					
32	068-120-010	LEA B6 60, LEA B6 20	SR	VOH	F2	
33	068-120-ROW					
34	068-130-009	LEA B6 100	SR	F2		
35	068-130-010	LEA B6 100	F2	Z		
36	068-130-013	LEA B6 100	SR	BR	F2	Z
37	068-130-ROW					
38	068-140-018	LEA B6 100	SR	F2		
39	068-140-ROW					
40	068-150-003	LEA B6 60	SR			
41	068-150-004	LEA B6 100	SR	F2		
42	068-150-006	LEA B6 60	SR			
43	068-150-010	LEA B6 60	SR	VOH	F2	
44	068-150-011	LEA B6 60	SR			
45	068-150-012	LEA B6 60	SR			
46	068-150-014	LEA B6 60	SR			
47	068-150-025	LEA B6 60	SR	F2		
48	068-150-027	LEA B6 60	SR			
49	068-150-028	LEA B6 60	SR	F2		
50	068-150-030	LEA B6 100	SR	F2		
51	068-150-031	LEA B6 100	SR	F2		
52	068-150-033	LEA B6 60	SR	VOH		

TABLE 2
LAND USE ZONING COMBINING DISTRICTS -- LAKEVILLE SITE

Map Id. No.	APN	Primary Zone	Combining Districts		
53	068-150-034	LEA B6 60	SR	VOH	
54	068-150-035	LEA B6 60	SR	VOH	
55	068-150-036	LEA B6 60	SR	VOH	
56	068-150-037	LEA B6 60	SR	F2	
57	068-150-038	LEA B6 60	SR	VOH	F2
58	068-150-039	LEA B6 60	SR		
59	068-150-040	LEA B6 60	SR	VOH	
60	068-150-047	LEA B6 100	SR	F2	
61	068-150-048	LEA B6 60	SR	F2	
62	068-150-056	K	SR	VOH	
63	068-150-ROW				
64	068-160-003	LEA B6 100	SR	F2	
65	068-160-006	LEA B6 100	SR	VOH	F2
66	068-160-ROW				

Source: Sonoma County Resource and Permit Branch, 2007; AES, 2007.

Notes: APN= Assessor Parcel Number, bold APN denote parcels in the Lakeville site
DA= Diverse Agriculture, LEA= Land Extensive Agriculture District, B6= B Combining District 6,
SR= Scenic Resources Combining District, F2= Floodplain Combining District, Z= Second Unit
Exclusion Combining District, VOH= Valley Oak Habitat Combining District, BR= Biotic Resource
Combining District, K= Recreation and Visitor- Serving Commercial District