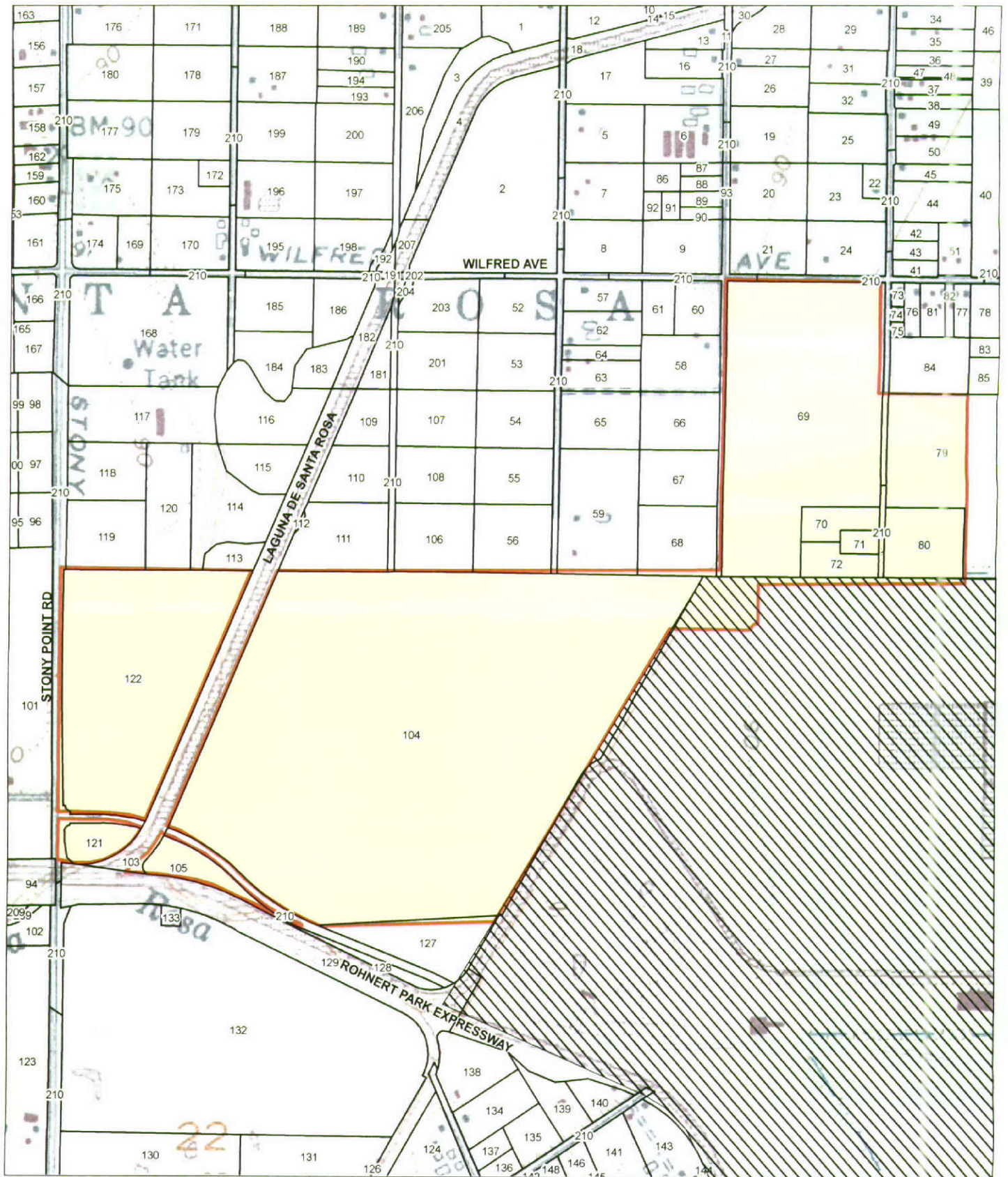


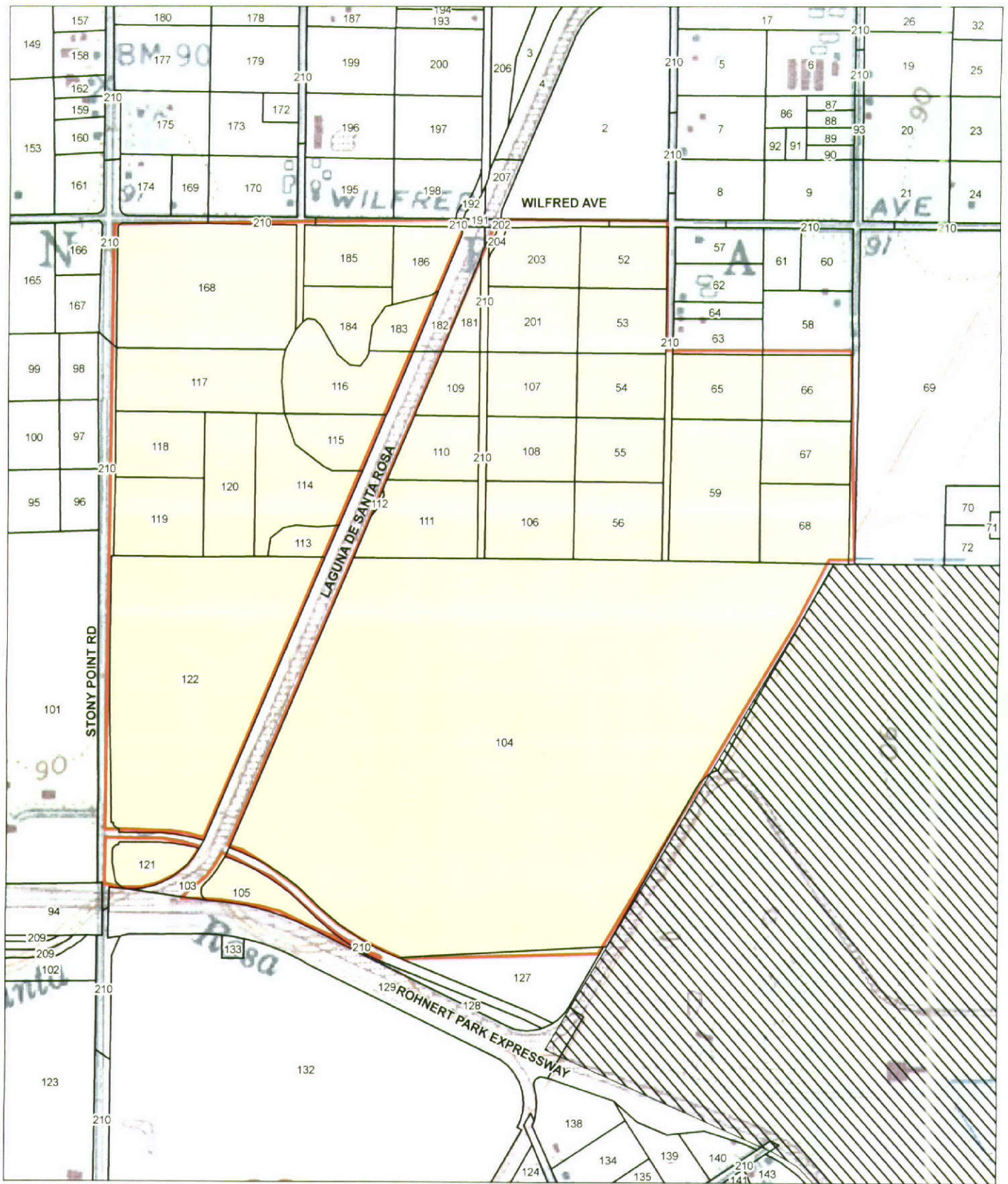
APPENDIX Q

Project Land Use Zoning Combining Districts



LEGEND

| | | | |
|--------------|----------------------|---|---|
| Parcels* | City of Rohnert Park | <i>* NOTE: See Table 1 in document for APN number</i> | |
| Wilfred Site | | | <p style="text-align: center;">Feet 0 450 900</p> |



LEGEND

| | | |
|------------------|----------------------|---|
| Parcels* | City of Rohnert Park | * NOTE: See Table 1 in document for APN number |
| Stony Point Site | | |

TABLE 1
LAND USE ZONING COMBINING DISTRICTS – WILFRED AND STONY POINT SITES

| Map Id No. | APN | Primary Zone | Combining District(s) |
|------------|-------------|-------------------|-----------------------|
| 1 | 045-051-013 | RR B6 5 | VOH |
| 2 | 045-051-015 | AR B6 10 | SR VOH |
| 3 | 045-051-016 | RR B6 5 | VOH |
| 4 | 045-051-018 | RR B5 5, AR B6 10 | VOH |
| 5 | 045-052-006 | RR B6 10 | SR VOH |
| 6 | 045-052-007 | RR B6 10 | SR VOH |
| 7 | 045-052-008 | RR B6 10 | SR VOH |
| 8 | 045-052-010 | RR B6 10 | SR VOH |
| 9 | 045-052-011 | RR B6 10 | SR VOH |
| 10 | 045-052-016 | RR B6 10 | VOH |
| 11 | 045-052-027 | RR B6 10 | SR VOH |
| 12 | 045-052-028 | RR B6 10 | VOH |
| 13 | 045-052-030 | RR B6 10 | SR VOH |
| 14 | 045-052-031 | RR B6 10 | VOH |
| 15 | 045-052-033 | RR B6 5 | VOH |
| 16 | 045-052-037 | RR B6 10 | SR VOH |
| 17 | 045-052-038 | RR B6 10 | SR VOH |
| 18 | 045-052-039 | RR B6 10 | VOH |
| 19 | 045-053-005 | RR B6 10 | SR VOH |
| 20 | 045-053-007 | RR B6 10 | SR VOH |
| 21 | 045-053-009 | RR B6 10 | SR VOH |
| 22 | 045-053-012 | RR B6 10 | SR VOH |
| 23 | 045-053-013 | RR B6 10 | SR VOH |
| 24 | 045-053-014 | RR B6 10 | SR VOH |
| 25 | 045-053-022 | RR B6 10 | SR VOH |
| 26 | 045-053-024 | RR B6 10 | SR VOH |
| 27 | 045-053-025 | RR B6 10 | SR VOH |
| 28 | 045-053-031 | RR B6 10 | SR VOH |
| 29 | 045-053-032 | RR B6 10 | SR VOH |
| 30 | 045-053-033 | RR B6 10 | SR VOH |
| 31 | 045-053-034 | RR B6 10 | SR VOH |
| 32 | 045-053-035 | RR B6 10 | SR VOH |
| 33 | 045-054-001 | RR B6 10 | SR VOH |
| 34 | 045-054-005 | RR B6 10 | SR VOH |
| 35 | 045-054-009 | RR B6 10 | SR VOH |
| 36 | 045-054-010 | RR B6 10 | SR VOH |
| 37 | 045-054-012 | RR B6 10 | SR VOH |
| 38 | 045-054-013 | RR B6 10 | SR VOH |
| 39 | 045-054-014 | RR B6 10 | SR VOH |
| 40 | 045-054-021 | RR B6 10 | SR VOH |
| 41 | 045-054-024 | RR B6 10 | SR VOH |
| 42 | 045-054-025 | RR B6 10 | SR VOH |
| 43 | 045-054-026 | RR B6 10 | SR VOH |
| 44 | 045-054-027 | RR B6 10 | SR VOH |

TABLE 1
LAND USE ZONING COMBINING DISTRICTS – WILFRED AND STONY POINT SITES

| Map Id No. | APN | Primary Zone | Combining District(s) | | |
|------------|-------------|--------------|-----------------------|-----|----|
| 45 | 045-054-028 | RR B6 10 | SR | VOH | |
| 46 | 045-054-030 | RR B6 10 | SR | VOH | |
| 47 | 045-054-031 | RR B6 10 | SR | VOH | |
| 48 | 045-054-032 | RR B6 10 | SR | VOH | |
| 49 | 045-054-035 | RR B6 10 | SR | VOH | |
| 50 | 045-054-036 | RR B6 10 | SR | VOH | |
| 51 | 045-054-041 | RR B6 10 | SR | VOH | |
| 52 | 045-071-002 | LEA B6 60 | SR | VOH | |
| 53 | 045-071-003 | LEA B6 60 | SR | VOH | |
| 54 | 045-071-004 | LEA B6 60 | SR | VOH | F2 |
| 55 | 045-071-005 | LEA B6 60 | SR | VOH | F2 |
| 56 | 045-071-006 | LEA B6 60 | SR | VOH | F2 |
| 57 | 045-072-001 | DA B6 10 | SR | VOH | |
| 58 | 045-072-004 | DA B6 10 | SR | VOH | |
| 59 | 045-072-006 | DA B6 10 | SR | VOH | F2 |
| 60 | 045-072-007 | DA B6 10 | SR | VOH | |
| 61 | 045-072-008 | DA B6 10 | SR | VOH | |
| 62 | 045-072-009 | DA B6 10 | SR | VOH | |
| 63 | 045-072-010 | DA B6 10 | SR | VOH | |
| 64 | 045-072-011 | DA B6 10 | SR | VOH | |
| 65 | 045-072-012 | DA B6 10 | SR | VOH | |
| 66 | 045-072-013 | DA B6 10 | SR | VOH | |
| 67 | 045-072-014 | DA B6 10 | SR | VOH | |
| 68 | 045-072-015 | DA B6 10 | SR | VOH | |
| 69 | 045-073-001 | DA B6 10 | SR | VOH | |
| 70 | 045-073-002 | DA B6 10 | SR | VOH | |
| 71 | 045-073-003 | DA B6 10 | SR | VOH | |
| 72 | 045-073-004 | DA B6 10 | SR | VOH | |
| 73 | 045-074-001 | RR B6 10 | SR | VOH | |
| 74 | 045-074-002 | RR B6 10 | SR | VOH | |
| 75 | 045-074-003 | RR B6 10 | SR | VOH | |
| 76 | 045-074-004 | RR B6 10 | SR | VOH | |
| 77 | 045-074-006 | RR B6 10 | SR | VOH | |
| 78 | 045-074-007 | RR B6 10 | SR | VOH | |
| 79 | 045-074-009 | DA B6 10 | SR | VOH | |
| 80 | 045-074-010 | DA B6 10 | SR | VOH | |
| 81 | 045-074-011 | RR B6 10 | SR | VOH | |
| 82 | 045-074-012 | RR B6 10 | SR | VOH | |
| 83 | 045-074-014 | DA B6 10 | SR | VOH | |
| 84 | 045-074-015 | DA B6 10 | SR | VOH | |
| 85 | 045-074-016 | DA B6 10 | SR | VOH | |
| 86 | 045-310-009 | RR B6 10 | SR | VOH | |
| 87 | 045-310-010 | RR B6 10 | SR | VOH | |
| 88 | 045-310-011 | RR B6 10 | SR | VOH | |

TABLE 1
LAND USE ZONING COMBINING DISTRICTS – WILFRED AND STONY POINT SITES

| Map Id No. | APN | Primary Zone | Combining District(s) | | | | | | |
|---------------|--------------------|-----------------|-----------------------|-----|----|----|----|---|--|
| 89 | 045-310-012 | RR B6 10 | SR | VOH | | | | | |
| 90 | 045-310-013 | RR B6 10 | SR | VOH | | | | | |
| 91 | 045-310-014 | RR B6 10 | SR | VOH | | | | | |
| 92 | 045-310-015 | RR B6 10 | SR | VOH | | | | | |
| 93 | 045-310-ROW | | | | | | | | |
| 94 | 046-011-013 | LEA B6 60 | SR | VOH | F1 | F2 | BR | Z | |
| 95 | 046-011-029 | DA B6 10 | SR | VOH | | | | | |
| 96 | 046-011-030 | DA B6 10 | SR | VOH | | | | | |
| 97 | 046-011-031 | DA B6 10 | SR | VOH | | | | | |
| 98 | 046-011-032 | DA B6 10 | SR | VOH | | | | | |
| 99 | 046-011-033 | DA B6 10 | SR | VOH | | | | | |
| 100 | 046-011-034 | DA B6 10 | SR | VOH | | | | | |
| 101 | 046-011-035 | DA B6 10 | SR | VOH | F1 | F2 | BR | Z | |
| 102 | 046-011-036 | LEA B6 60 | SR | VOH | F1 | F2 | | | |
| 103 | 046-021-017 | LEA B6 60 | SR | VOH | F2 | BR | | | |
| 104 | 046-021-020 | LEA B6 60 | SR | VOH | F2 | Z | | | |
| 105 | 046-021-021 | LEA B6 60 | SR | VOH | F2 | Z | | | |
| 106 | 046-021-024 | LEA B6 60 | SR | VOH | F2 | | | | |
| 107 | 046-021-025 | LEA B6 60 | SR | VOH | F2 | | | | |
| 108 | 046-021-026 | LEA B6 60 | SR | VOH | F2 | | | | |
| 109 | 046-021-027 | LEA B6 60 | SR | VOH | F2 | | | | |
| 110 | 046-021-028 | LEA B6 60 | SR | VOH | F2 | | | | |
| 111 | 046-021-029 | LEA B6 60 | SR | VOH | F2 | | | | |
| 112 | 046-021-030 | LEA B6 60 | SR | VOH | F2 | | | | |
| 113 | 046-021-031 | LEA B6 60 | SR | VOH | F2 | | | | |
| 114 | 046-021-032 | LEA B6 60 | SR | VOH | F2 | | | | |
| 115 | 046-021-033 | LEA B6 60 | SR | VOH | F2 | | | | |
| 116 | 046-021-034 | LEA B6 60 | SR | VOH | F2 | | | | |
| 117 | 046-021-035 | LEA B6 60 | SR | VOH | F2 | | | | |
| 118 | 046-021-036 | LEA B6 60 | SR | VOH | F2 | | | | |
| 119 | 046-021-037 | LEA B6 60 | SR | VOH | F2 | | | | |
| 120 | 046-021-038 | LEA B6 60 | SR | VOH | F2 | | | | |
| 121 | 046-021-039 | LEA B6 60 | SR | VOH | BR | F2 | | | |
| 122 | 046-021-040 | LEA B6 60 | SR | VOH | F2 | Z | | | |
| 123 | 046-031-021 | LEA B6 60 | SR | VOH | F1 | F2 | | Z | |
| 124 | 046-032-021 | AR B6 5 | | VOH | | | | | |
| 125 | 046-032-024 | LEA B6 60 | | VOH | Z | | | | |
| 126 | 046-032-026 | LEA B6 60 | SR | VOH | F2 | | | | |
| 127 | 046-032-028 | LEA B6 60 | SR | VOH | F2 | Z | | | |
| 128 | 046-032-029 | LEA B6 60 | SR | VOH | F2 | Z | | | |
| 129 | 046-032-031 | LEA B6 60 | SR | VOH | BR | F2 | | Z | |
| 130 | 046-032-033 | LEA B6 60 | SR | VOH | F2 | Z | | | |
| 131 | 046-032-034 | LEA B6 60 | SR | VOH | Z | | | | |
| 132 | 046-032-035 | LEA B6 60 | SR | VOH | F2 | Z | | | |

TABLE 1
LAND USE ZONING COMBINING DISTRICTS – WILFRED AND STONY POINT SITES

| Map Id No. | APN | Primary Zone | Combining District(s) | | | |
|------------|-------------|--------------|-----------------------|-----|----|---|
| 133 | 046-032-036 | LEA B6 60 | SR | VOH | F2 | Z |
| 134 | 046-071-003 | AR B6 5 | | VOH | F2 | |
| 135 | 046-071-006 | AR B6 5 | | VOH | F2 | |
| 136 | 046-071-011 | AR B6 5 | | VOH | F2 | |
| 137 | 046-071-012 | AR B6 5 | | VOH | F2 | |
| 138 | 046-071-014 | AR B6 5 | | VOH | F2 | |
| 139 | 046-071-015 | AR B6 5 | | VOH | F2 | |
| 140 | 046-071-016 | AR B6 5 | | VOH | F2 | |
| 141 | 046-072-002 | AR B6 5 | | VOH | F2 | |
| 142 | 046-072-004 | AR B6 5 | | VOH | F2 | |
| 143 | 046-072-009 | AR B6 5 | | VOH | F2 | |
| 144 | 046-072-017 | AR B6 5 | | VOH | F2 | |
| 145 | 046-072-021 | AR B6 5 | | VOH | F2 | |
| 146 | 046-072-022 | AR B6 5 | | VOH | F2 | |
| 147 | 046-072-023 | AR B6 5 | | VOH | F2 | |
| 148 | 046-072-024 | AR B6 5 | | VOH | F2 | |
| 149 | 134-253-007 | AR B6 5 | | VOH | J | |
| 150 | 134-253-018 | AR B6 5 | | VOH | J | |
| 151 | 134-253-019 | AR B6 5 | | VOH | J | |
| 152 | 134-253-023 | AR B6 5 | | VOH | J | |
| 153 | 134-253-024 | AR B6 5 | | VOH | J | |
| 154 | 134-253-025 | AR B6 5 | | VOH | J | |
| 155 | 134-253-026 | AR B6 5 | | VOH | J | |
| 156 | 134-253-027 | AR B6 5 | | VOH | J | |
| 157 | 134-253-028 | AR B6 5 | | VOH | J | |
| 158 | 134-253-029 | AR B6 5 | | VOH | J | |
| 159 | 134-253-030 | AR B6 5 | | VOH | J | |
| 160 | 134-253-031 | AR B6 5 | | VOH | J | |
| 161 | 134-253-032 | AR B6 5 | | VOH | J | |
| 162 | 134-253-033 | AR B6 5 | | VOH | J | |
| 163 | 134-253-034 | AR B6 5 | | VOH | J | |
| 164 | 134-256-003 | DA B6 10 | SR | VOH | | |
| 165 | 134-256-004 | DA B6 10 | SR | VOH | | |
| 166 | 134-256-005 | DA B6 10 | SR | VOH | | |
| 167 | 134-256-006 | DA B6 10 | SR | VOH | | |
| 168 | 134-261-003 | LEA B6 60 | SR | VOH | F2 | |
| 169 | 134-262-002 | RR B6 5 | | VOH | J | |
| 170 | 134-262-003 | RR B6 5 | | VOH | | |
| 171 | 134-262-013 | RR B6 5 | | VOH | | |
| 172 | 134-262-020 | RR B6 5 | | VOH | | |
| 173 | 134-262-022 | RR B6 5 | | VOH | | |
| 174 | 134-262-024 | RR B6 5 | | VOH | J | |
| 175 | 134-262-025 | RR B6 5 | | VOH | J | |
| 176 | 134-262-026 | RR B6 5 | | VOH | J | |

TABLE 1
LAND USE ZONING COMBINING DISTRICTS – WILFRED AND STONY POINT SITES

| Map Id No. | APN | Primary Zone | Combining District(s) | | |
|------------|--------------------|--------------|-----------------------|-----|----|
| 177 | 134-262-029 | RR B6 5 | VOH | J | |
| 178 | 134-262-030 | RR B6 5 | VOH | | |
| 179 | 134-262-031 | RRB6 5 | VOH | | |
| 180 | 134-262-032 | RR B6 5 | VOH | J | |
| 181 | <i>134-264-003</i> | LEA B6 60 | SR | VOH | F2 |
| 182 | 134-264-004 | LEA B6 60 | SR | VOH | F2 |
| 183 | <i>134-264-005</i> | LEA B6 60 | SR | VOH | F2 |
| 184 | <i>134-264-006</i> | LEA B6 60 | SR | VOH | F2 |
| 185 | <i>134-264-007</i> | LEA B6 60 | SR | VOH | |
| 186 | <i>134-264-008</i> | LEA B6 60 | SR | VOH | F2 |
| 187 | 134-265-003 | RR B6 5 | VOH | | |
| 188 | 134-265-004 | RR B6 5 | VOH | | |
| 189 | 134-265-007 | RR B6 5 | VOH | | |
| 190 | 134-265-009 | RR B6 5 | VOH | | |
| 191 | 134-265-012 | LEA B6 60 | VOH | | |
| 192 | 134-265-014 | LEA B6 60 | VOH | | |
| 193 | 134-265-015 | RR B6 5 | VOH | | |
| 194 | 134-265-016 | RR B6 5 | VOH | | |
| 195 | 134-265-017 | LEA B6 60 | VOH | | |
| 196 | 134-265-018 | LEA B6 60 | VOH | | |
| 197 | 134-265-019 | LEA B6 60 | VOH | | |
| 198 | 134-265-020 | LEA B6 60 | VOH | | |
| 199 | 134-265-021 | RR B6 5 | VOH | | |
| 200 | 134-265-022 | RR B6 5 | VOH | | |
| 201 | <i>134-267-001</i> | LEA B6 60 | SR | VOH | F2 |
| 202 | <i>134-267-004</i> | LEA B6 60 | SR | VOH | F2 |
| 203 | <i>134-267-005</i> | LEA B6 60 | SR | VOH | F2 |
| 204 | <i>134-267-006</i> | LEA B6 60 | SR | VOH | F2 |
| 205 | 134-268-003 | RR B6 5 | VOH | | |
| 206 | 134-268-005 | RR B6 5 | VOH | | |
| 207 | 134-268-006 | RR B6 5 | VOH | | |
| 208 | 134-268-008 | RR B6 5 | VOH | | |
| 209 | 444-444-H2O | | | | |
| 210 | 999-999-ROW | | | | |

Source: Sonoma County Resource and Permit Branch, 2007; AES, 2007

Notes: APN= Assessor Parcel Number, bold APN denote parcels in the Wilfred site, italics denote parcels in the Stony Point site, RR= Rural Residential District, DA= Diverse Agriculture District, LEA= Land Extensive Agriculture District, AR= Agriculture and Residential District, B6= B Combining District 6, SR= Scenic Resources Combining District, F1= Floodway Combining District, F2= Floodplain Combining District, Z= Second Unit Exclusion Combining District, J= Manufactured Home Exclusion Combining District, VOH= Valley Oak Habitat Combining District

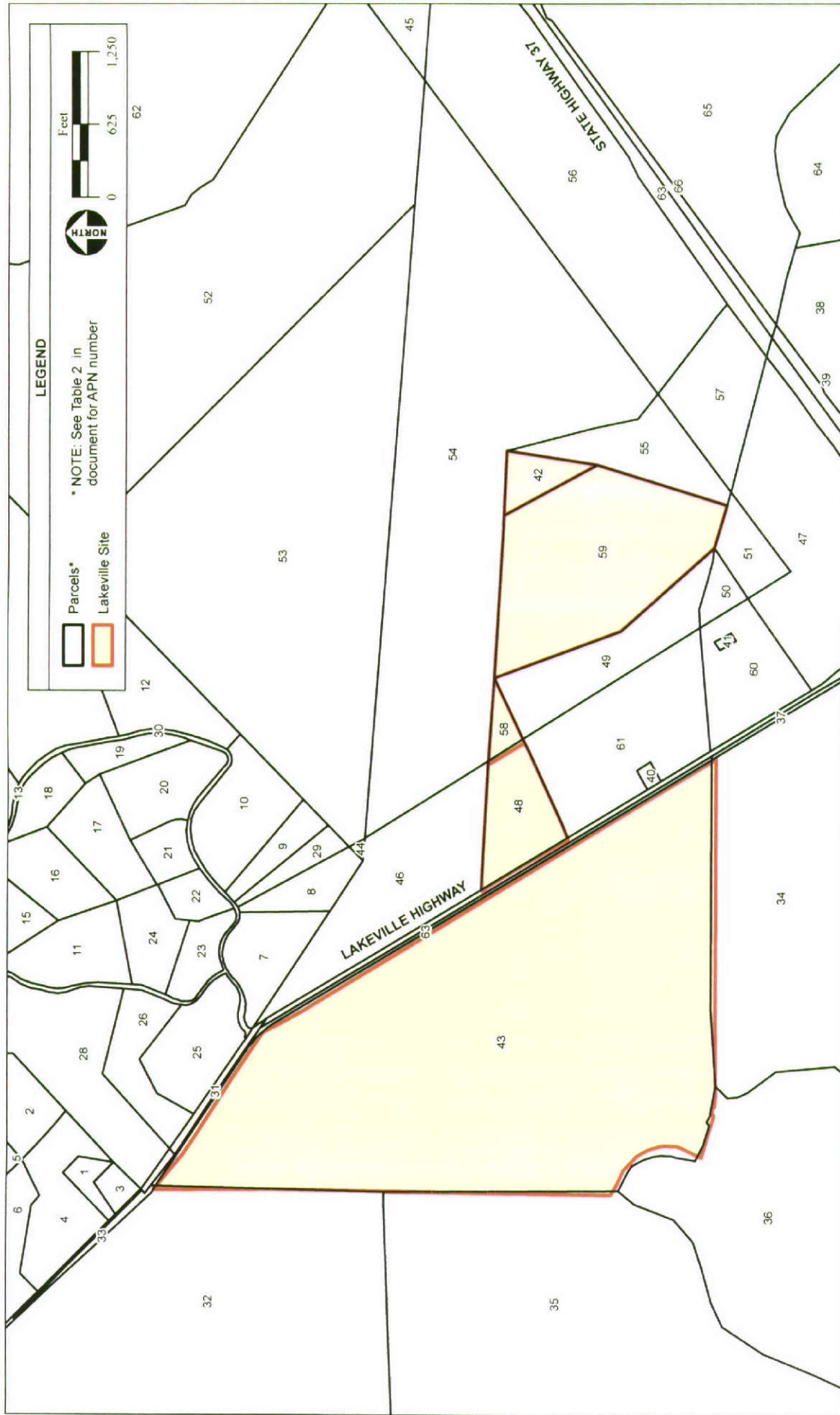


TABLE 2
LAND USE ZONING COMBINING DISTRICTS – LAKEVILLE SITE

| Map Id. No. | APN | Primary Zone | Combining Districts | | | |
|-------------|--------------------|------------------------|---------------------|-----|----|---|
| 1 | 068-100-003 | DA B6 20/2 | SR | VOH | | |
| 2 | 068-100-015 | DA B6 20/2 | SR | | | |
| 3 | 068-100-025 | DA B6 20/2 | SR | VOH | | |
| 4 | 068-100-026 | DA B6 20/2 | SR | VOH | | |
| 5 | 068-100-028 | DA B6 20/20, LEA B6 60 | SR | | | |
| 6 | 068-100-031 | DA B6 20/20 | SR | VOH | Z | |
| 7 | 068-100-037 | DA B7 | SR | | | |
| 8 | 068-100-038 | DA B7 | SR | | | |
| 9 | 068-100-039 | DA B7 | SR | | | |
| 10 | 068-100-040 | DA B7 | SR | | | |
| 11 | 068-100-041 | DA B7 | SR | | | |
| 12 | 068-100-042 | DA B7, LEA B7 | SR | | | |
| 13 | 068-100-043 | LEA B7 | SR | | | |
| 14 | 068-100-044 | LEA B7 | SR | | | |
| 15 | 068-100-045 | DA B7, LEA B7 | SR | | | |
| 16 | 068-100-046 | DA B7, LEA B7 | SR | | | |
| 17 | 068-100-047 | DA B7 | SR | | | |
| 18 | 068-100-048 | DA B7, LEA B7 | SR | | | |
| 19 | 068-100-049 | DA B7, LEA B7 | SR | | | |
| 20 | 068-100-050 | DA B7 | SR | | | |
| 21 | 068-100-051 | DA B7 | SR | | | |
| 22 | 068-100-052 | DA B7 | SR | | | |
| 23 | 068-100-053 | DA B7 | SR | | | |
| 24 | 068-100-054 | DA B7 | SR | | | |
| 25 | 068-100-055 | DA B7 | SR | | | |
| 26 | 068-100-056 | DA B7 | SR | | | |
| 27 | 068-100-057 | LEA B7 | SR | VOH | | |
| 28 | 068-100-058 | DA B7, LEA B7 | SR | | | |
| 29 | 068-100-060 | DA B7 | SR | | | |
| 30 | 068-100-061 | ROAD | SR | | | |
| 31 | 068-100-ROW | | | | | |
| 32 | 068-120-010 | LEA B6 60, LEA B6 20 | SR | VOH | F2 | |
| 33 | 068-120-ROW | | | | | |
| 34 | 068-130-009 | LEA B6 100 | SR | F2 | | |
| 35 | 068-130-010 | LEA B6 100 | F2 | Z | | |
| 36 | 068-130-013 | LEA B6 100 | SR | BR | F2 | Z |
| 37 | 068-130-ROW | | | | | |
| 38 | 068-140-018 | LEA B6 100 | SR | F2 | | |
| 39 | 068-140-ROW | | | | | |
| 40 | 068-150-003 | LEA B6 60 | SR | | | |
| 41 | 068-150-004 | LEA B6 100 | SR | F2 | | |
| 42 | 068-150-006 | LEA B6 60 | SR | | | |
| 43 | 068-150-010 | LEA B6 60 | SR | VOH | F2 | |
| 44 | 068-150-011 | LEA B6 60 | SR | | | |
| 45 | 068-150-012 | LEA B6 60 | SR | | | |
| 46 | 068-150-014 | LEA B6 60 | SR | | | |
| 47 | 068-150-025 | LEA B6 60 | SR | F2 | | |
| 48 | 068-150-027 | LEA B6 60 | SR | | | |
| 49 | 068-150-028 | LEA B6 60 | SR | F2 | | |
| 50 | 068-150-030 | LEA B6 100 | SR | F2 | | |
| 51 | 068-150-031 | LEA B6 100 | SR | F2 | | |
| 52 | 068-150-033 | LEA B6 60 | SR | VOH | | |

TABLE 2
LAND USE ZONING COMBINING DISTRICTS – LAKEVILLE SITE

| Map Id. No. | APN | Primary Zone | Combining Districts |
|-------------|--------------------|--------------|---------------------|
| 53 | 068-150-034 | LEA B6 60 | SR VOH |
| 54 | 068-150-035 | LEA B6 60 | SR VOH |
| 55 | 068-150-036 | LEA B6 60 | SR VOH |
| 56 | 068-150-037 | LEA B6 60 | SR F2 |
| 57 | 068-150-038 | LEA B6 60 | SR VOH F2 |
| 58 | 068-150-039 | LEA B6 60 | SR |
| 59 | 068-150-040 | LEA B6 60 | SR VOH |
| 60 | 068-150-047 | LEA B6 100 | SR F2 |
| 61 | 068-150-048 | LEA B6 60 | SR F2 |
| 62 | 068-150-056 | K | SR VOH |
| 63 | 068-150-ROW | | |
| 64 | 068-160-003 | LEA B6 100 | SR F2 |
| 65 | 068-160-006 | LEA B6 100 | SR VOH F2 |
| 66 | 068-160-ROW | | |

Source: Sonoma County Resource and Permit Branch, 2007; AES, 2007.

Notes: APN= Assessor Parcel Number, bold APN denote parcels in the Lakeville site
 DA= Diverse Agriculture, LEA= Land Extensive Agriculture District, B6= B Combining District 6,
 SR= Scenic Resources Combining District, F2= Floodplain Combining District, Z= Second Unit
 Exclusion Combining District, VOH= Valley Oak Habitat Combining District, BR= Biotic Resource
 Combining District, K= Recreation and Visitor- Serving Commercial District