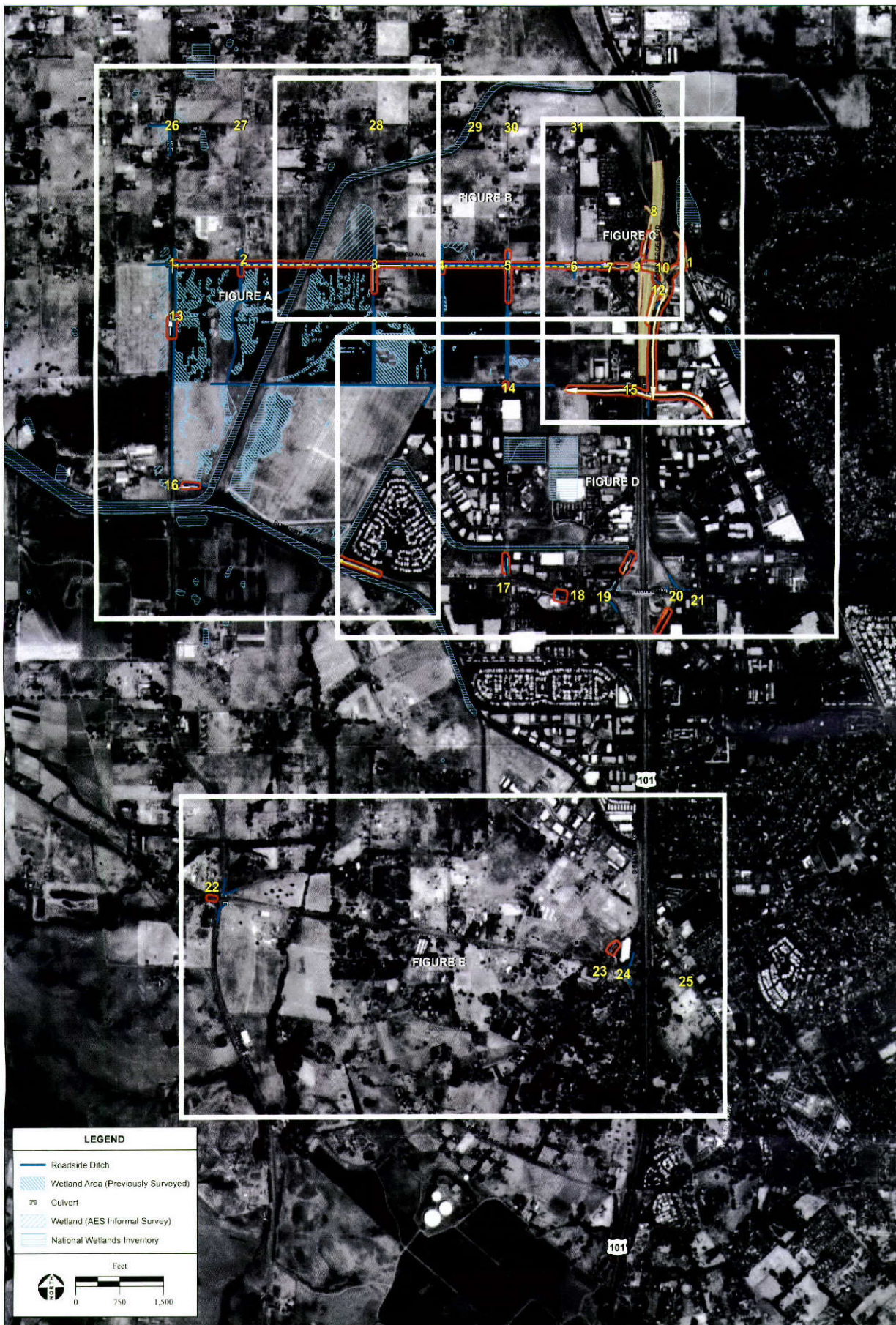


APPENDIX HH

*Traffic Mitigation/Indirect Impacts to Waters of the U.S. Maps
and Photographs*

*Traffic Mitigation/Indirect Impacts to Waters of the U.S. –
Wilfred/Stony Point Site Maps*



LEGEND

- Roadside Ditch
- Wetland Area (Previously Surveyed)
- Culvert
- Wetland (AES Informal Survey)
- National Wetlands Inventory

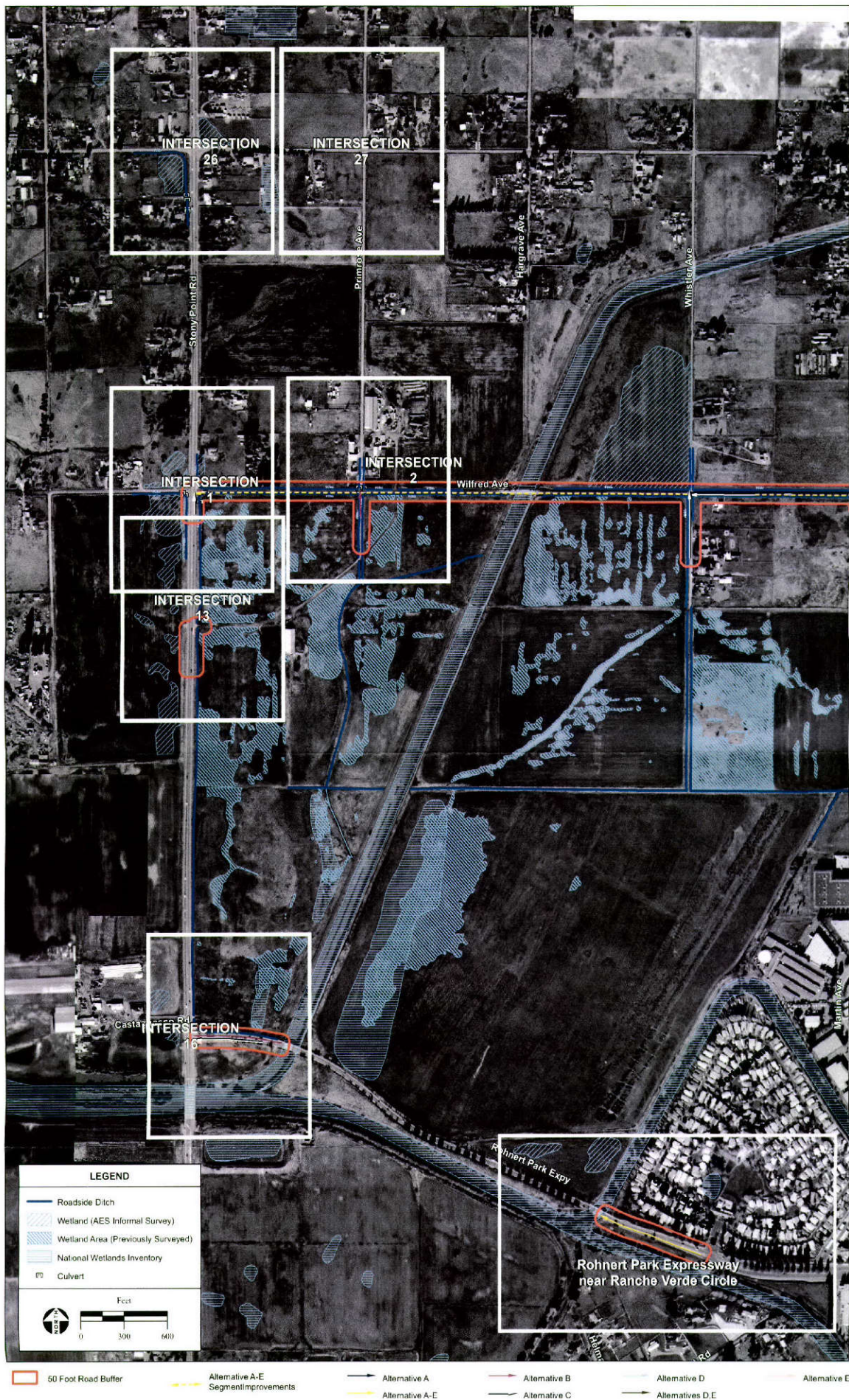
Feet

0 750 1,500

- | | | | | | |
|--------------------|--------------------------------------|------------------|--------------------|----------------------|---------------------------------------|
| Alternatives A,H | Alternatives A,C,D,H | Alternative A,C | Alternative B | Alternatives B-E | Alternative E |
| Alternatives A,C,H | Alternative A-E Segment Improvements | Alternatives A,D | Alternatives B,C | Alternative C | Caltrans US-101 Improvement Footprint |
| Alternatives B,D,E | Alternative A | Alternative A-D | Alternatives B,C,D | Alternative D | 50 Foot Road Buffer |
| Alternative H | Alternative A-E | Alternatives B-D | Alternatives D,E | Intersection Numbers | |

SOURCE: Google Earth Aerials, 2005; Huffman Broadway, 2006; U.S. Dept. of the Interior Fish and Wildlife Service Office of Biological Services, 1973; AES 2007

Graton Rancheria Casino and Hotel EIS / 203523



-  50 Foot Road Buffer
-  Caltrans US-101 Improvement Footprint
-  Alternatives A-H
Segment/Improvements
-  Alternative A
-  Alternative A.C
-  Alternatives A.D
-  Alternative A.E
-  Alternative B
-  Alternatives B.C
-  Alternatives B.C.D
-  Alternatives B-D
-  Alternative C
-  Alternatives B-E
-  Alternative D
- Alternatives D.E
- Alternative E

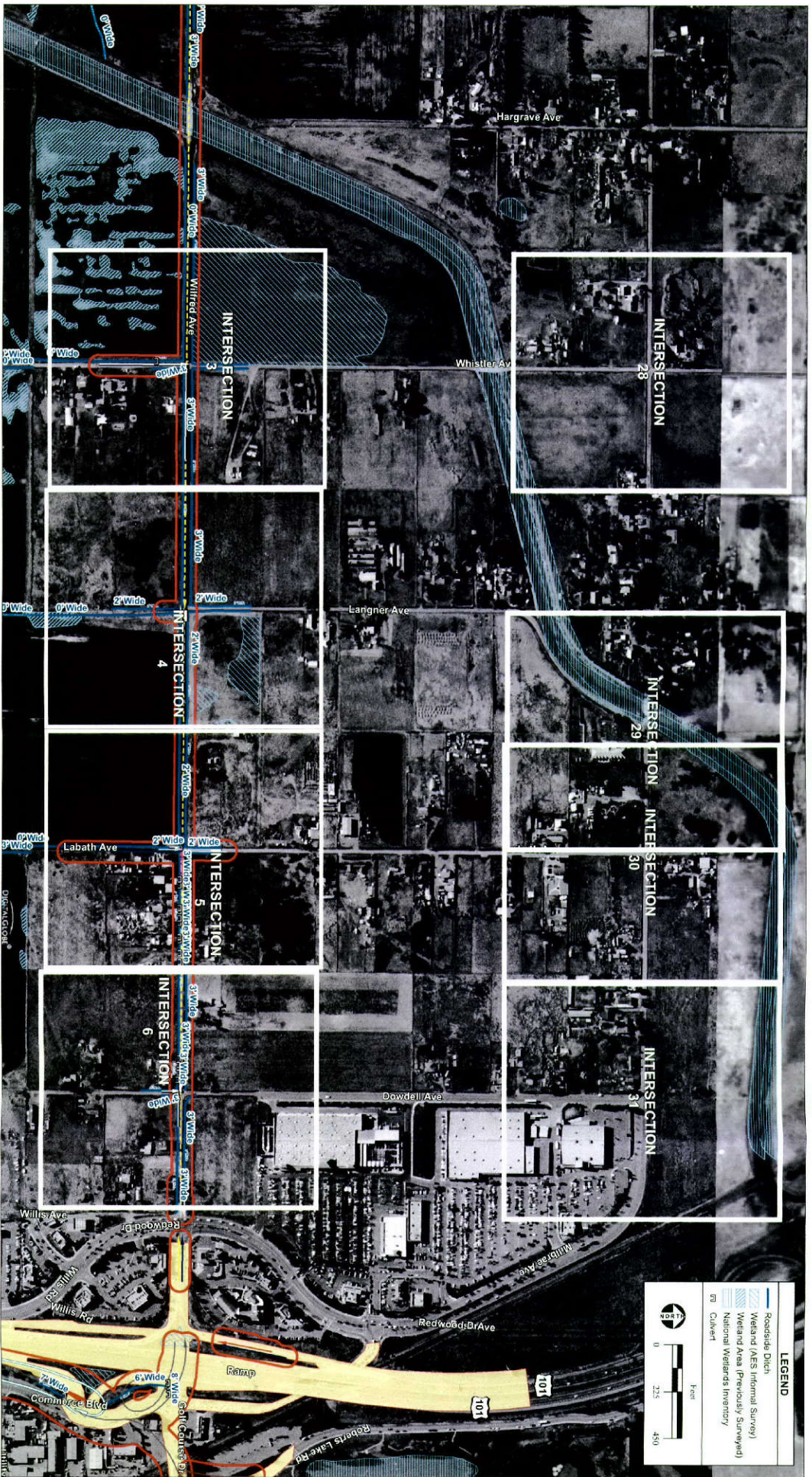
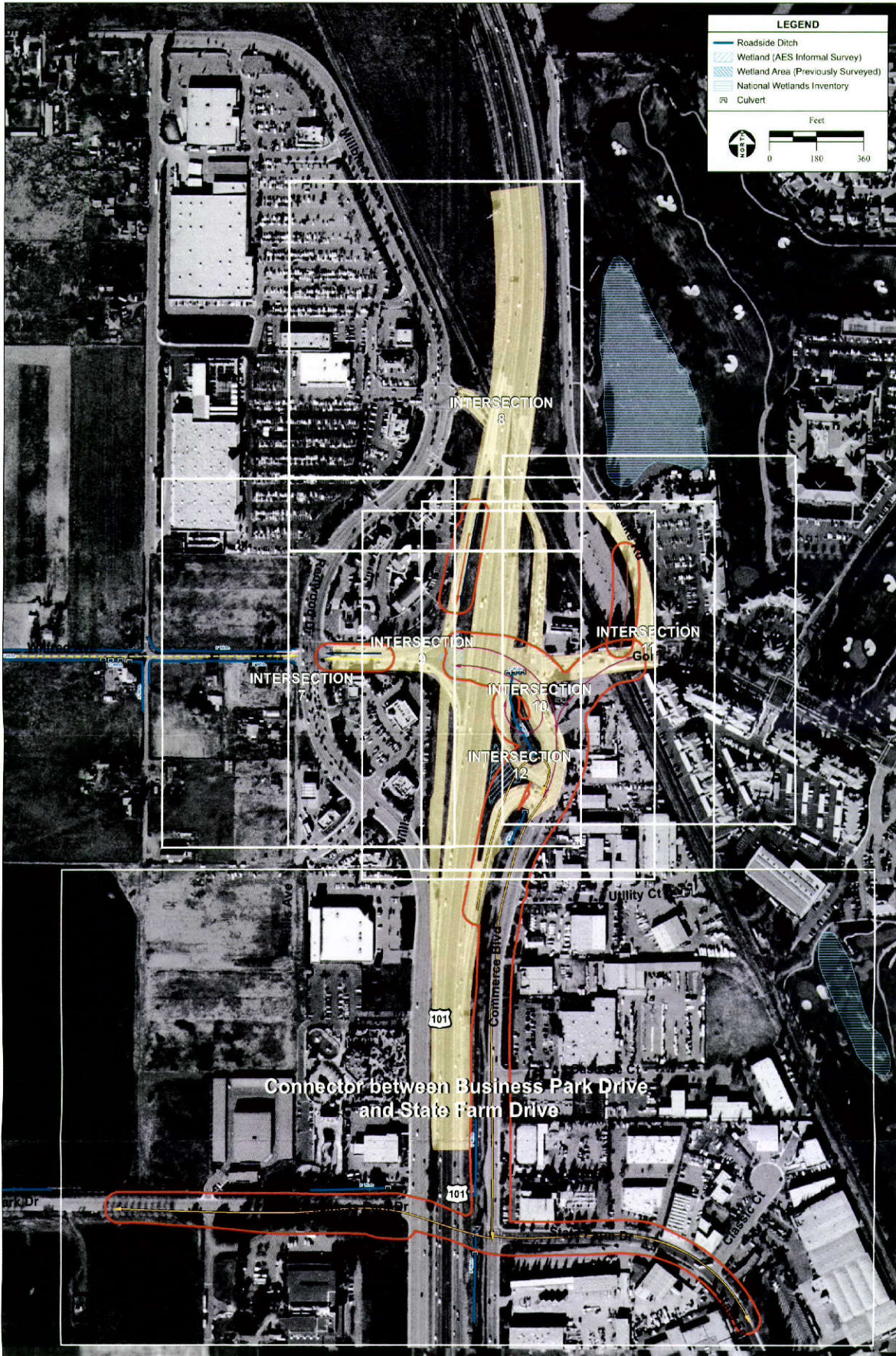
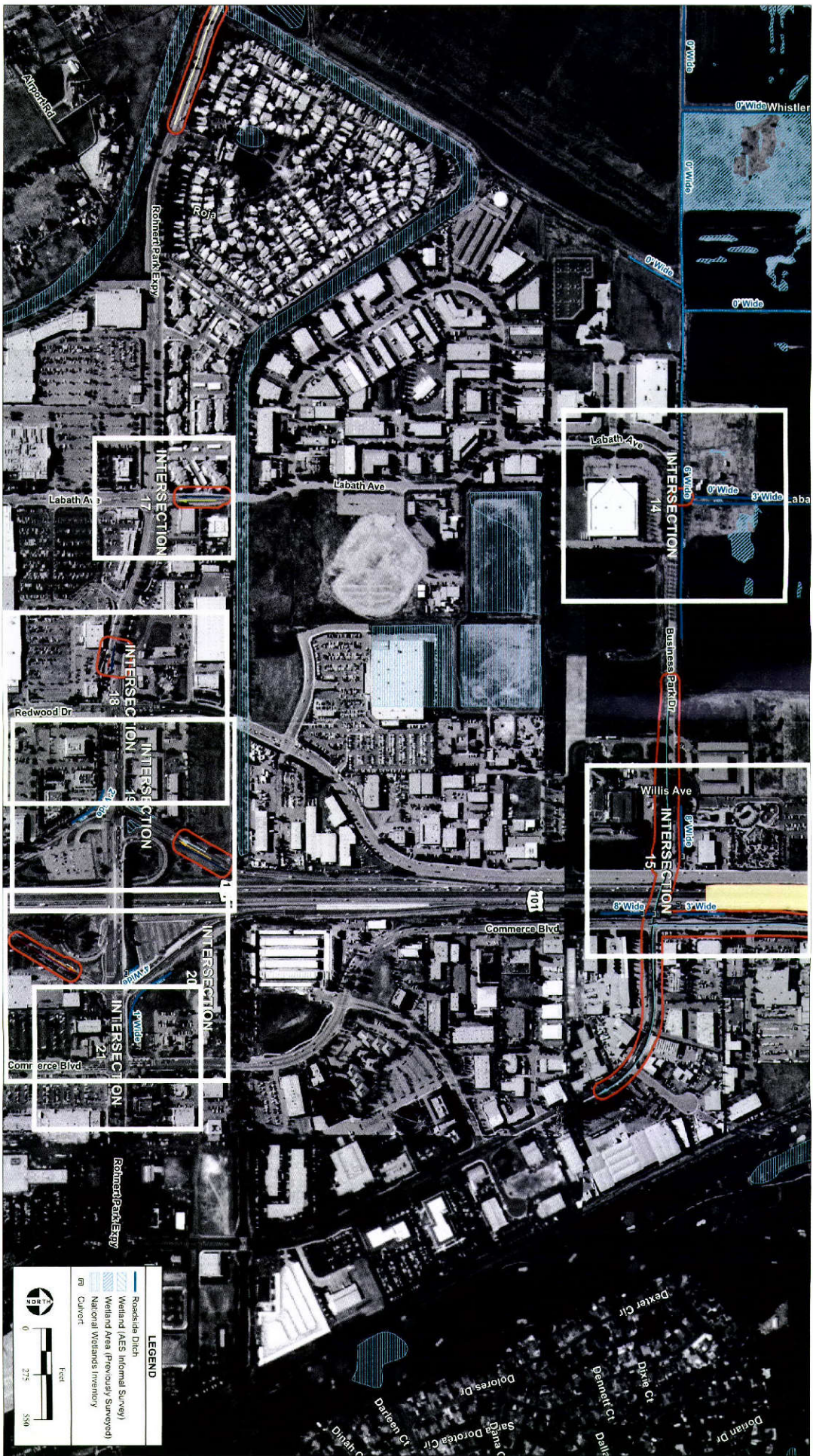


Figure B
Intersections 3 through 6 and 28 through 31 - Wilfred/Stony Point Sites



SOURCE: Google Earth Aerials, 2005; Airphoto USA, 11/1/2005; Huffman Broadway, 2006; U.S. Dept. of the Interior Fish and Wildlife Service Office of Biological Services, 1973; AES 2007

Figure C
Intersections 7 through 12 - Wilfred/Stony Point Site



- 50 Foot Road Buffer
- Alternative A
- Alternatives A.D
- Alternatives A.II
- Alternative A.E
- Alternative B
- Alternatives B.C
- Alternatives B.D
- Alternative C
- Alternative D
- Alternative E
- Alternative H

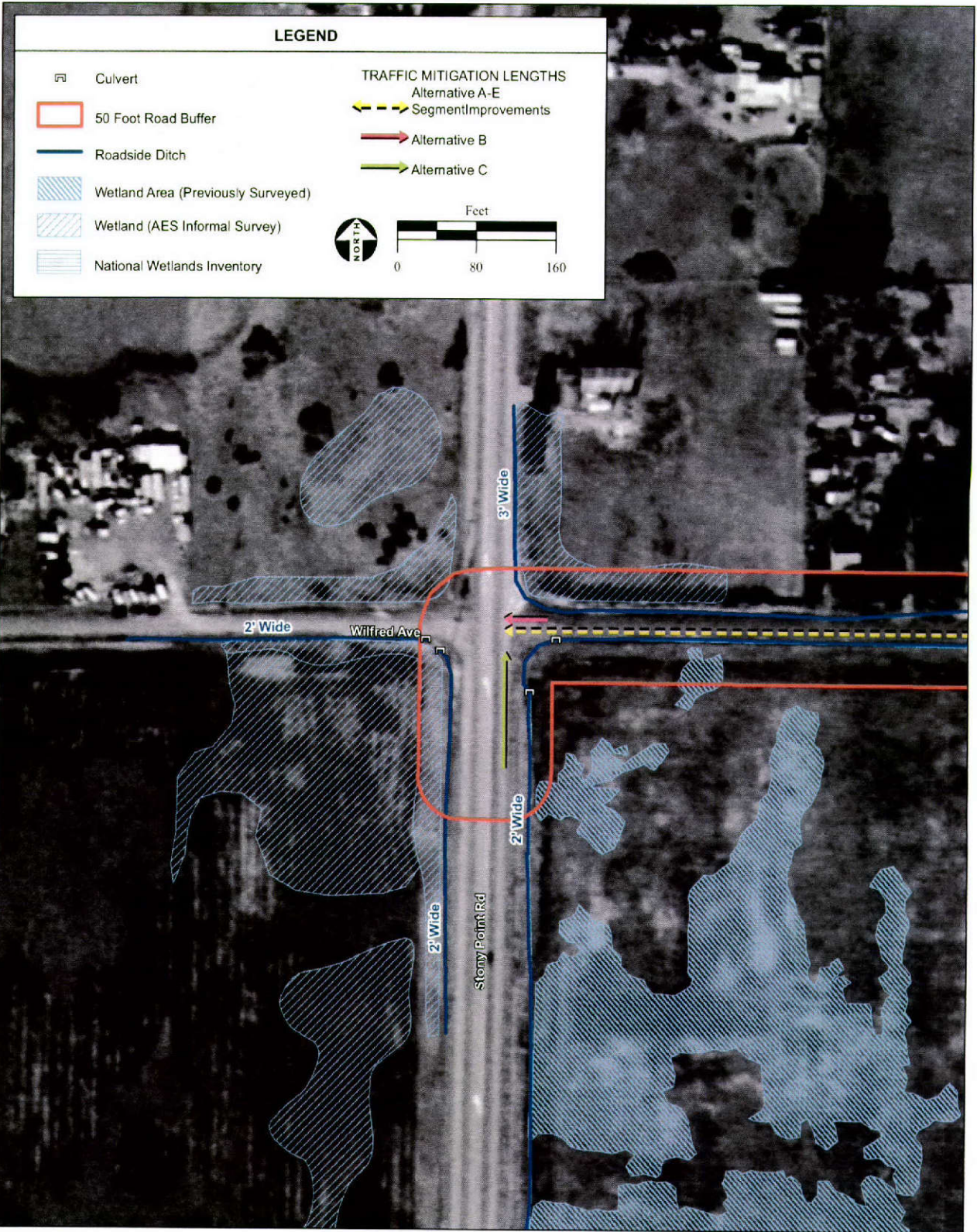
SOURCE: Appendix SA, I.II.10E, AES, 2007

Figure D
 Intersections 14, 15 and 17 through 21 - Wilfred / Stony Point Sites

Graton Rancheria Casino and Hotel EIS / 203523



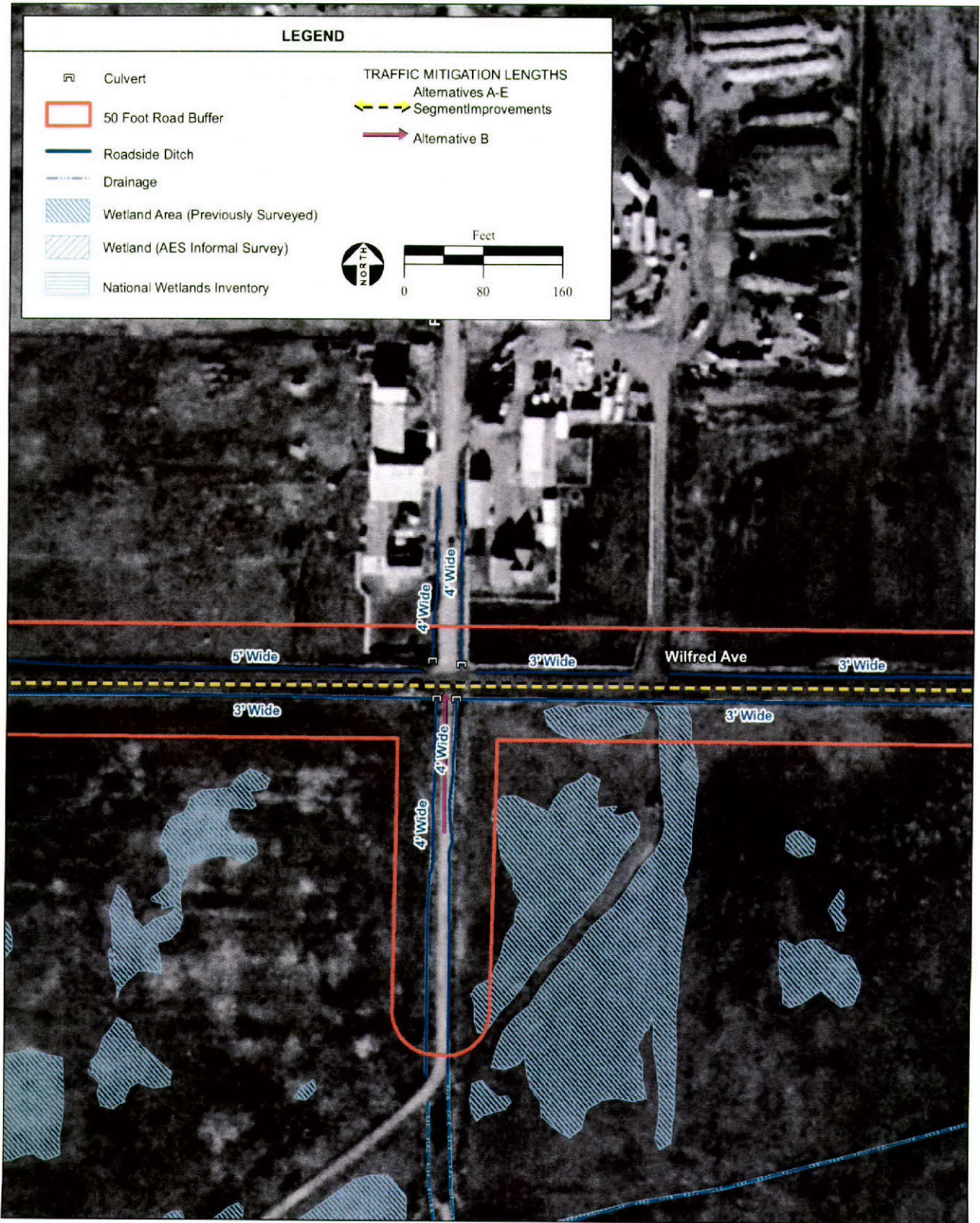
Figure E Intersections 22 through 25- Wilfred / Stony Point Sites



SOURCE: DigitalGlobe aerial photograph, 6/11/04; U.S. Dept. of the Interior Fish and Wildlife Service Office of Biological Services, 1973; AES 2007

Graton Rancheria Casino and Hotel EIS / 203523 ■

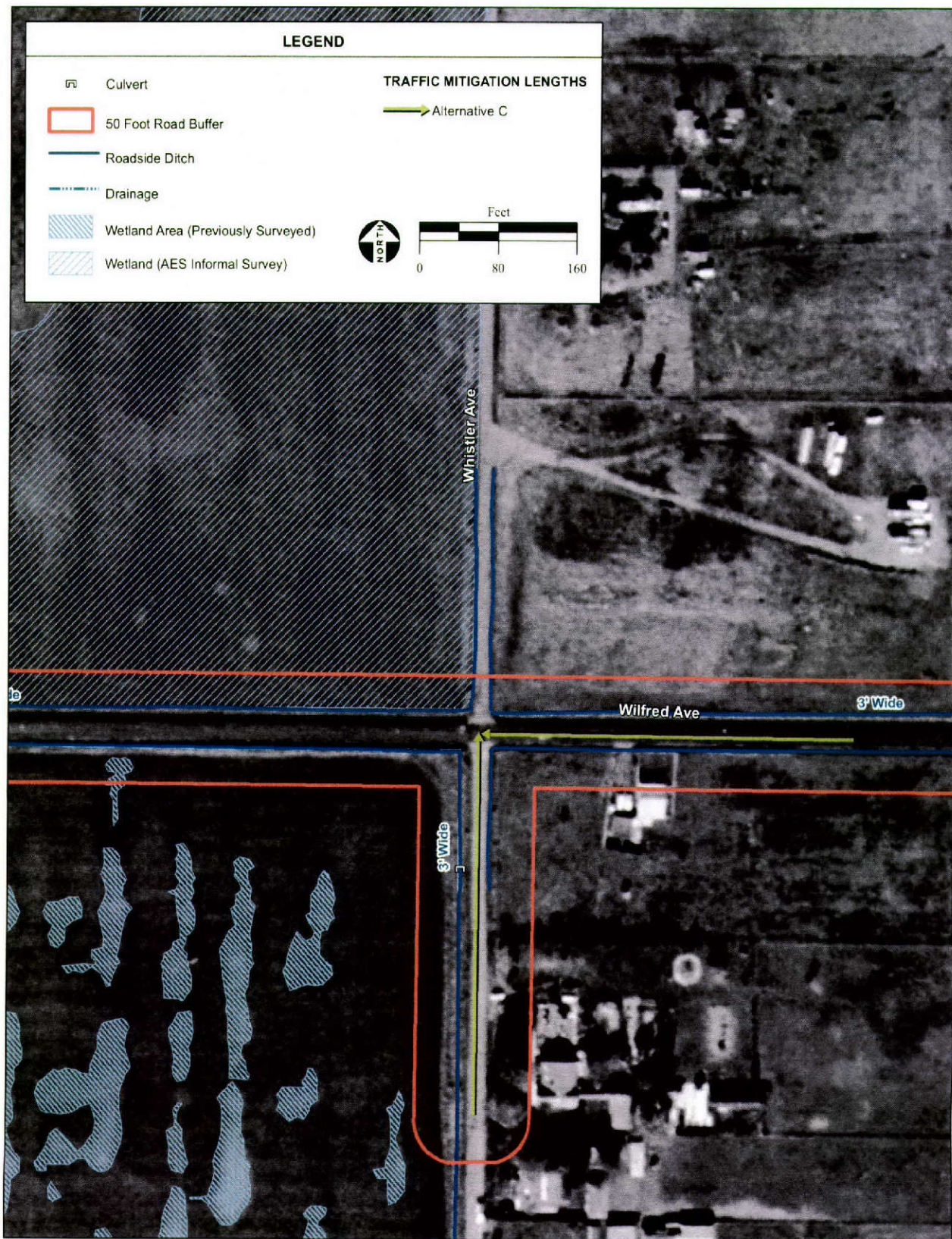
Closeup-View of Intersection 1 - Alternatives A-E and H



SOURCE: DigitalGlobe aerial photograph, 6/11/04; U.S. Dept. of the Interior Fish and Wildlife Service Office of Biological Services, 1973; AES 2007

Graton Rancheria Casino and Hotel EIS / 203523 ■

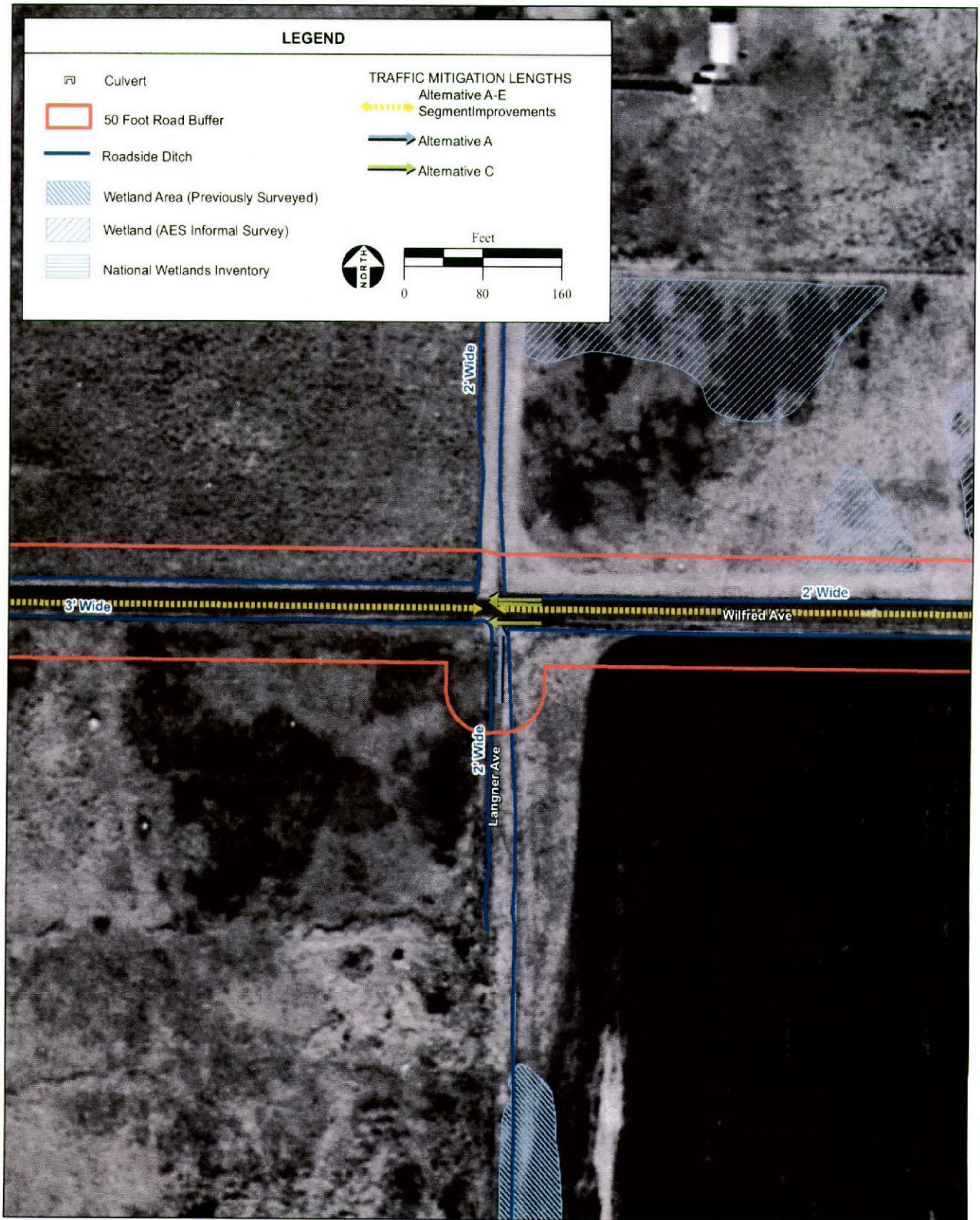
Closeup View of Intersection 2 - Alternatives A-E and H



SOURCE: LandVoyage aerial photograph, 11/1/05; U.S. Dept. of the Interior Fish and Wildlife Service Office of Biological Services, 1973; AES 2007

Graton Rancheria Casino and Hotel EIS / 203523 ■

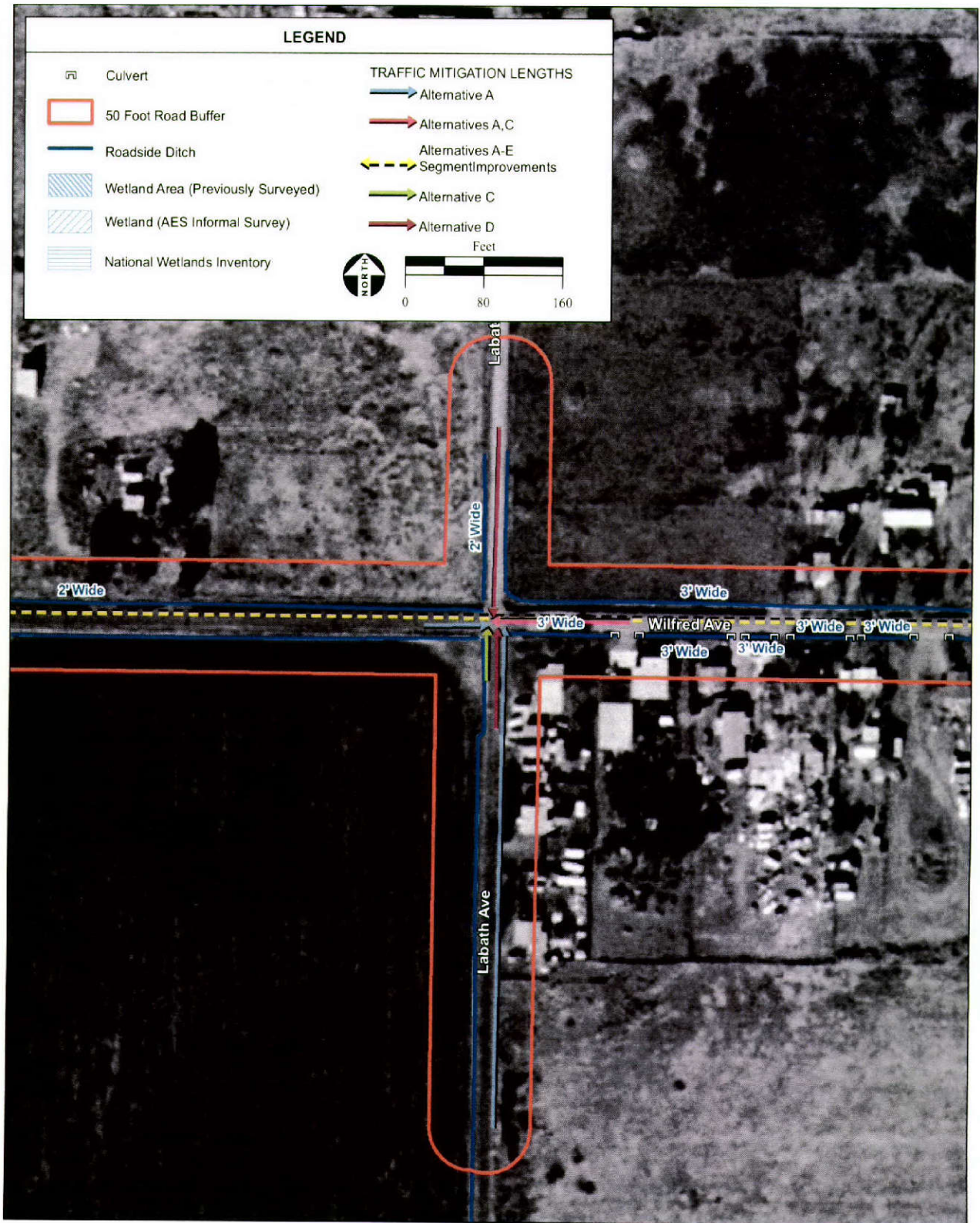
Closeup-View of Intersection 3 - Alternative A-E and H



SOURCE: DigitalGlobe aerial photograph, 6/11/04; U.S. Dept. of the Interior Fish and Wildlife Service Office of Biological Services, 1973; AES 2007

Graton Rancheria Casino and Hotel EIS / 203523 ■

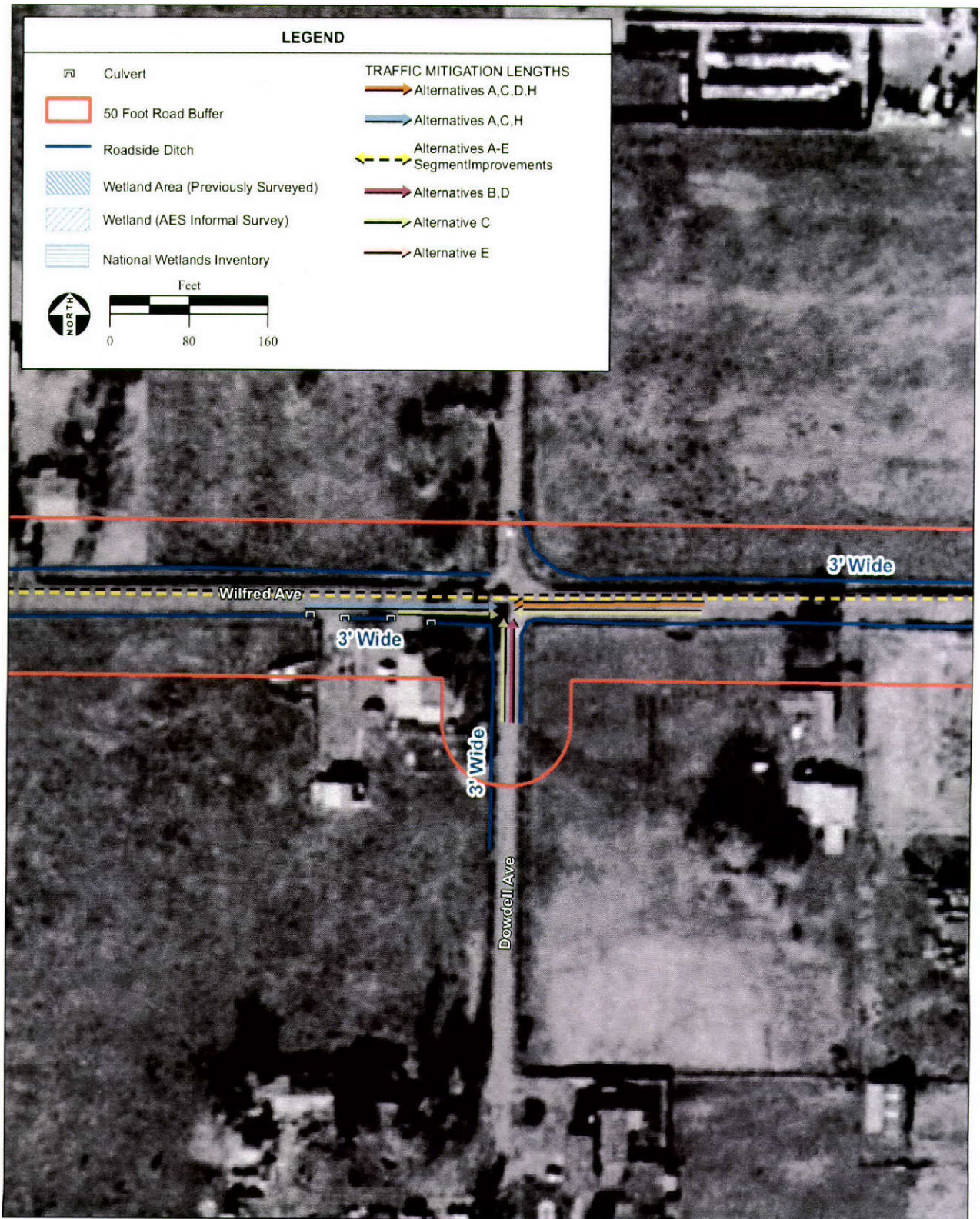
Closeup-View of Intersection 4 - Alternatives A-E and H



SOURCE: DigitalGlobe aerial photograph, 6/11/04; U.S. Dept. of the Interior Fish and Wildlife Service Office of Biological Services, 1973; AES 2007

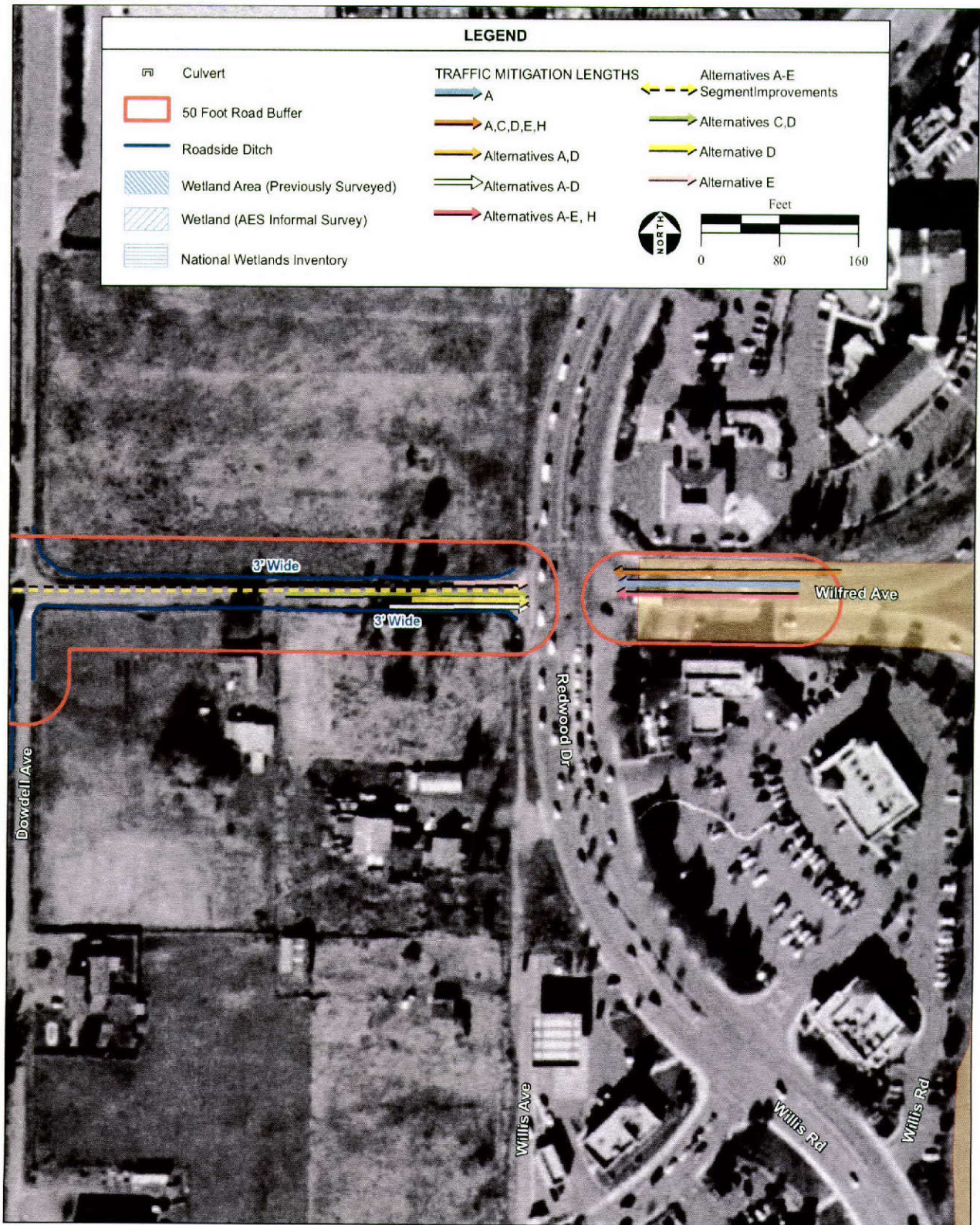
Graton Rancheria Casino and Hotel EIS / 203523 ■

Closeup-View of Intersection 5 - Alternatives A-E and H



SOURCE: DigitalGlobe aerial photograph, 6/11/04; U.S. Dept. of the Interior Fish and Wildlife Service Office of Biological Services, 1973; AES 2007

Closeup-View of Intersection 6 - Alternatives A-E and H



SOURCE: DigitalGlobe aerial photograph, 6/11/04; U.S. Dept. of the Interior Fish and Wildlife Service Office of Biological Services, 1973; AES 2007

Graton Rancheria Casino and Hotel EIS / 203523 ■

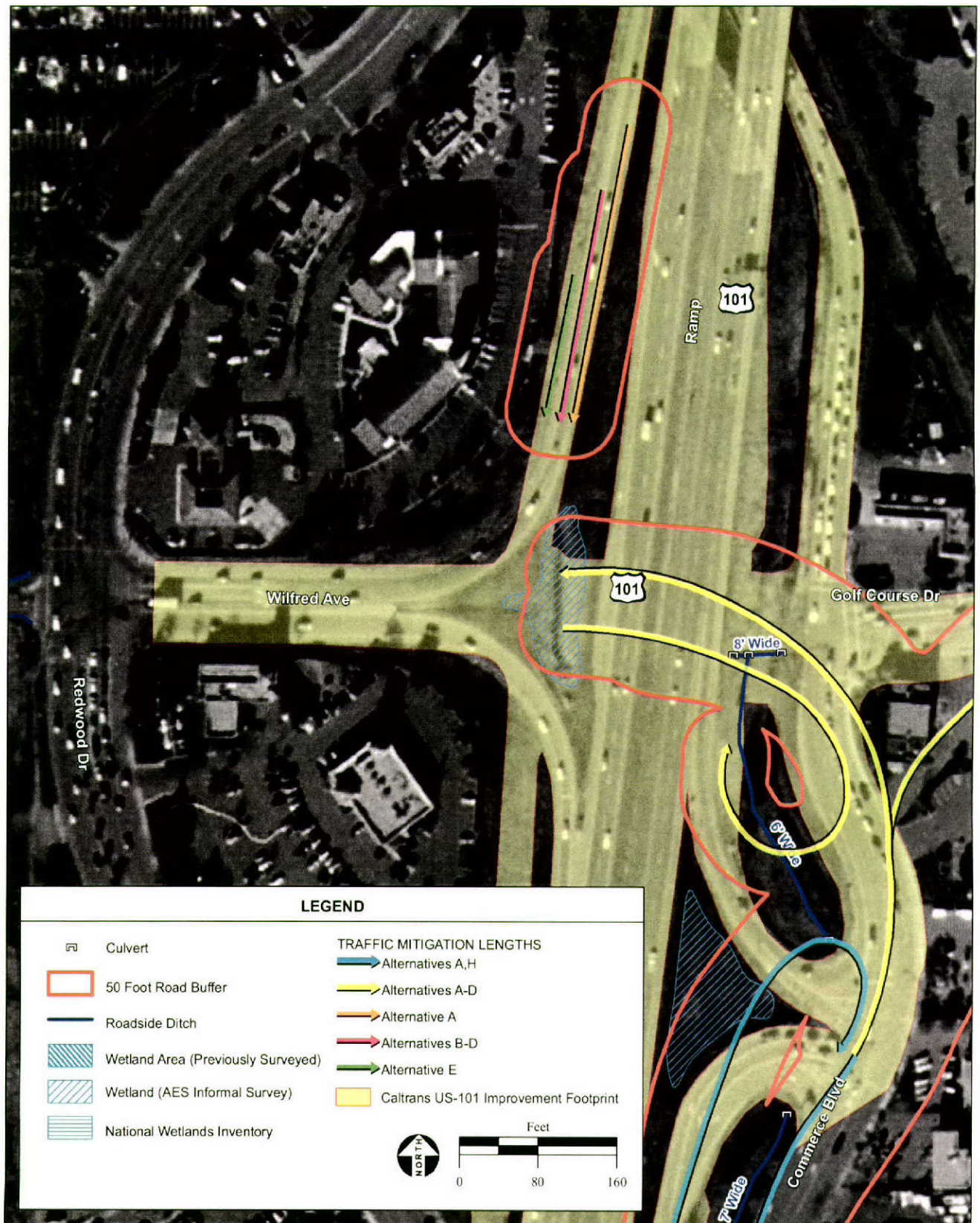
Closeup-View of Intersection 7 - Alternatives A-E and H



SOURCE: DigitalGlobe aerial photograph, 6/11/04; U.S. Dept. of the Interior Fish and Wildlife Service Office of Biological Services, 1973; AES 2007

Graton Rancheria Casino and Hotel EIS / 203523 ■

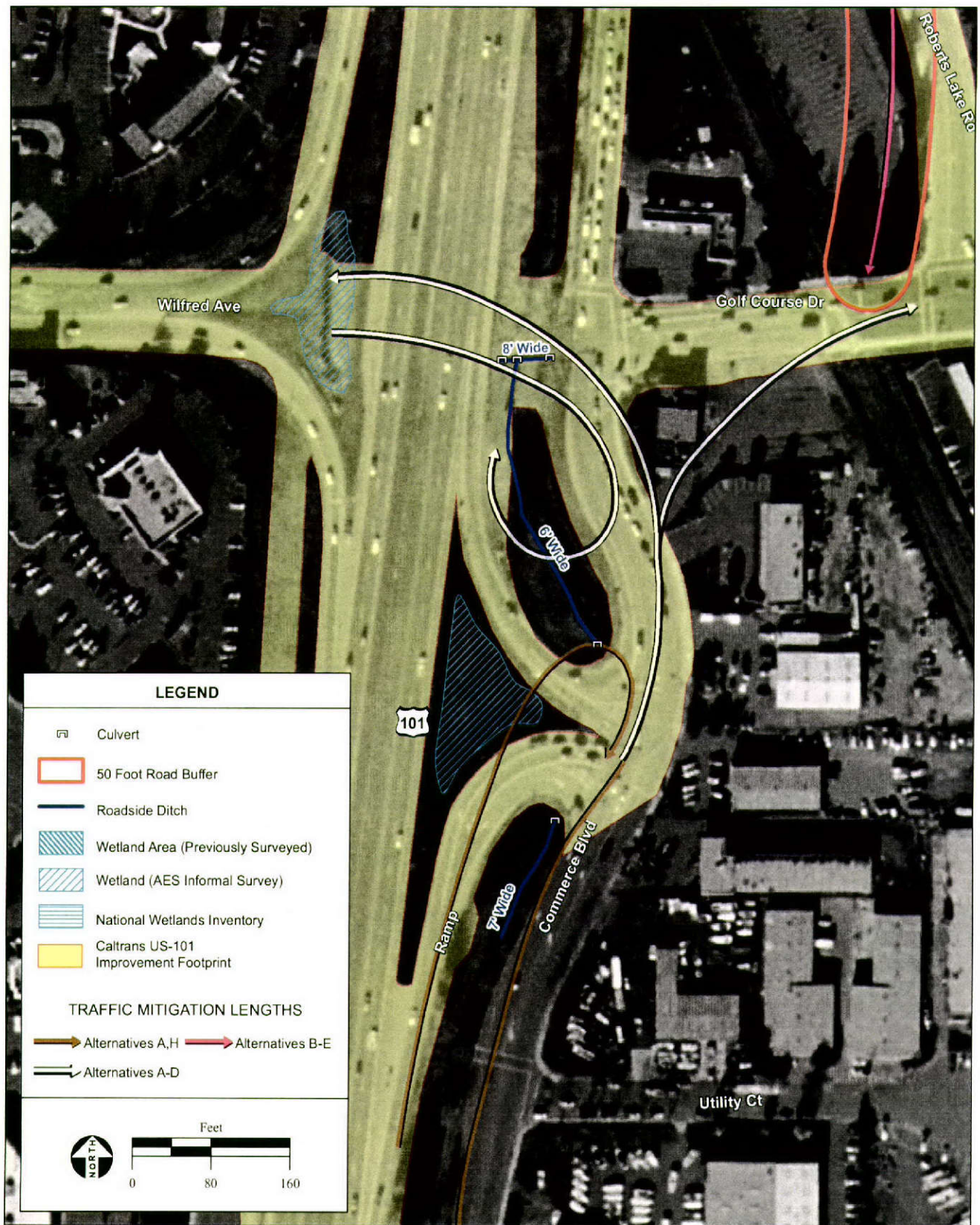
Closeup-View of Intersection 8 - Alternatives A-E and H



SOURCE: DigitalGlobe aerial photograph, 6/11/04; U.S. Dept. of the Interior Fish and Wildlife Service Office of Biological Services, 1973; AES 2007

Graton Rancheria Casino and Hotel EIS / 203523 ■

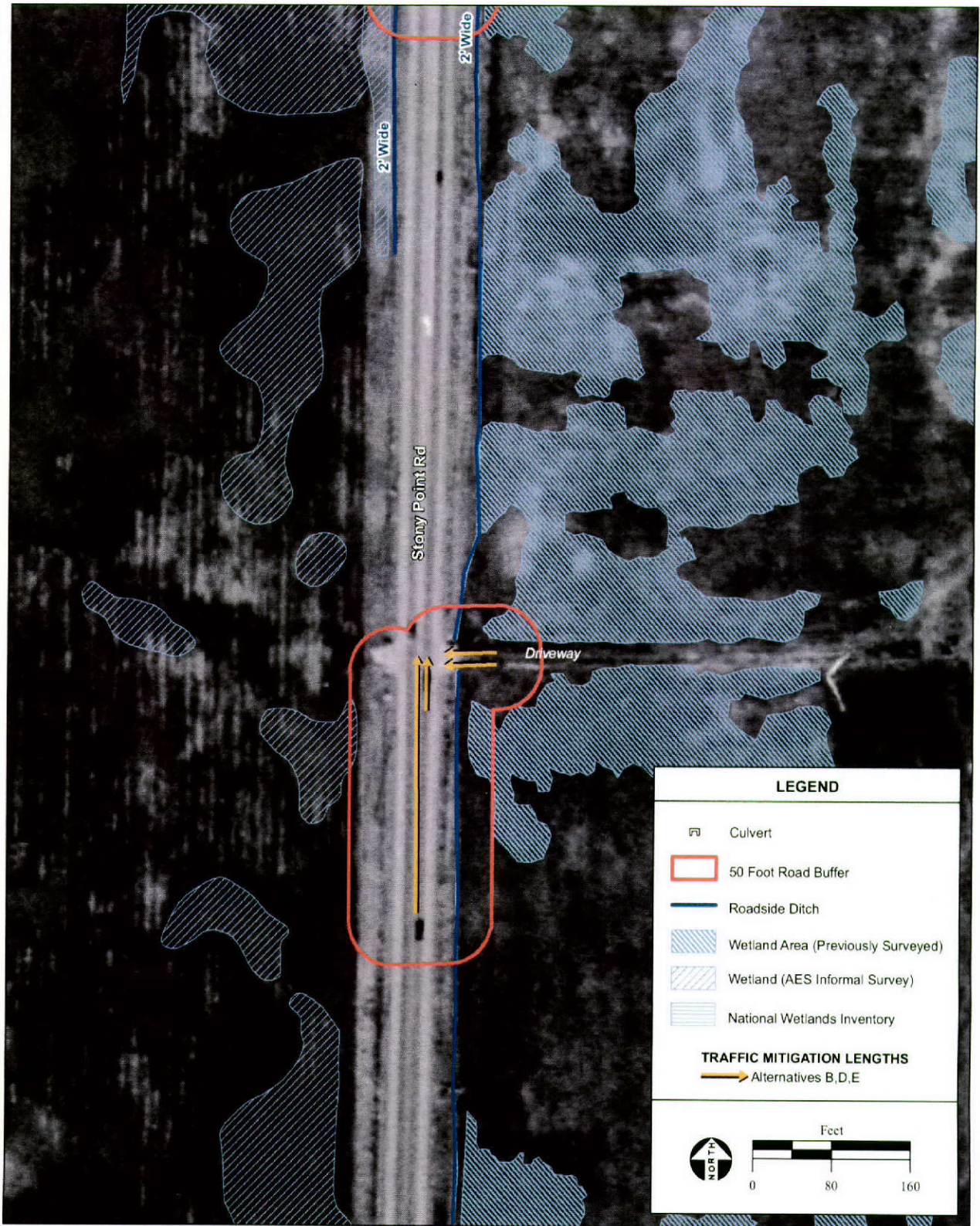
Closeup-View of Intersection 9 - Alternatives A-E and H



SOURCE: DigitalGlobe aerial photograph, 6/11/04; U.S. Dept. of the Interior Fish and Wildlife Service Office of Biological Services, 1973; AES 2007

Graton Rancheria Casino and Hotel EIS / 203523 ■

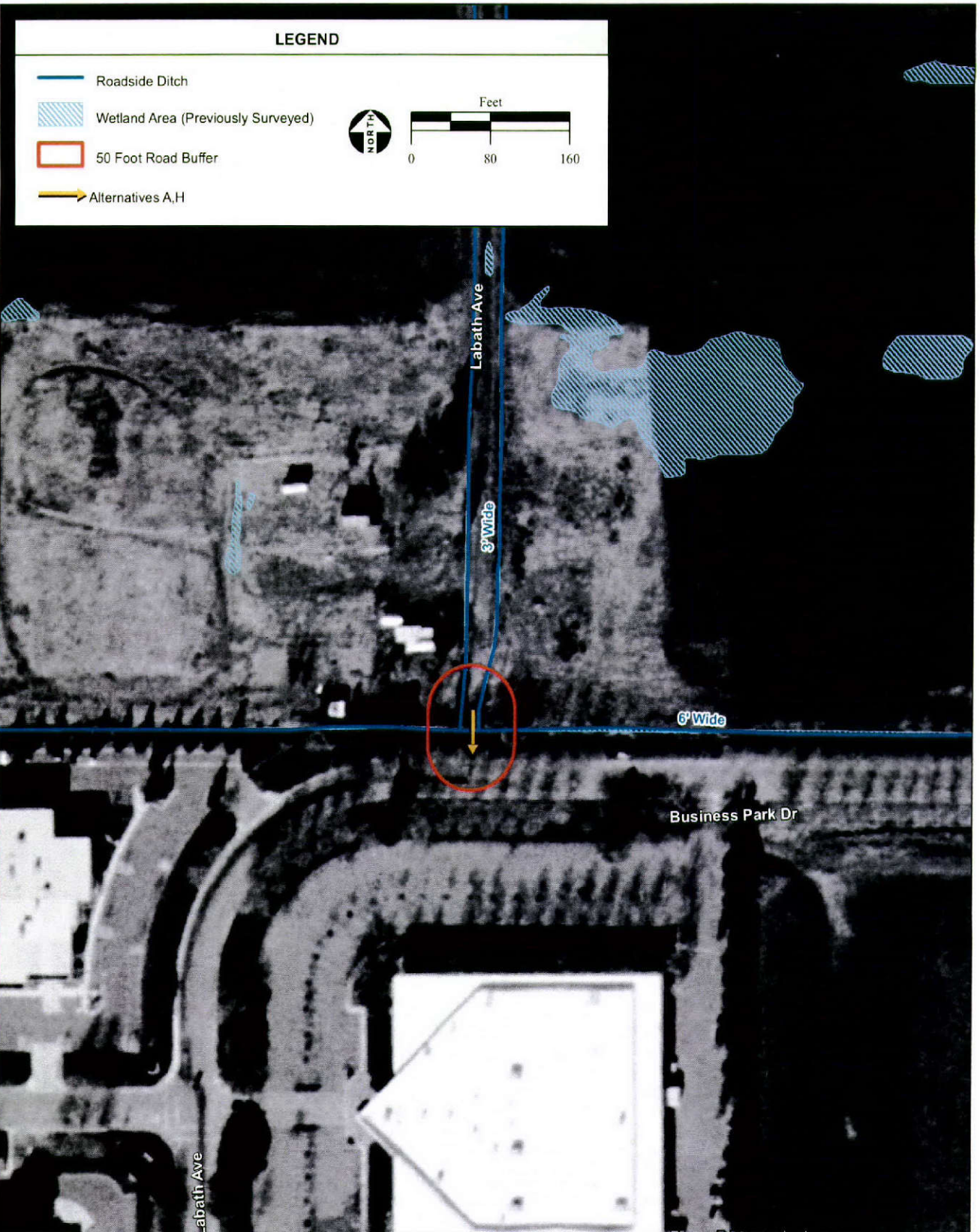
Closeup-View of Intersections 10,11,12- Alternatives A-E and H



SOURCE: DigitalGlobe aerial photograph, 6/11/04; U.S. Dept. of the Interior Fish and Wildlife Service Office of Biological Services, 1973; AES 2007

Graton Rancheria Casino and Hotel EIS / 203523 ■

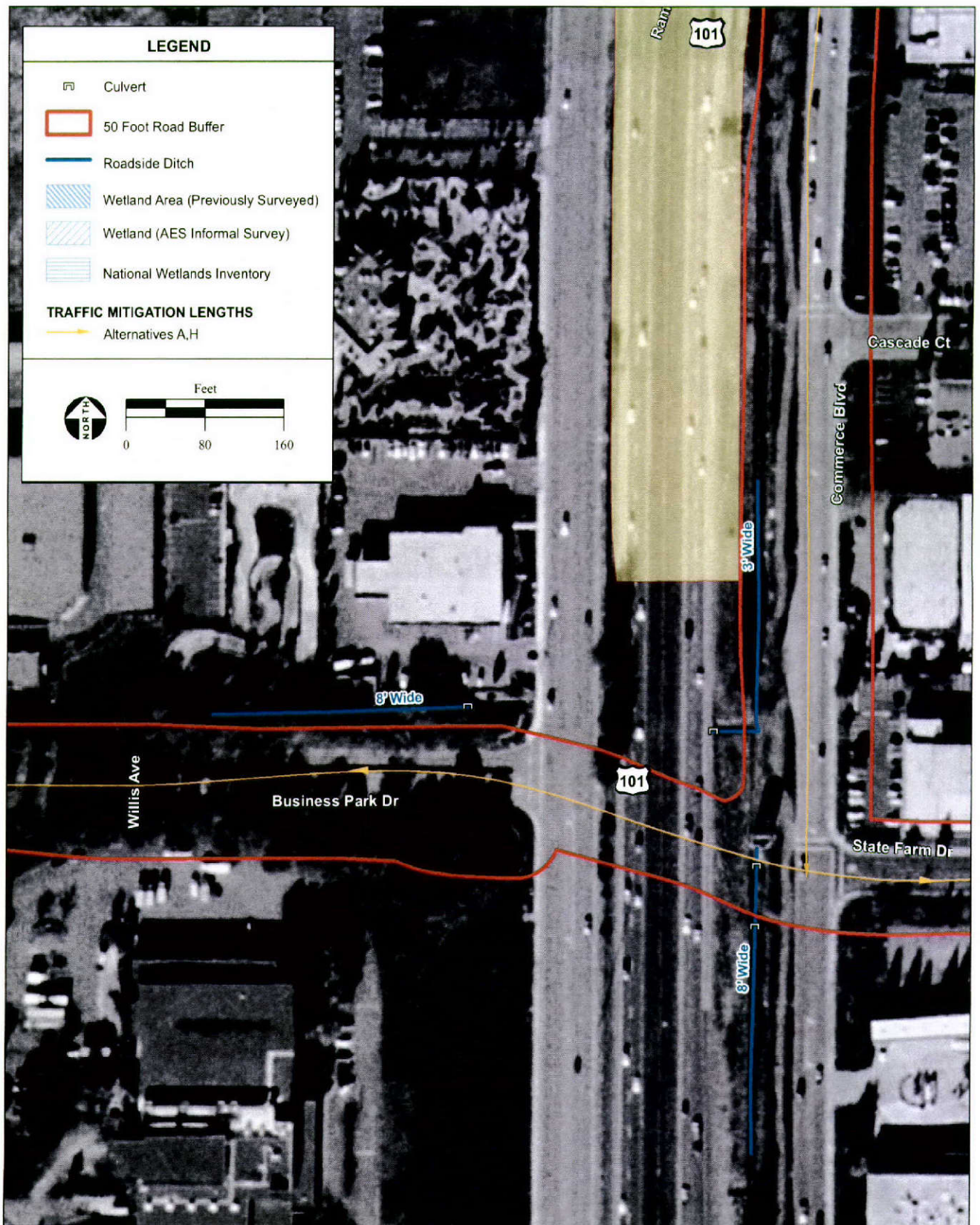
Close-up-View of Intersection 13 - Alternatives A-E and H



SOURCE: DigitalGlobe aerial photograph, 6/11/04; U.S. Dept. of the Interior Fish and Wildlife Service Office of Biological Services, 1973; AES 2007

Graton Rancheria Casino and Hotel EIS / 203523 ■

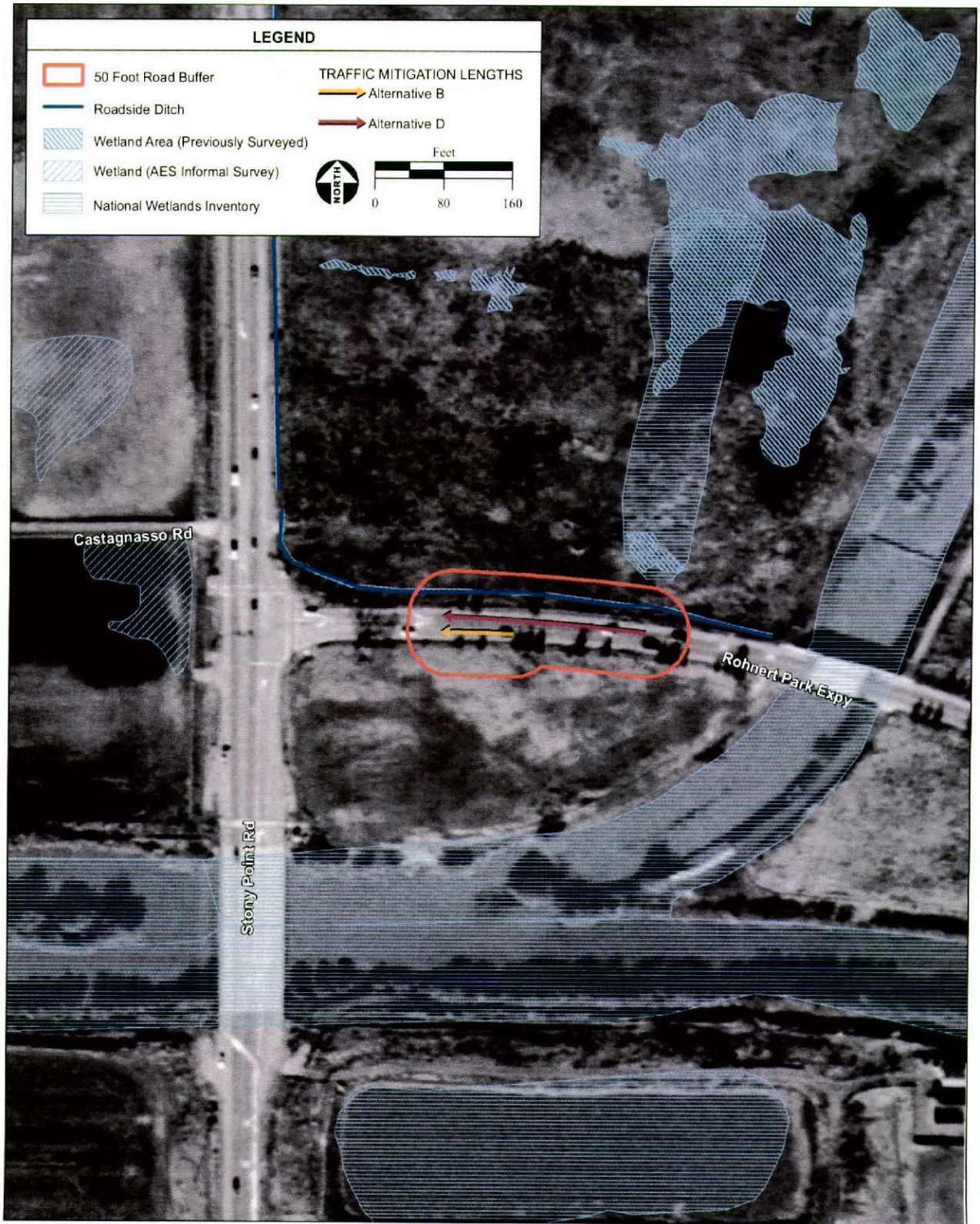
Closeup-View of Intersection 14 - Alternatives A-E and H



SOURCE: DigitalGlobe aerial photograph, 6/11/04; U.S. Dept. of the Interior Fish and Wildlife Service Office of Biological Services, 1973; AES 2007

Graton Rancheria Casino and Hotel EIS / 203523 ■

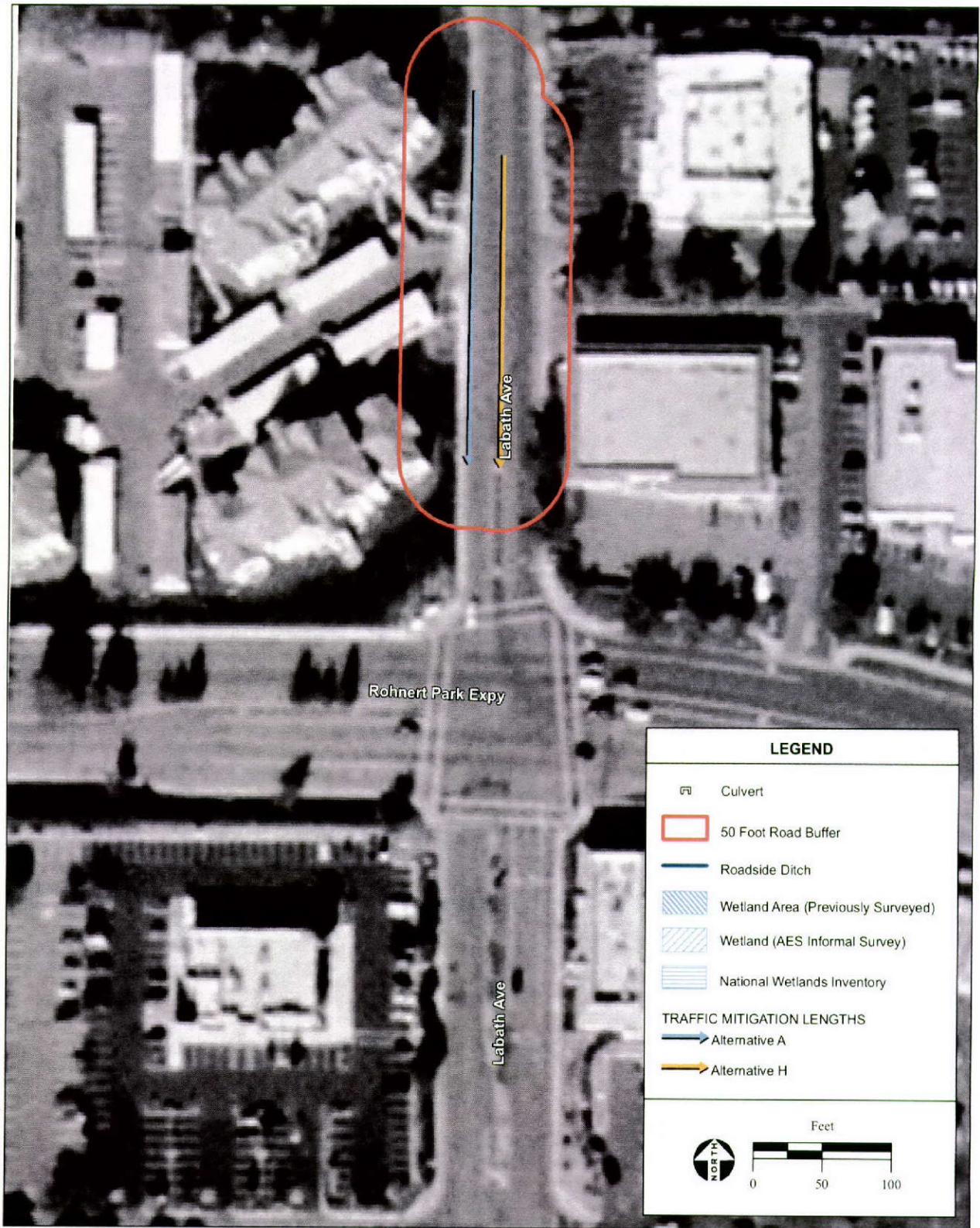
Close-up View of Intersection 15 - Alternatives A-E and H



SOURCE: DigitalGlobe aerial photograph, 6/11/04; U.S. Dept. of the Interior Fish and Wildlife Service Office of Biological Services, 1973; AES 2007

Graton Rancheria Casino and Hotel EIS / 203523 ■

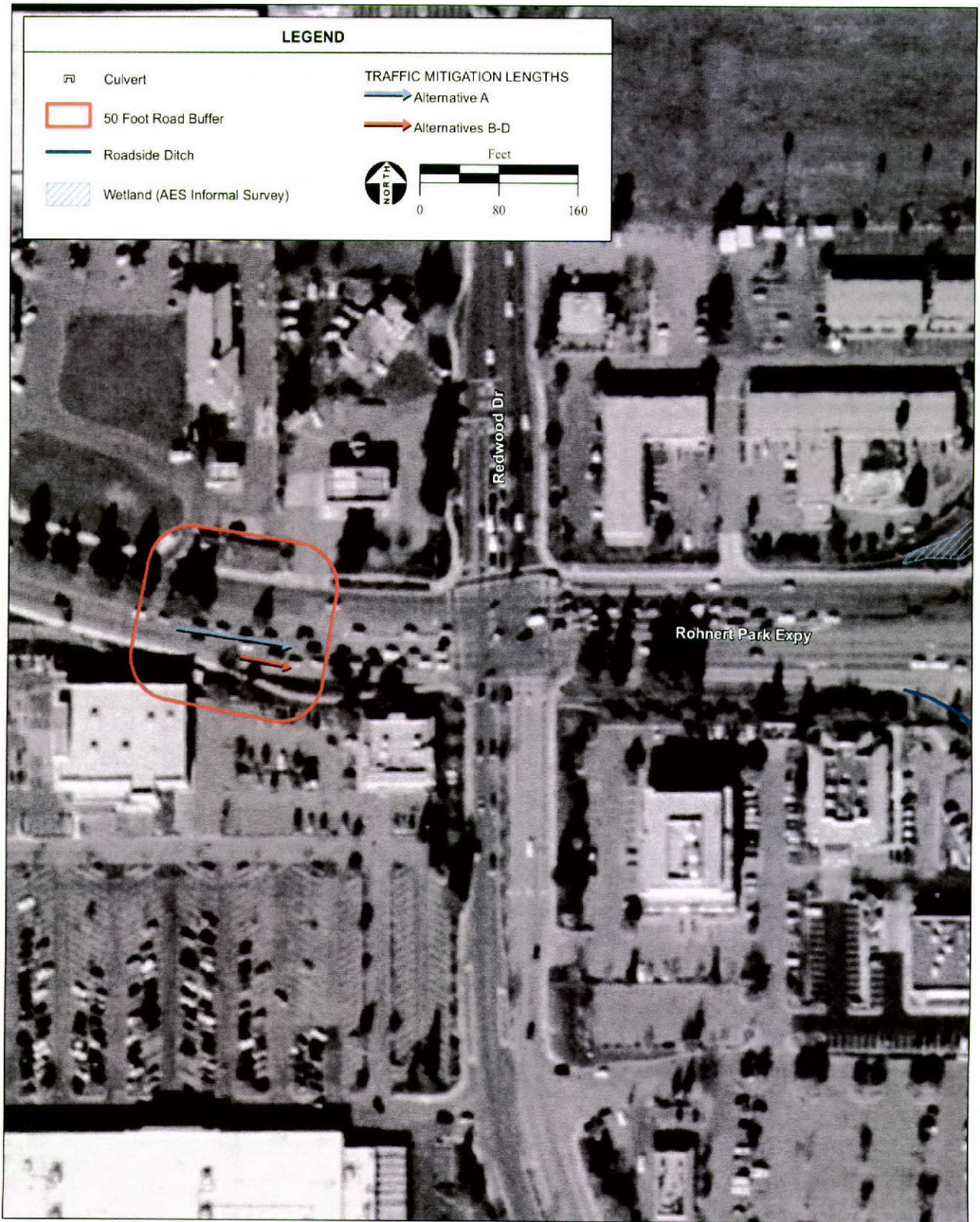
Close-up-View of Intersection 16 - Alternatives A-E and H



SOURCE: LandVoyage aerial photograph, 11/1/05; AES 2007

Graton Rancheria Casino and Hotel EIS / 203523 ■

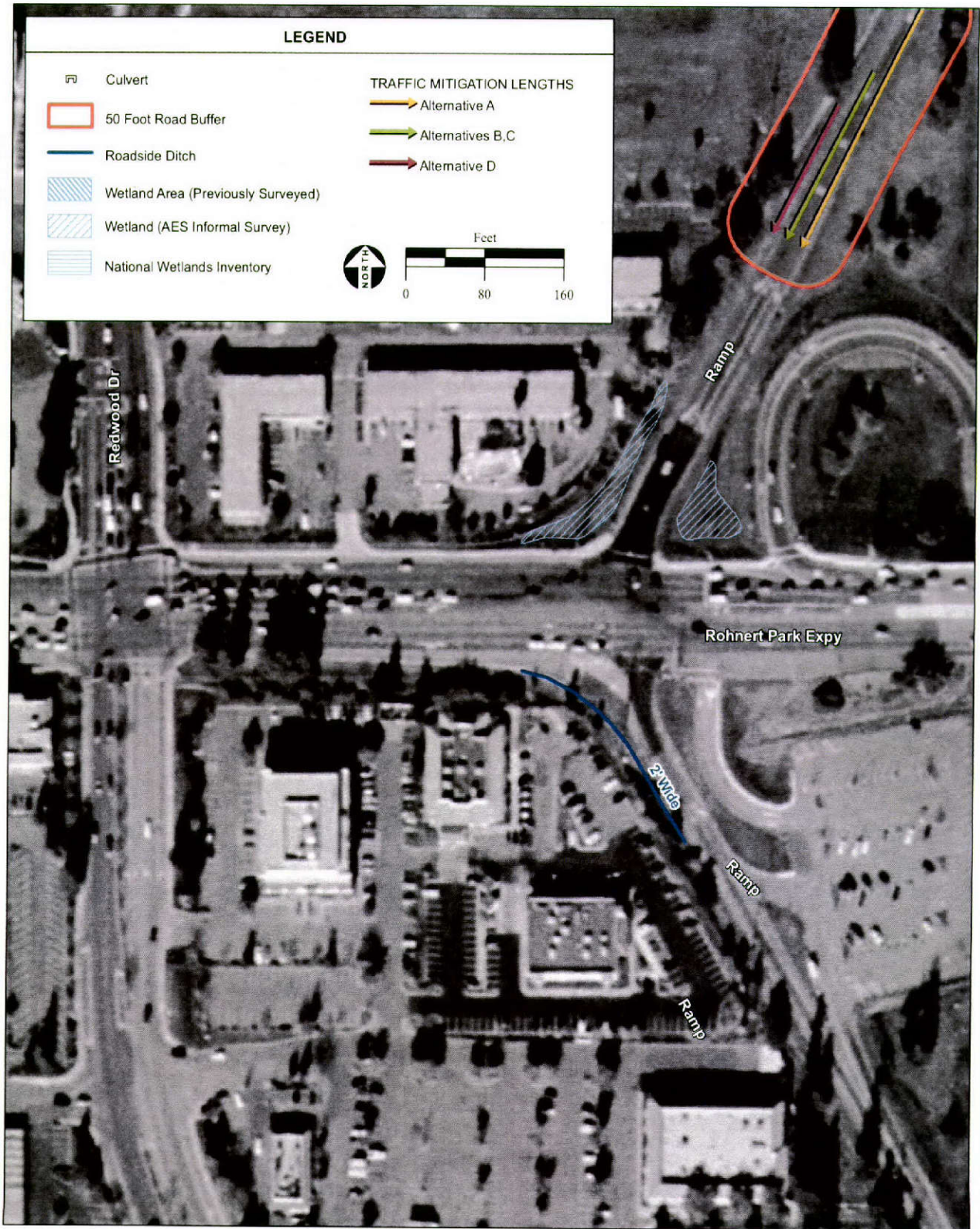
Closeup-View of Intersection 17 - Alternatives A-E and H



SOURCE: DigitalGlobe aerial photograph, 6/11/04; U.S. Dept. of the Interior Fish and Wildlife Service Office of Biological Services, 1973; AES 2007

Graton Rancheria Casino and Hotel EIS / 203523 ■

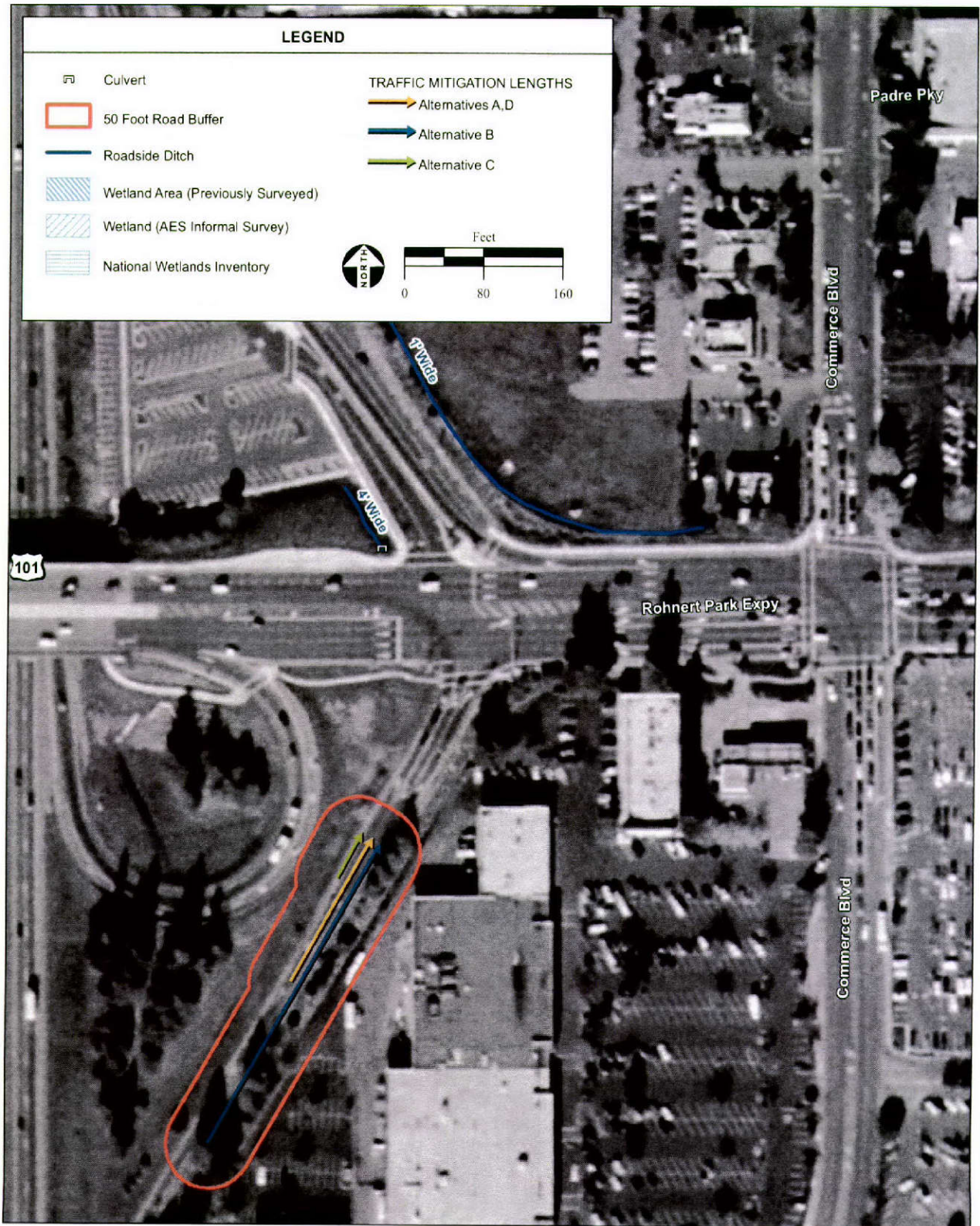
Close-up of Intersection 18 - Alternatives A-E and H



SOURCE: DigitalGlobe aerial photograph, 6/11/04; U.S. Dept. of the Interior Fish and Wildlife Service Office of Biological Services, 1973; AES 2007

Graton Rancheria Casino and Hotel EIS / 203523 ■

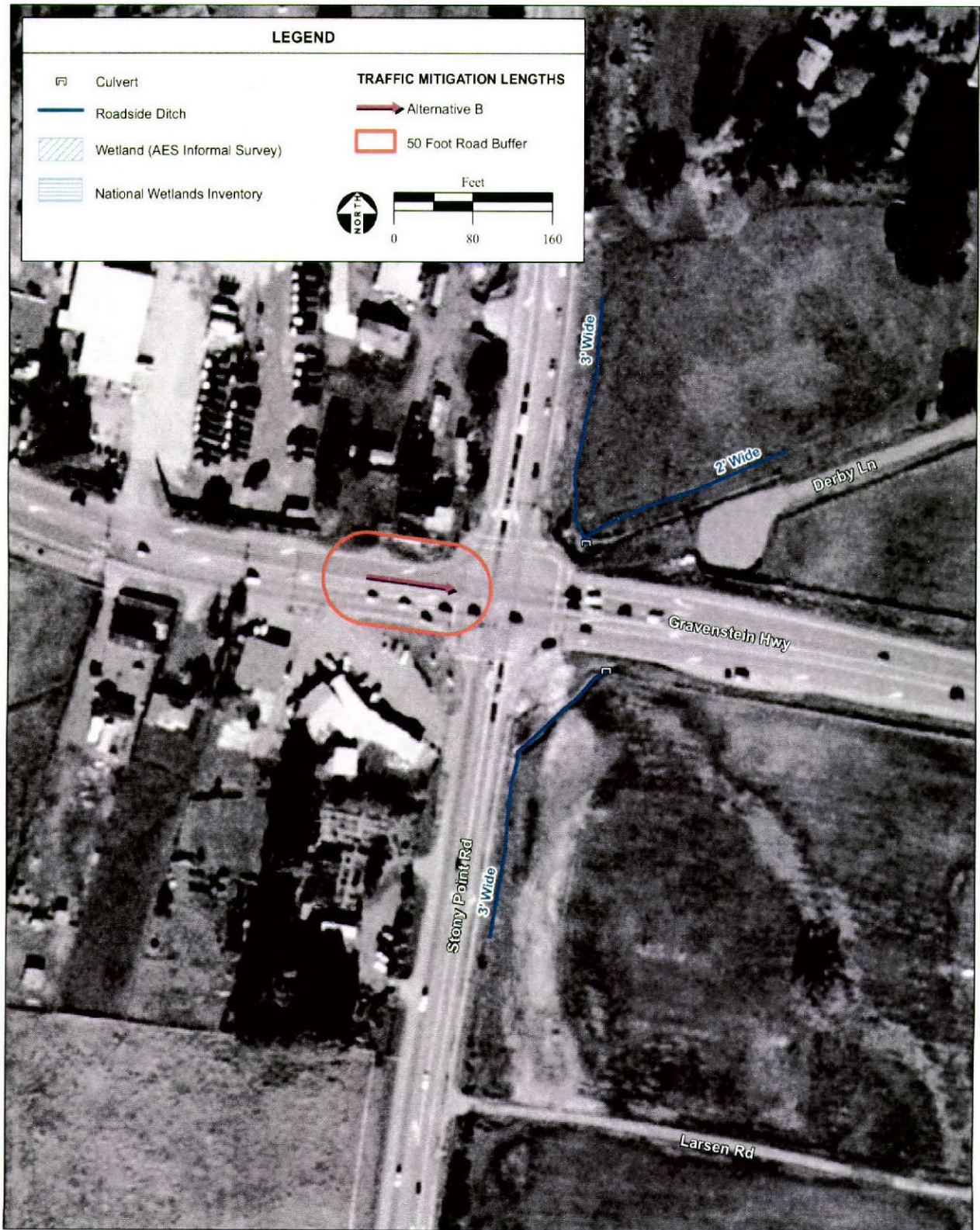
Close-up of Intersection 19 - Alternatives A-E and H



SOURCE: DigitalGlobe aerial photograph, 6/11/04; U.S. Dept. of the Interior Fish and Wildlife Service Office of Biological Services, 1973; AES 2007

Graton Rancheria Casino and Hotel EIS / 203523 ■

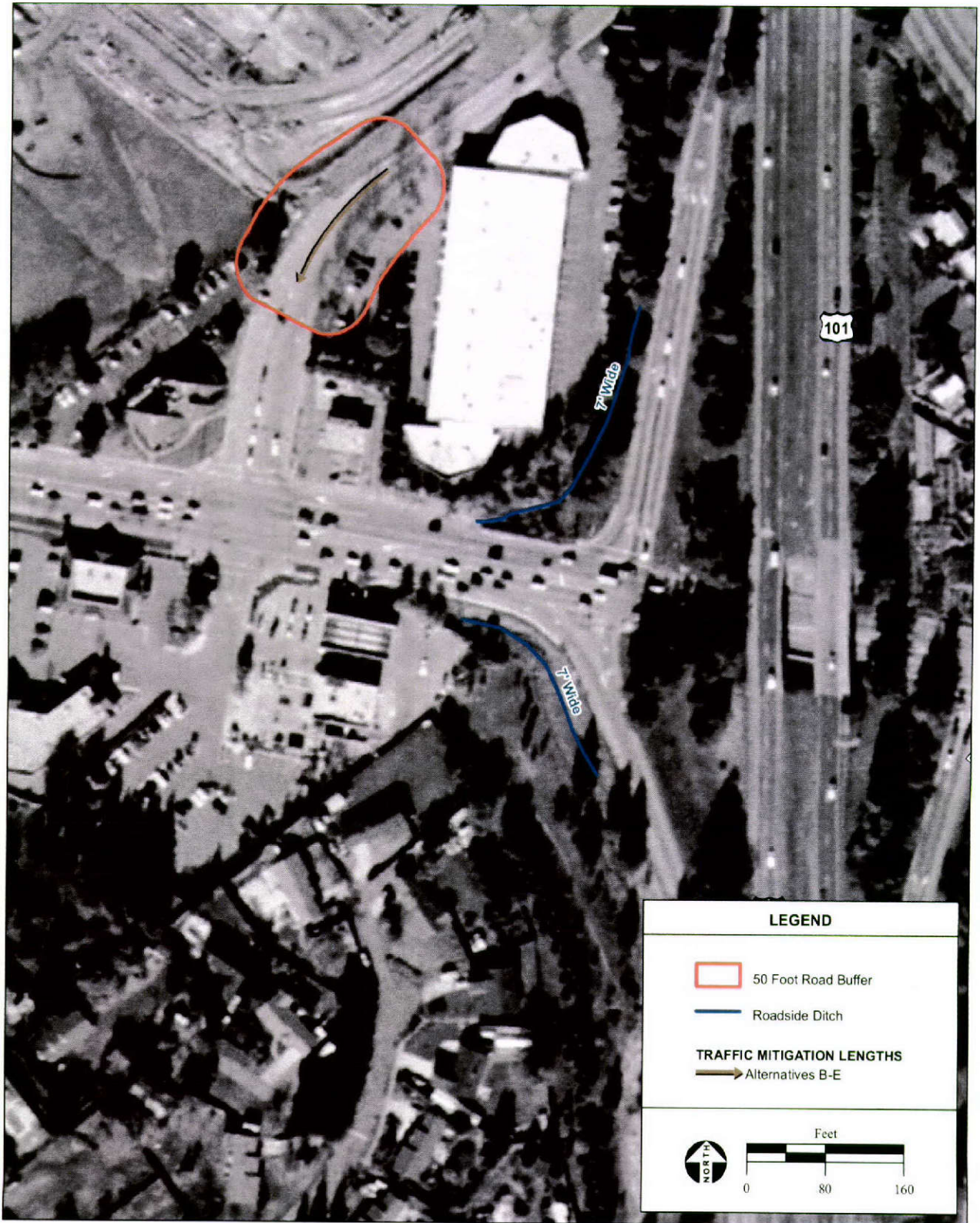
Close-up-View of Intersection 20 - Alternatives A-E and H



SOURCE: DigitalGlobe aerial photograph, 6/11/04; U.S. Dept. of the Interior Fish and Wildlife Service Office of Biological Services, 1973; AES 2007

Graton Rancheria Casino and Hotel EIS / 203523 ■

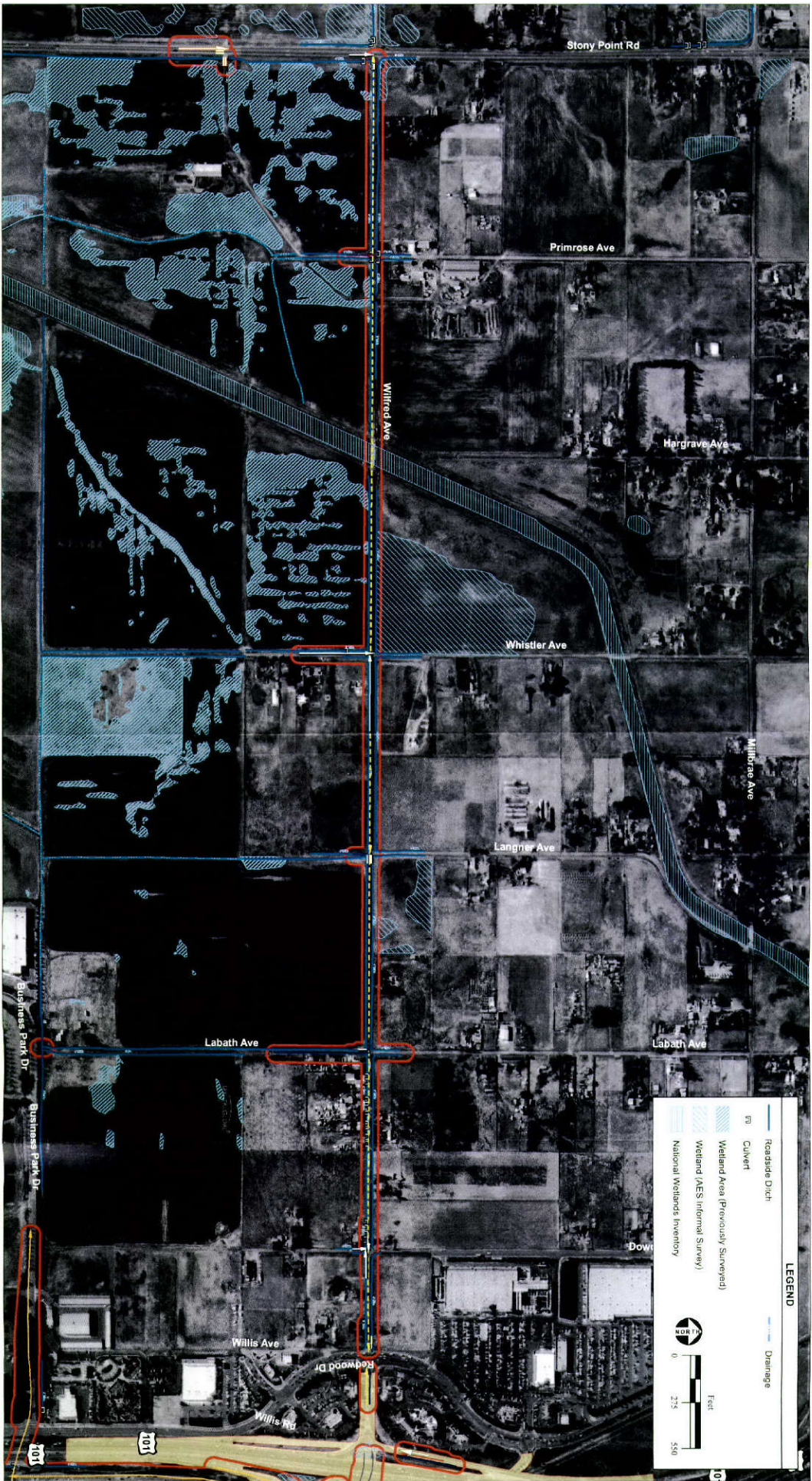
Close-up-View of Intersection 22 - Alternatives A-E and H



SOURCE: DigitalGlobe aerial photograph, 6/11/04; U.S. Dept. of the Interior Fish and Wildlife Service Office of Biological Services, 1973; AES 2007

Graton Rancheria Casino and Hotel EIS / 203523 ■

Closeup-View of Intersections 23 and 24 - Alternatives A-E and H

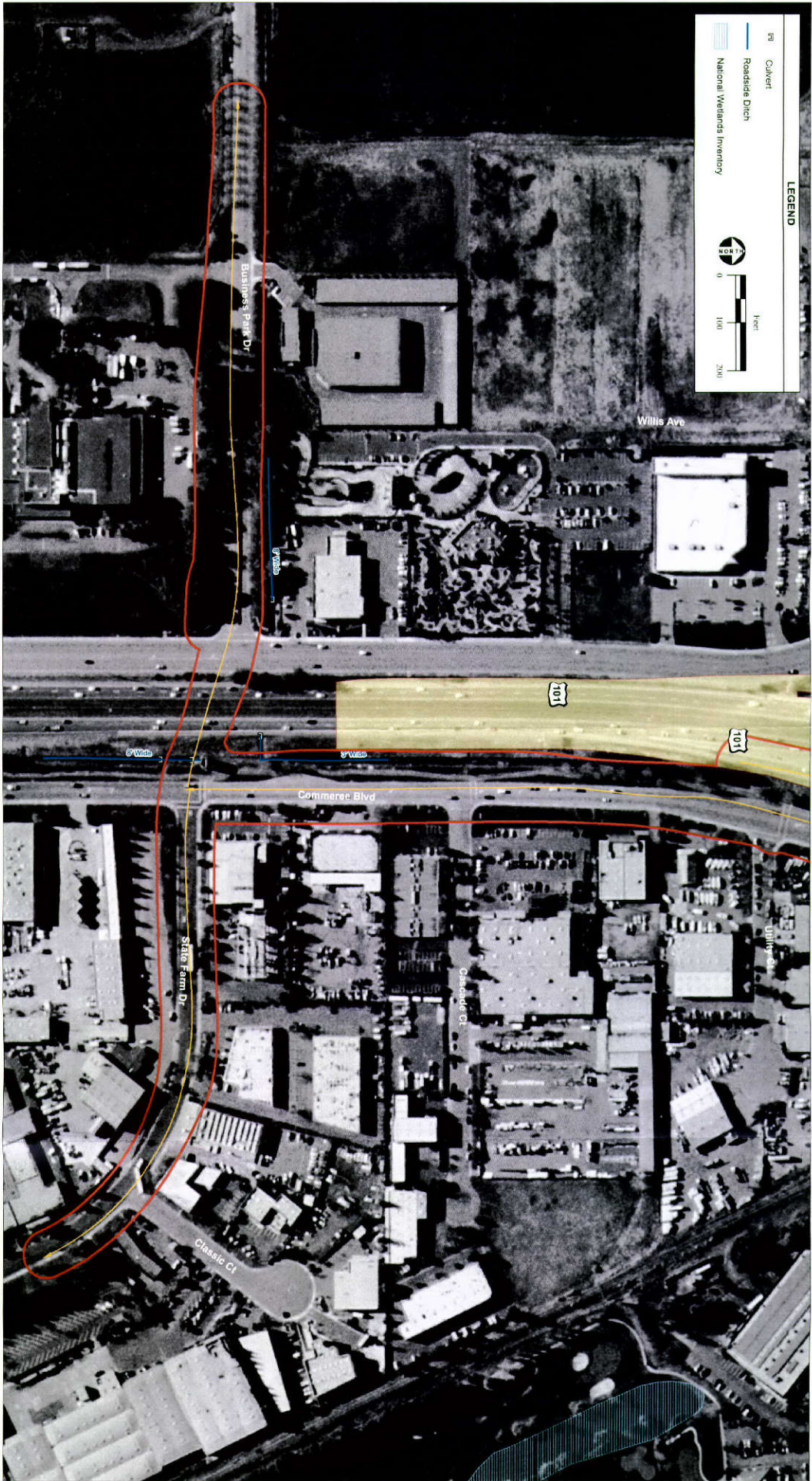


- Alternative B, D, E
- Alternative A, H
- Alternative A, E Segment/Improvements
- Alternative A
- Alternative A, D
- Alternative A, E
- Alternative B
- Alternative B, D
- Alternative C
- Alternative D, E
- Alternative E
- 50 Foot Road Buffer
- California US-101 Improvement Program

SOURCE: Appendix SA.111106; Hartman Brundage; 2006; U.S. Dept. of the Interior Fish and Wildlife Service Office of Biological Services; 1973; AIS 2007

Graton Rancheria Casino and Hotel EIS / 203523

Wilfred Avenue from Stony Point Road to US-101



50 Foot Road Buffer
 California US-101 Improvement Footprint
 Alternative A-H

SOURCE: AerialphotoUSA II (1.05); Huffman Broadway, 2006; U.S. Dept. of the Interior Fish and Wildlife Service Office of Biological Services, 1973; A13, 2007

Area of Connector between Business Park Drive and State Farm Drive

Granite Rancheria Casino and Hotel EIS / 203523

*Traffic Mitigation/Indirect Impacts to Waters of the U.S. –
Wilfred/Stony Point Site Photographs*



PHOTO 1

At the northeast corner of Intersection #1 looking east



PHOTO 2

At the northeast corner of Intersection #1 looking north



PHOTO 3

At the southeast corner of Intersection #1 looking south



PHOTO 4

At the southwest corner of Intersection #1 looking west



PHOTO 5

At the northeast corner of Intersection #2 looking east



PHOTO 6

At the northeast corner of Intersection #2 looking north



PHOTO 7

At the northwest corner of Intersection #2 looking west



PHOTO 8

At the southwest corner of Intersection #2 looking south



PHOTO 9

At the northwest corner of Intersection #3 looking west



PHOTO 10

At the southwest corner of Intersection #3 looking south



PHOTO 11

At the northeast corner of Intersection #4 looking east



PHOTO 12

At the northwest corner of Intersection #4 looking north



PHOTO 13

At the northeast corner of Intersection #5 looking east



PHOTO 14

At the northeast corner of Intersection #5 looking north



PHOTO 15
At the northeast corner of Intersection #6 looking north



PHOTO 16
At the southeast corner of Intersection #6 looking south



PHOTO 17
At the northwest corner of Intersection #7 looking north



PHOTO 18
At the northwest corner of Intersection #7 looking west



PHOTO 19
At the north side corner of Intersection #8 looking south along the ditch



PHOTO 20
At the south side corner of Intersection #8 looking north along the ditch



PHOTO 21
At the southwest corner of Intersection #9 looking west



PHOTO 22
At the southwest corner of Intersection #10 looking north



PHOTO 23
At the northeast corner of Intersection #11 looking north



PHOTO 24
At the southeast corner of Intersection #11 looking south



PHOTO 25
At the southwest corner of Intersection #11 looking south



PHOTO 26
At the west side corner of Intersection #11 looking west



PHOTO 27

At the southwest corner of Intersection #12 looking south



PHOTO 28

Just south of the southwest corner of Intersection #13 looking south



PHOTO 29

At the southeast corner of Intersection #13 looking east



PHOTO 30

At the southwest corner of Intersection #13 looking south



PHOTO 31

At the southwest corner of Intersection #13 looking west



PHOTO 32

At the southwest corner of Intersection #14 looking north-east



PHOTO 33

At the southeast corner of Intersection #15 looking north-west



PHOTO 34

At the north side corner of Intersection #16 looking north-east



PHOTO 35

At the northwest corner of Intersection #16 looking north



PHOTO 36

At the southwest corner of Intersection #16 looking south



PHOTO 37

At the southwest corner of Intersection #16 looking west



PHOTO 38

At the northwest corner of Intersection #17 looking north-west



PHOTO 39

At the southwest corner of Intersection #18 looking north-east



PHOTO 40

At the northeast corner of Intersection #19 looking east



PHOTO 41

At the northeast corner of Intersection #19 looking north



PHOTO 42

At the southeast corner of Intersection #19 looking north-west



PHOTO 43

At the southeast corner of Intersection #19 looking south



PHOTO 44

At the southeast corner of Intersection #20 looking east



PHOTO 45

At the northwest corner of Intersection #21 looking north along the ditch



PHOTO 46

At the southwest corner of Intersection #21 looking southeast along the ditch



PHOTO 47

At the northeast corner of Intersection #22 looking north



PHOTO 48

At the southeast corner of Intersection #22 looking east



PHOTO 49

At the southwest corner of Intersection #22 looking south



PHOTO 50

At the southwest corner of Intersection #22 looking west



PHOTO 51

View from Wilfred Avenue looking east from Primrose Avenue.



PHOTO 52

At the Labath Avenue Business Park looking east along the ditch



PHOTO 53

At Rancho Verde Circle looking southwest



PHOTO 54

Rohnert Park Expressway channel looking south



PHOTO 55

Rohnert Park Expressway channel under bridge looking east



PHOTO 56

At the southwest corner of the State Farm overpass looking west

*Traffic Mitigation/Indirect Impacts to Waters of the U.S. –
Lakeville Site Maps*



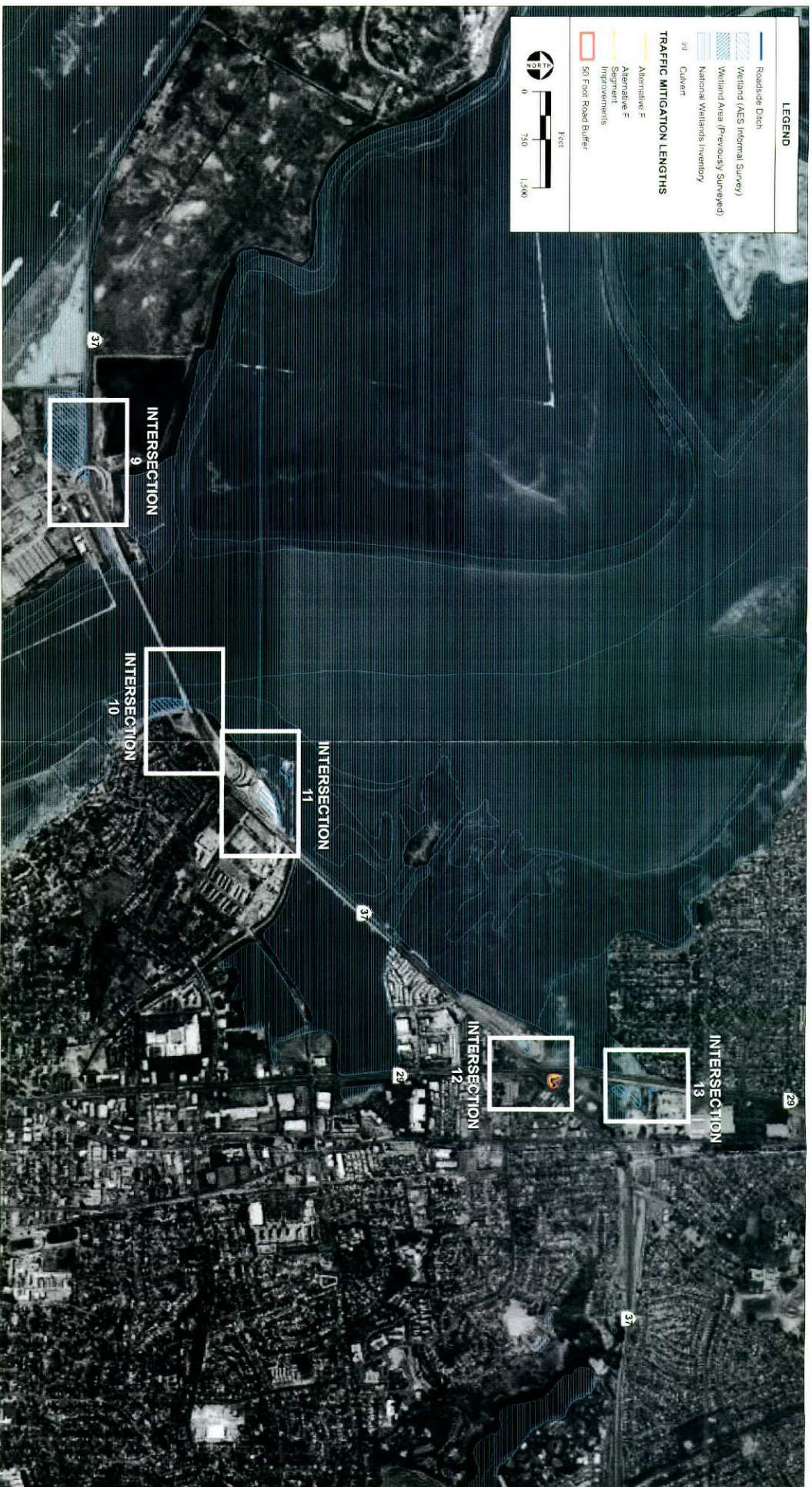
SOURCE: Google Earth Aerial, 2005; Hoffman Broadway, 2006; U.S. Dept. of the Interior Fish and Wildlife Service Office of Biological Services, 1975; AES 2007



SOURCE: Google Earth Aerials, 2005; Huffman Broadway, 2006; U.S. Dept. of the Interior Fish and Wildlife Service Office of Biological Services, 1973; AES 2007

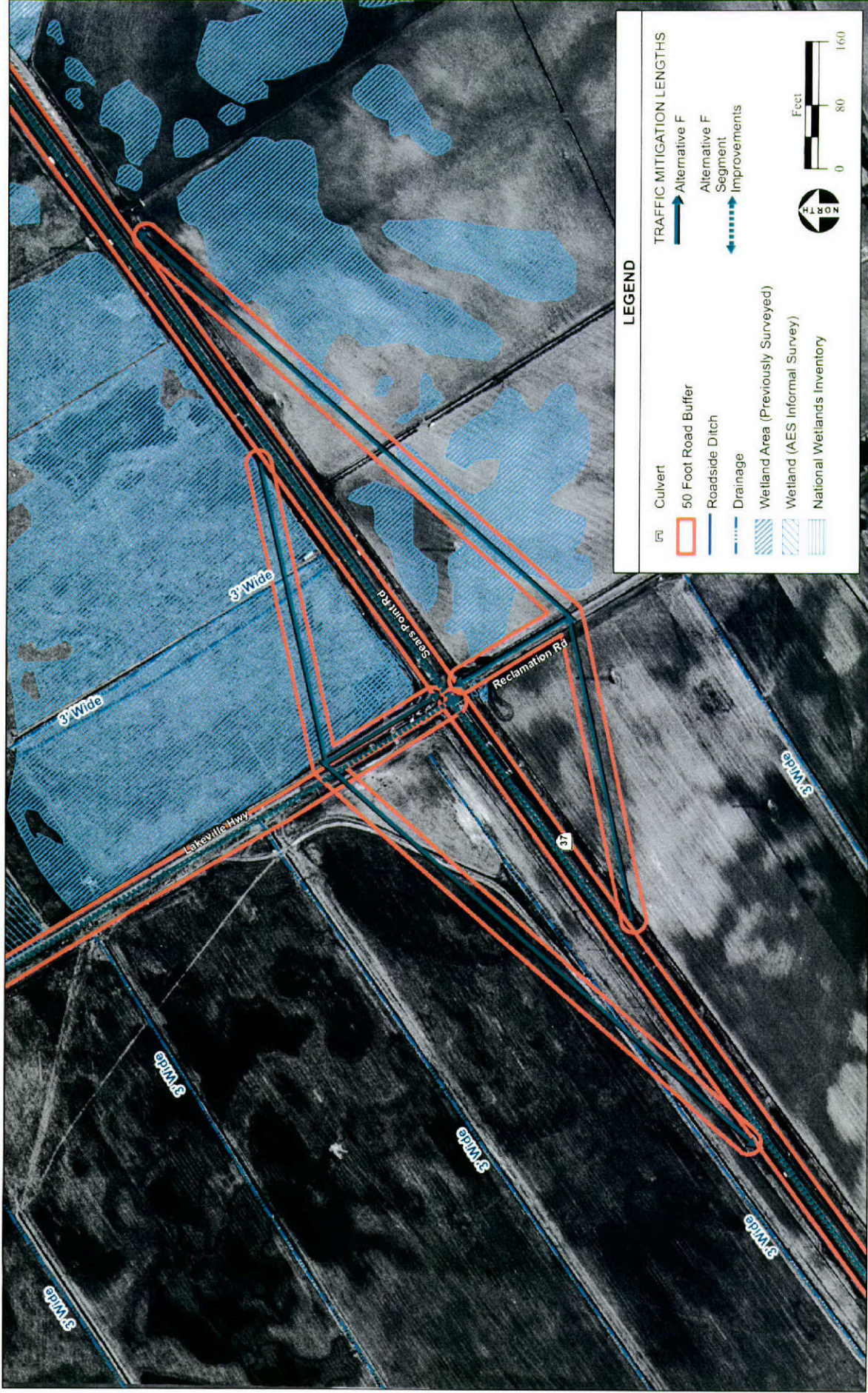
Graton Rancheria Casino and Hotel EIS / 203523 ■

Figure A
Intersections 3,4,5 and 6 - Lakeville Site



SOURCE: Appendix A, 11/1/05, AES, 2007

Quantum Research, Casino and Hotel, ENR 2013/13
Figure B
 Intersections 9, 10, 11, 12 and 13



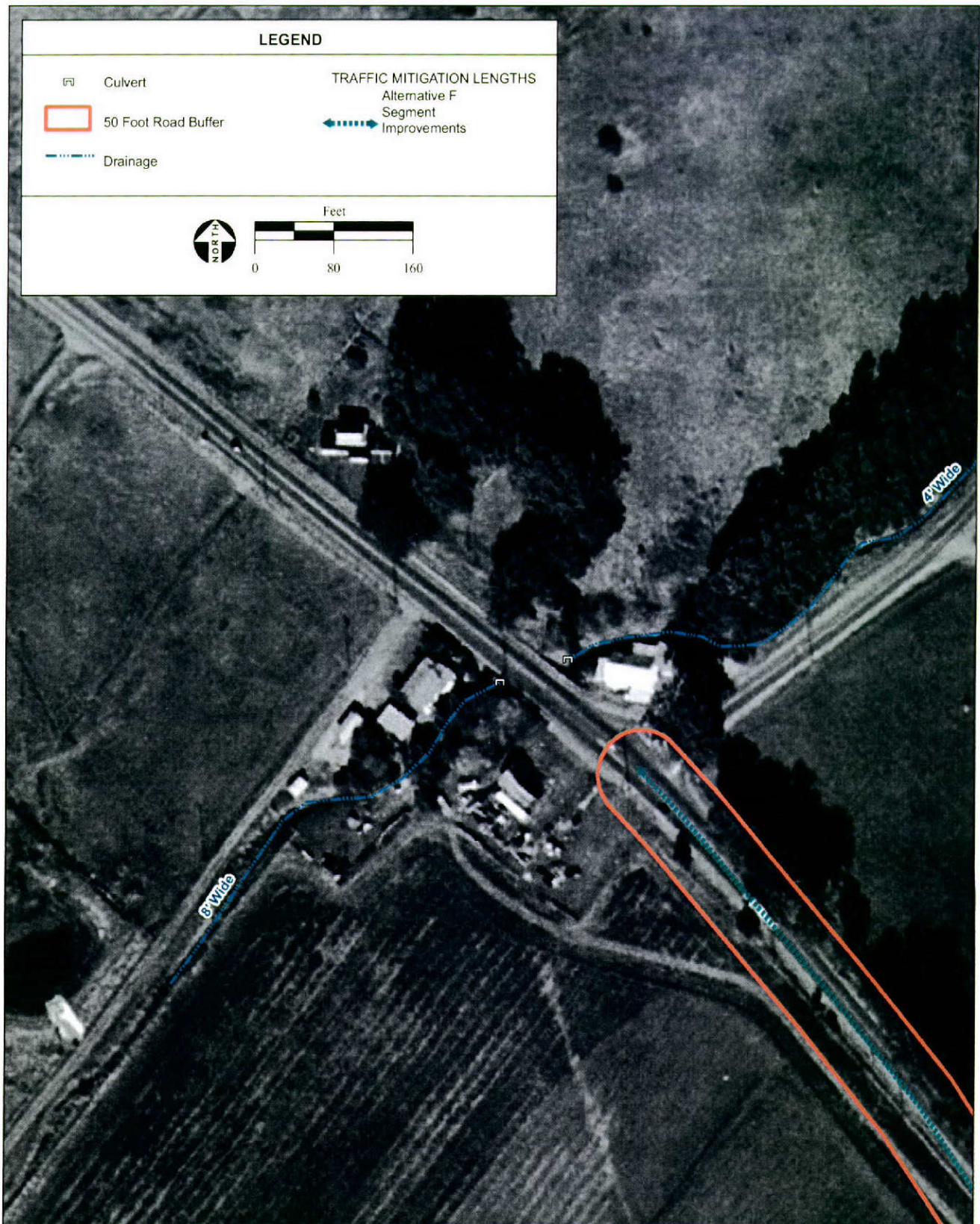
SOURCE: LandVoyage aerial photograph, 11/1/05; U.S. Dept. of the Interior Fish and Wildlife Service Office of Biological Services, 1973; Huffman Broadway, 2004; AES, 2007



SOURCE: LandVoyage aerial photograph, 11/1/05; U.S. Dept. of the Interior Fish and Wildlife Service Office of Biological Services, 1973; AES 2007

Graton Rancheria Casino and Hotel EIS / 203523 ■

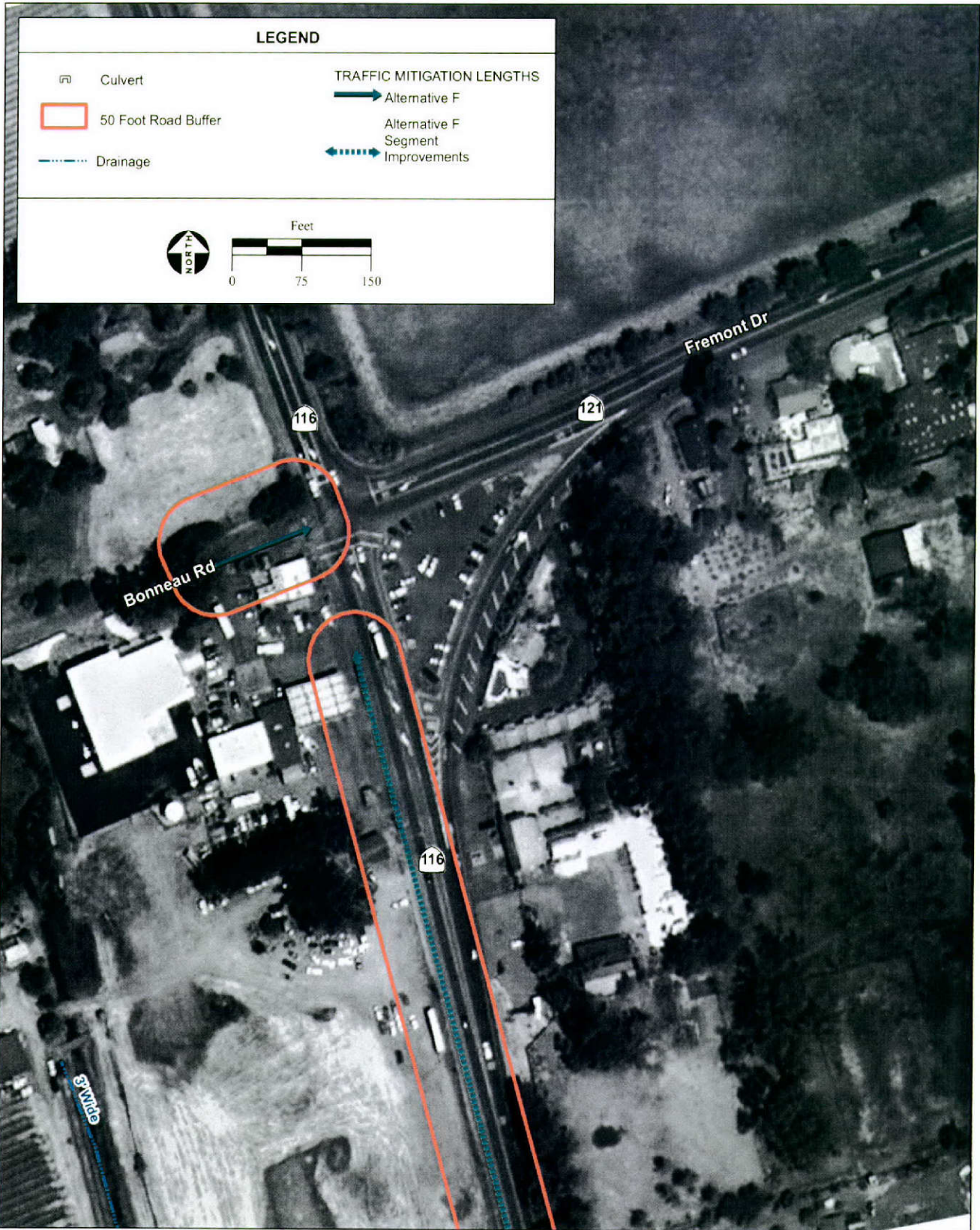
Closeup-View of Intersection 4- Alternative F



SOURCE: LandVoyage aerial photograph, 11/1/05; U.S. Dept. of the Interior Fish and Wildlife Service Office of Biological Services, 1973; AES 2007

Graton Rancheria Casino and Hotel EIS / 203523 ■

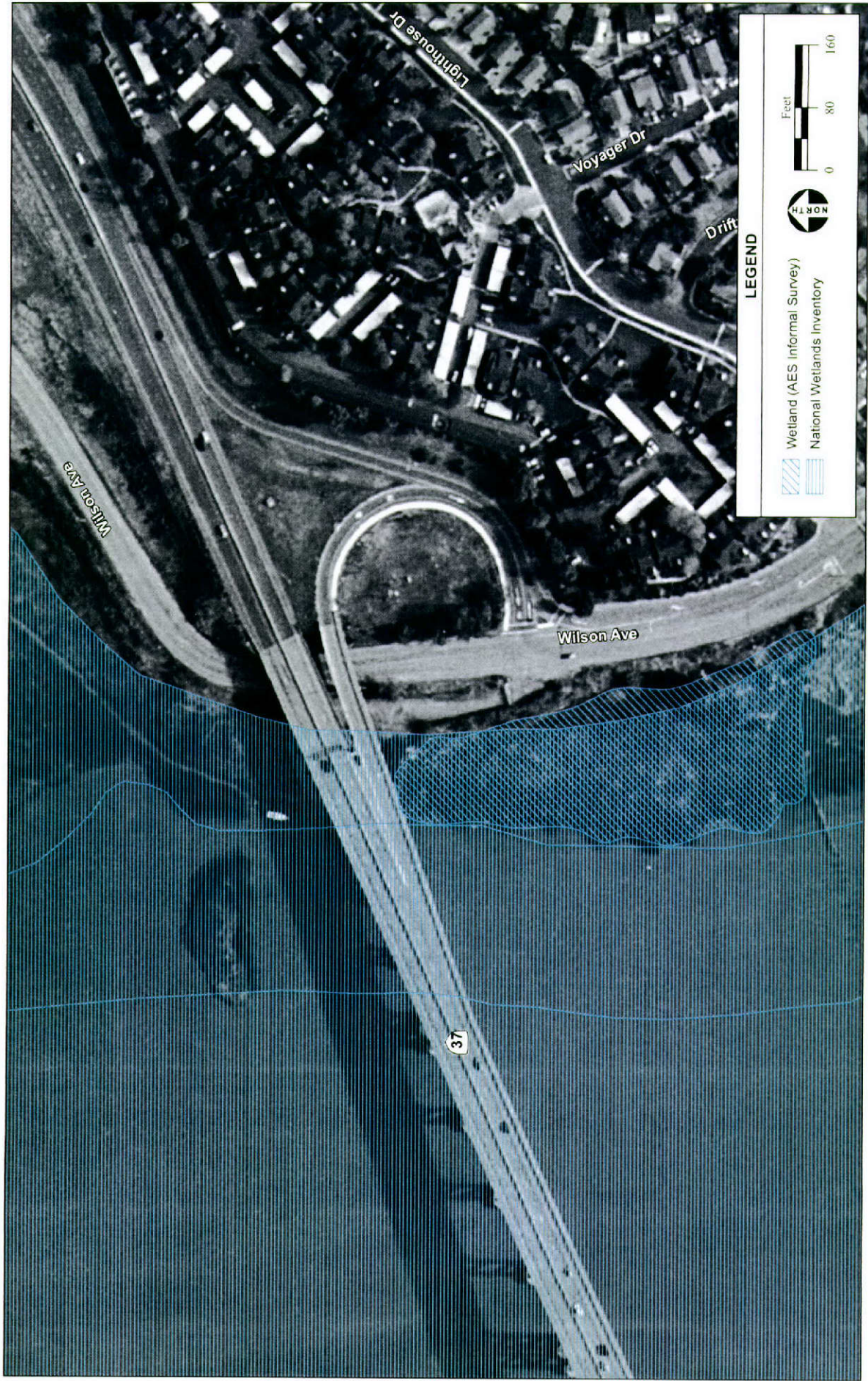
Closeup-View of Intersection 5 - Alternative F



SOURCE: LandVoyage aerial photograph, 11/1/05; U.S. Dept. of the Interior Fish and Wildlife Service Office of Biological Services, 1973; AES 2007

Graton Rancheria Casino and Hotel EIS / 203523 ■

Closeup-View of Intersection 6 - Alternative F



SOURCE: LandVoyage aerial photograph, 2/15/04; U.S. Dept. of the Interior Fish and Wildlife Service Office of Biological Services, 1973; AES 2007

Graton Rancheria Casino and Hotel EIS / 203523

Close-up View of Intersection 8 - Alternative F





SOURCE: LandVoyage aerial photograph, 2/15/04; U.S. Dept. of the Interior Fish and Wildlife Service Office of Biological Services, 1973; AES 2007

Graton Rancheria Casino and Hotel EIS / 203523

Close-up View of Intersection 10 - Alternative F



SOURCE: LandVoyage aerial photograph, 2/15/04; U.S. Dept. of the Interior Fish and Wildlife Service Office of Biological Services, 1973; AES 2007

Graton Rancheria Casino and Hotel EIS / 203523

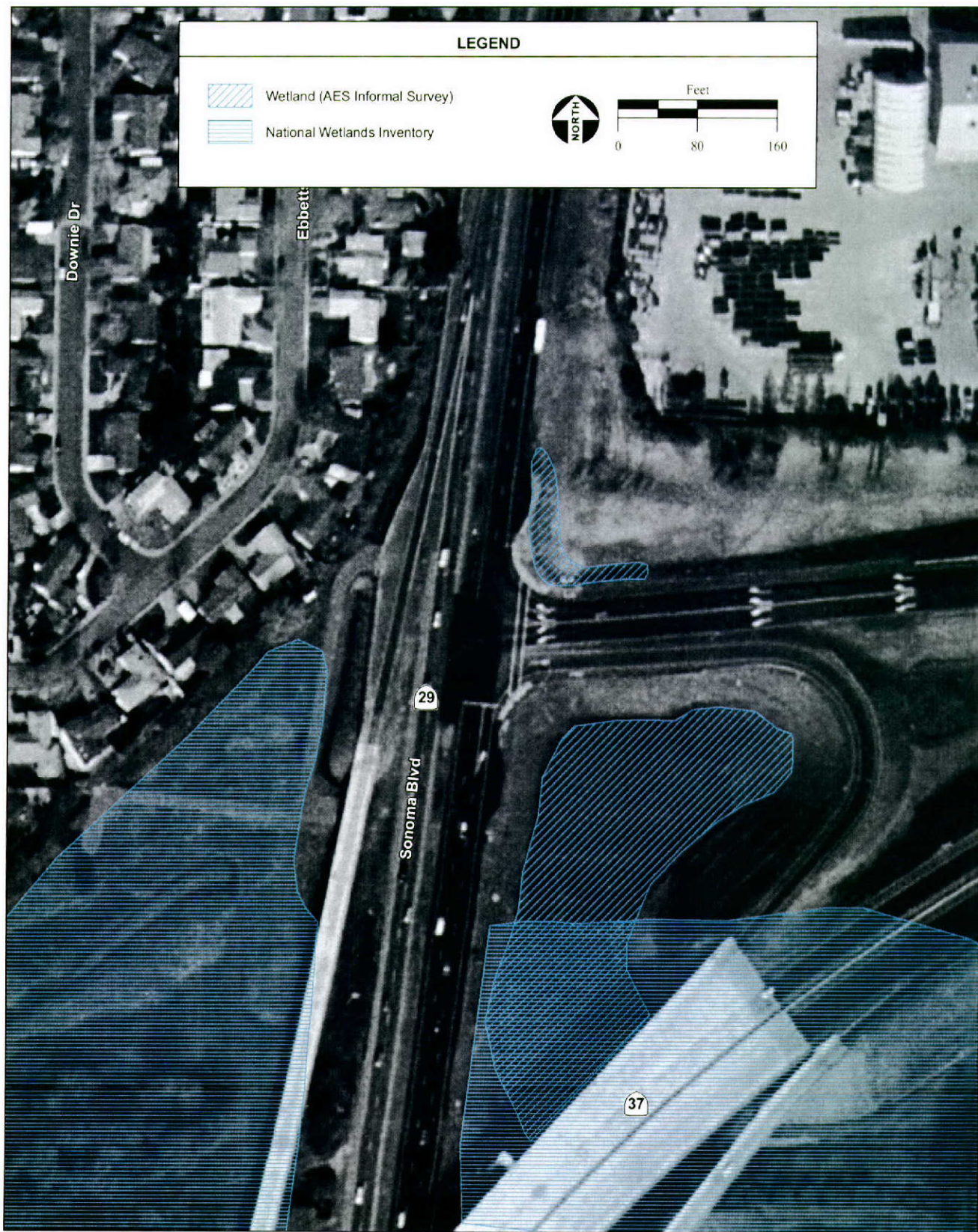
Close-up View of Intersection 11 - Alternative F



SOURCE: LandVoyage aerial photograph, 11/1/05; U.S. Dept. of the Interior Fish and Wildlife Service Office of Biological Services, 1973; AES 2007

Graton Rancheria Casino and Hotel EIS / 203523 ■

Closeup-View of Intersection 12 - Alternative F

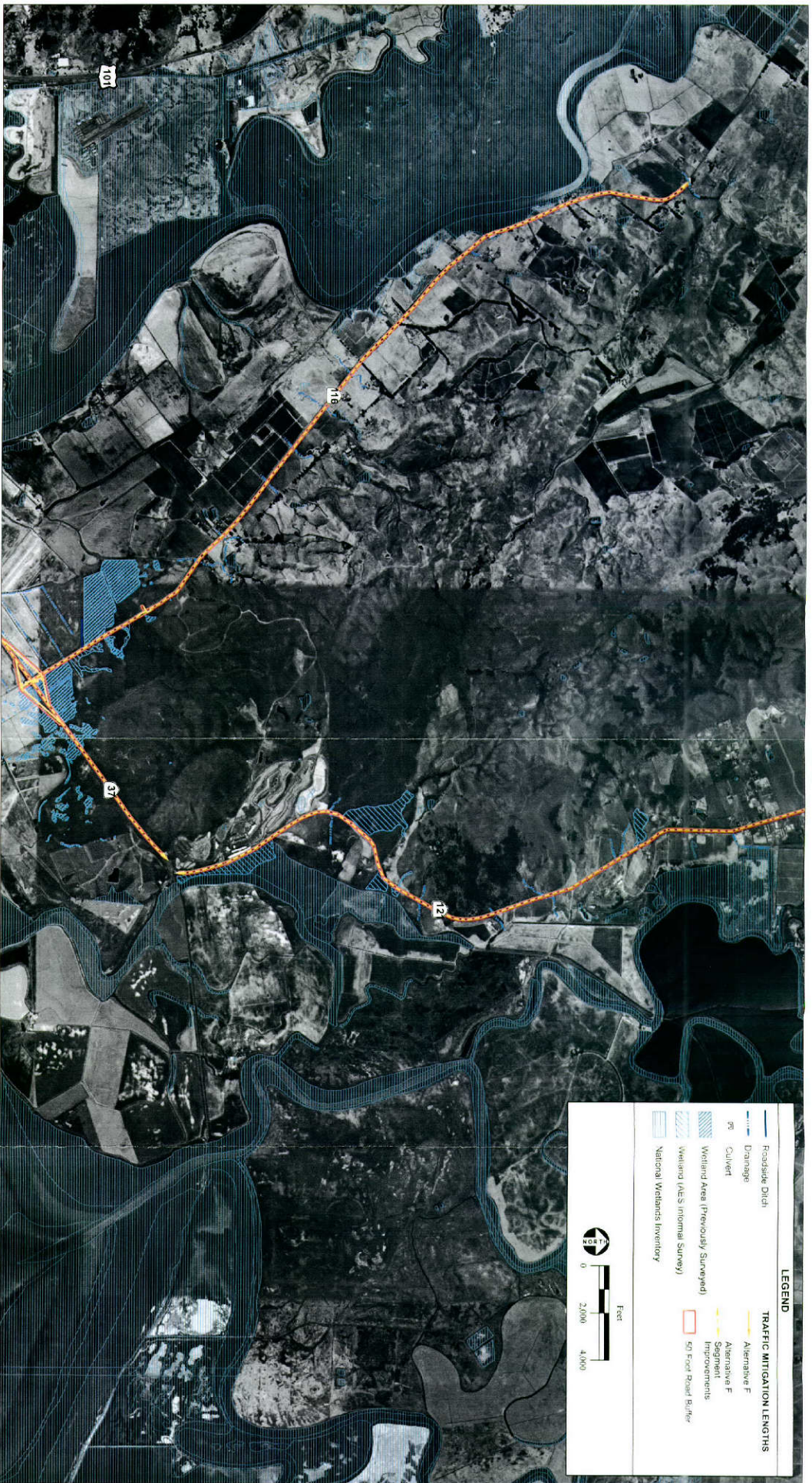


SOURCE: LandVoyage aerial photograph, 11/1/05; U.S. Dept. of the Interior Fish and Wildlife Service Office of Biological Services, 1973; AES 2007

Graton Rancheria Casino and Hotel EIS / 203523 ■

Closeup-View of Intersection 13 - Alternative F

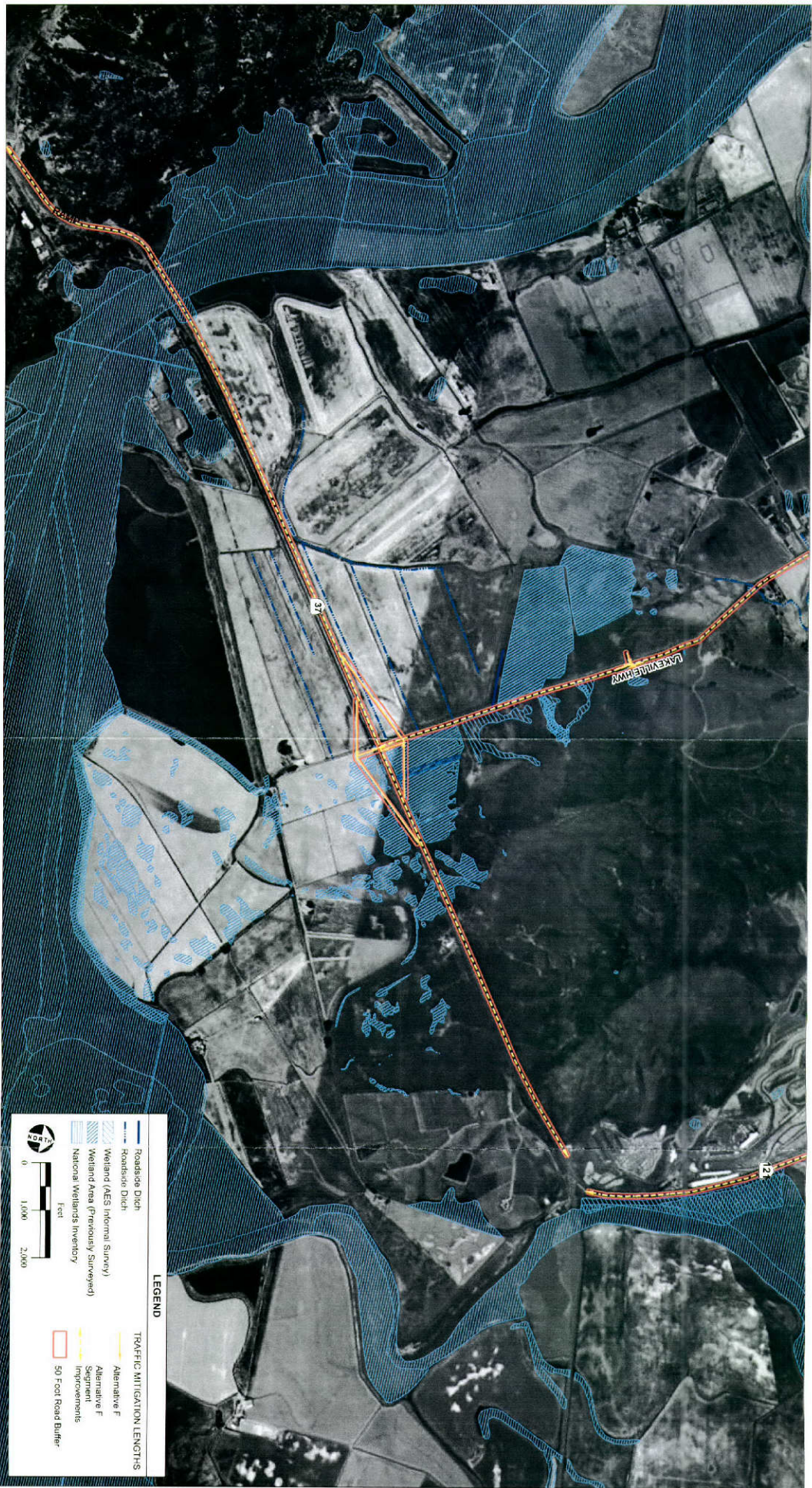




SOURCE: Google Earth Aerials, 2005; Hoffman Broadway, 2006; U. S. Dept. of the Interior Fish and Wildlife Service Office of Biological Services, 1973; AFS 2007

Lakeville Highway from SR-37 to US-116

Grant Rancheria Casino and Hotel EIS / 201523



SOURCE: Google Earth Aerial, 2005; Huffman Broadway, 2006; U.S. Dept. of the Interior Fish and Wildlife Service Office of Biological Services, 1973; AHS 2007

SR-37 from US-101 to SR-29

Graton Rancheria Casino and Hotel EIS 201323

*Traffic Mitigation/Indirect Impacts to Waters of the U.S. –
Lakeville Site Photographs*



PHOTO 57

At the northwest corner of Intersection #1 looking west



PHOTO 58

At the northwest corner of Intersection #2 looking north north-east



PHOTO 59

Just west of the northwest corner of Intersection #2 looking west



PHOTO 60

At the southeast corner of Intersection #3 looking south



PHOTO 61

At the northwest corner of Intersection #4 looking southeast



PHOTO 62

At the northeast corner of Intersection #5 looking north



PHOTO 63

At the northwest corner of Intersection #6 looking west



PHOTO 64

At the southeast corner of Intersection #7 looking east



PHOTO 65

At the southwest corner of Intersection #7 looking south



PHOTO 66

At the northwest corner of Intersection #8 looking west



PHOTO 67

At the southwest corner of Intersection #8 looking south



PHOTO 68

At the east side corner of Intersection #9 looking north