

APPENDIX G

Supplemental Scoping Handout

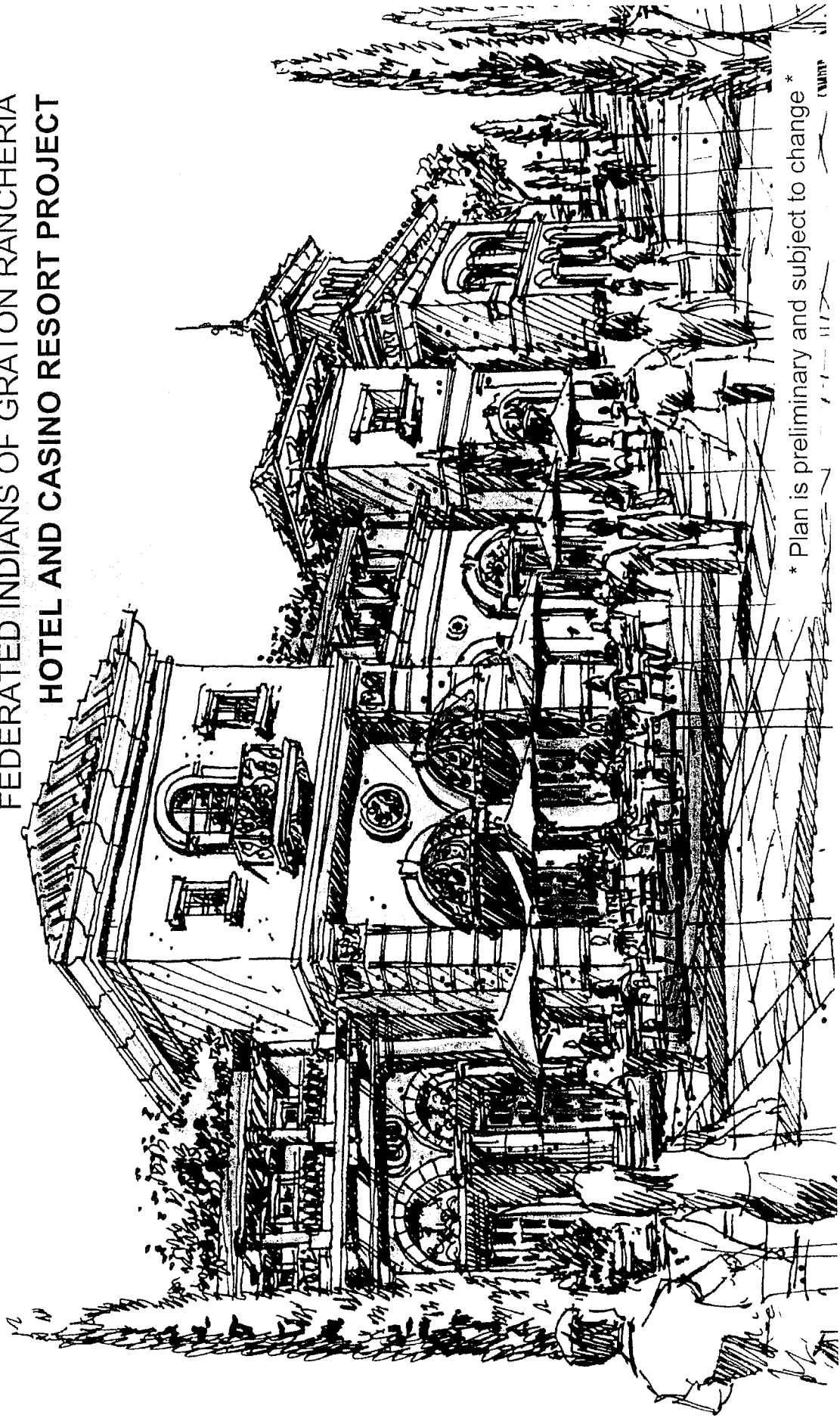
Lead Agency:

National Indian Gaming Commission
1441 L Street NW, Suite 9100
Washington, DC 20005

Supplemental Scoping Hearing

OCTOBER 19, 2005

FEDERATED INDIANS OF GRATON RANCHERIA HOTEL AND CASINO RESORT PROJECT



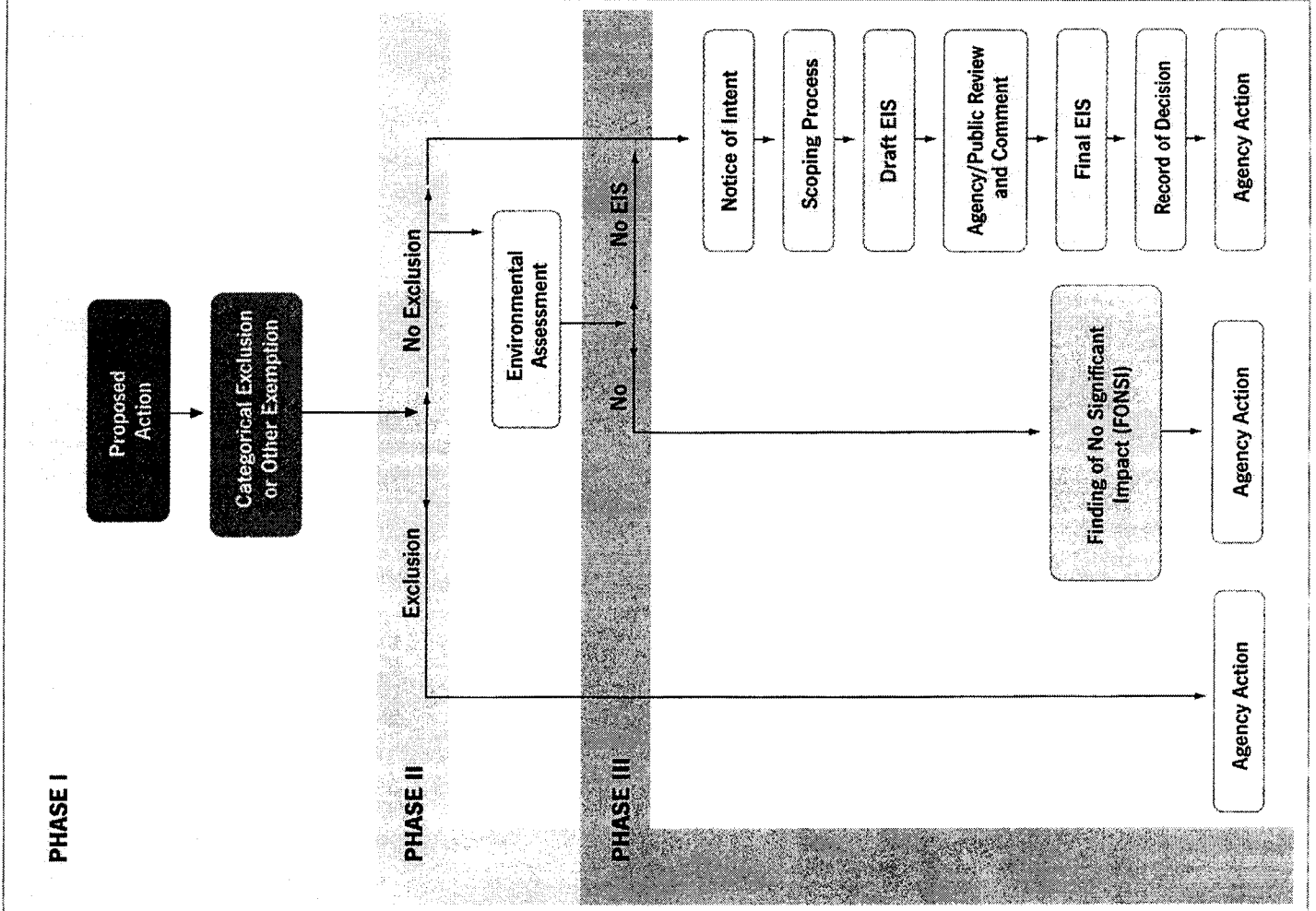
* Plan is preliminary and subject to change *

Overview of the Steps in the NEPA Process

The environmental review process established under NEPA involves three key phases:

- Preliminary screening for NEPA's applicability
- Preparation of an EA in order to determine whether an EIS is required
- Preparation of an EIS, if required

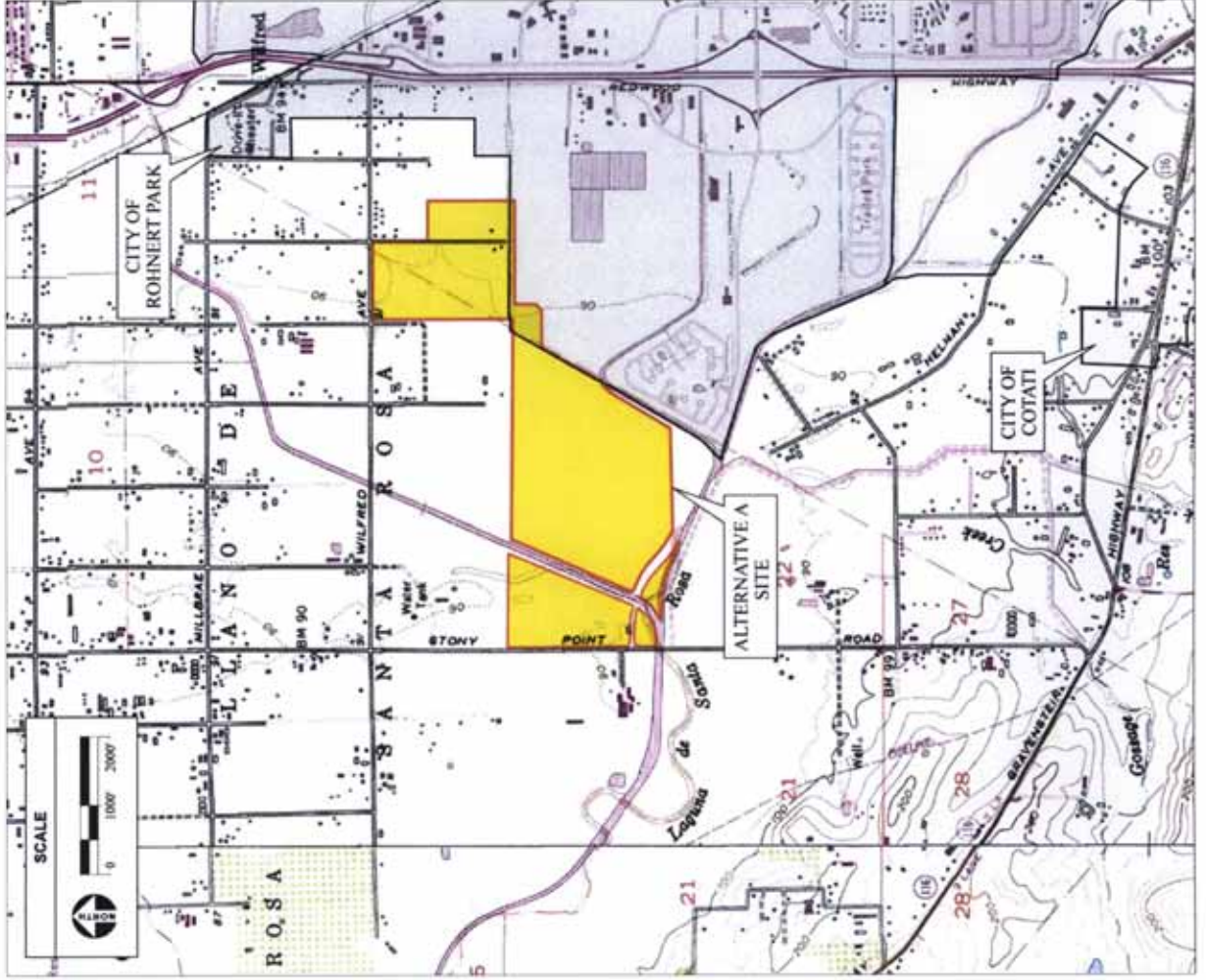
These three phases and other key steps in the NEPA process are shown in Figure 1-6 and are explained, along with detailed steps under each, throughout this book.



Proposed EIS Alternatives

- Alternative A – Proposed Casino/Hotel Resort
- Alternative B – Northwest Casino/Hotel Resort
- Alternative C – Northeast Casino/Hotel Resort
- Alternative D – Reduced Intensity Casino/Hotel Resort
- Alternative E – Business Park
- Alternative F – Lakeville Casino/Hotel Resort
- Alternative G – No Action

Alternative A 253-Acre Site – Vicinity Map



Alternative A

Location of Proposed Casino/Hotel Development

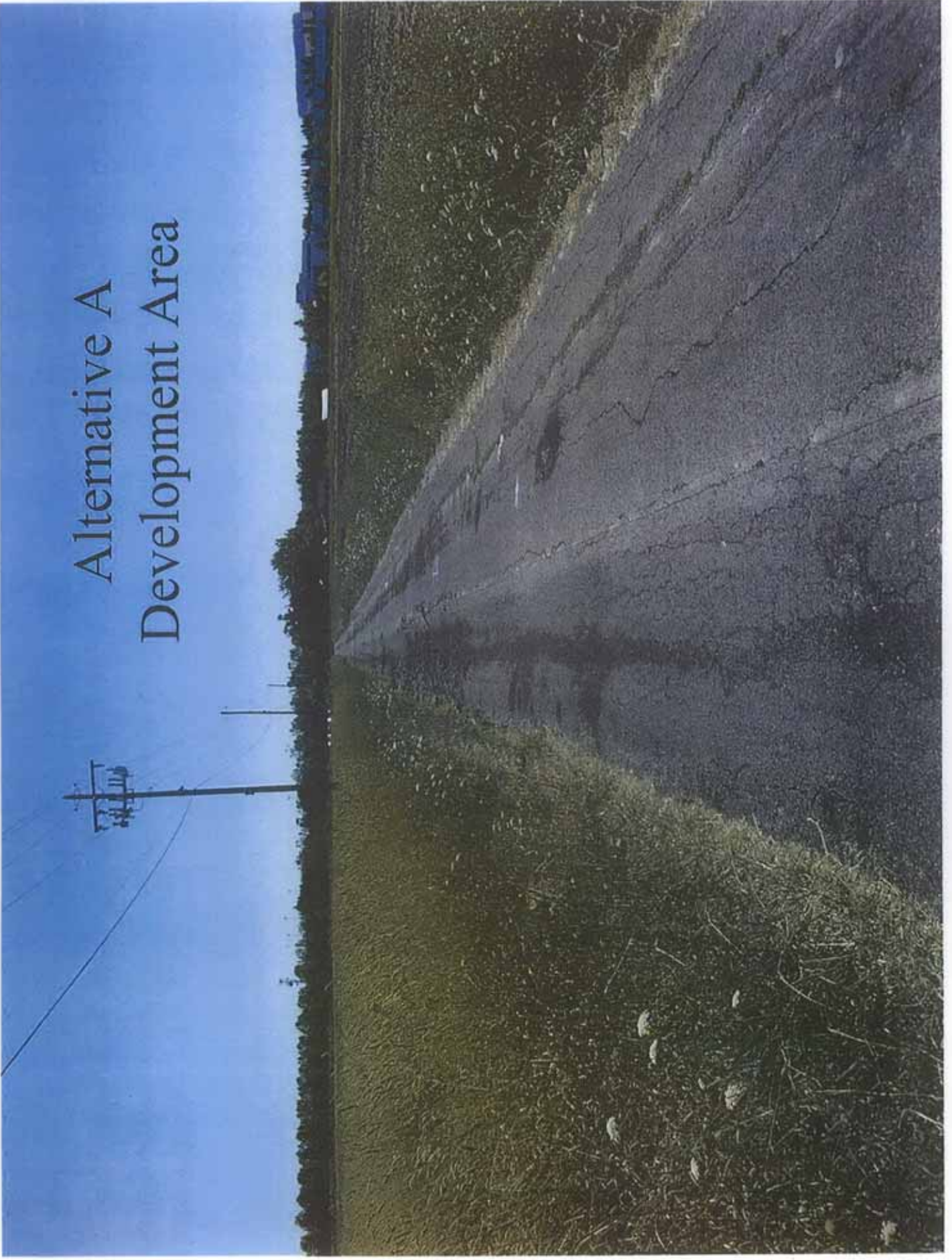


Alternative A Components

Proposed Hotel/Casino Resort

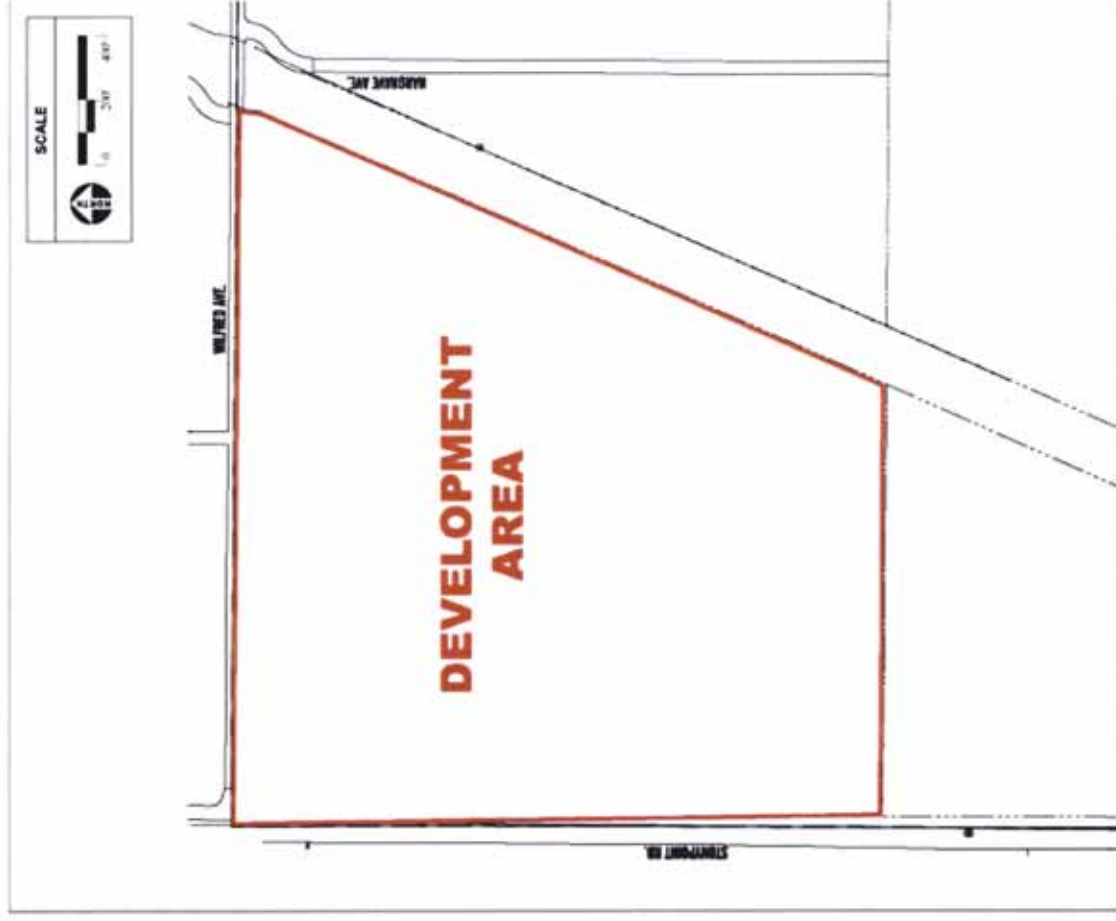
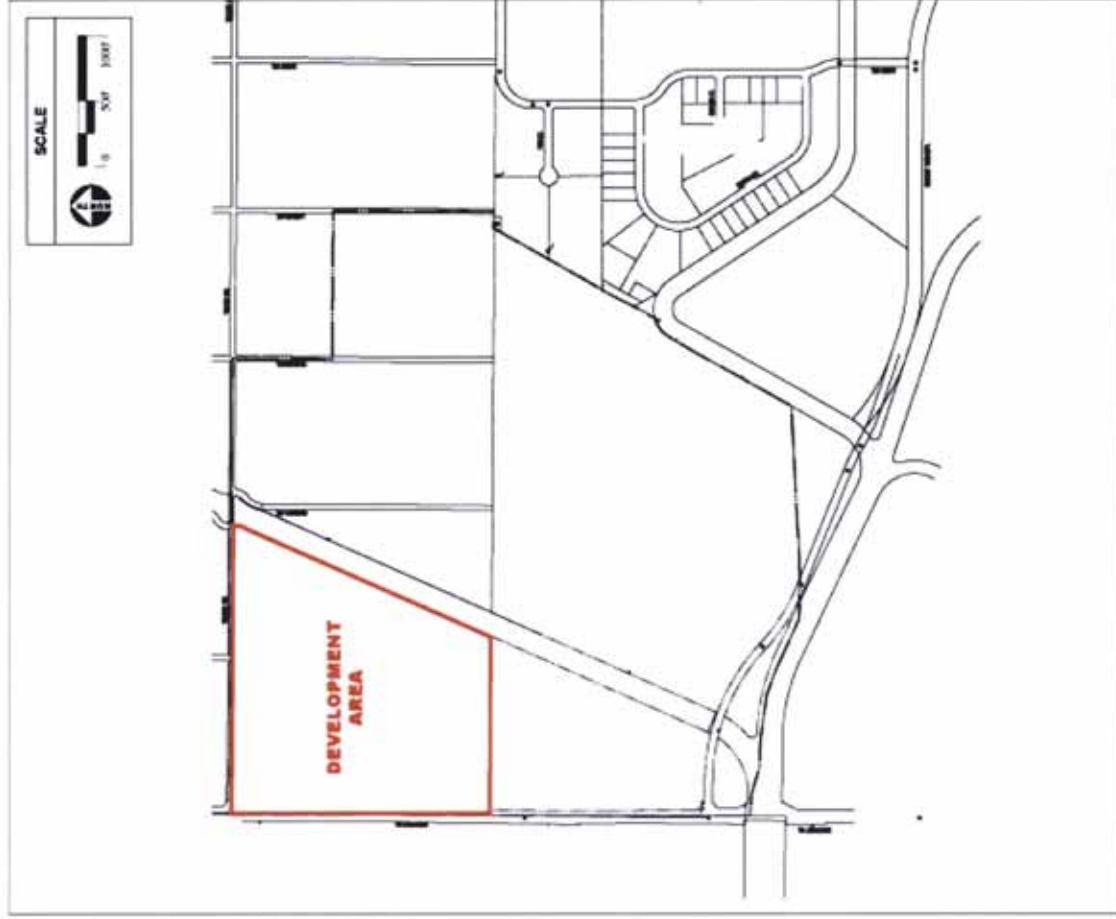
- Approximately 340,000 square foot (s.f.) casino/dining/entertainment facilities
- 30,000 s.f. banquet/meeting facilities
- 300 room hotel (20% suites) with pool
- 20,000 s.f. spa facility
- 4,400 surface parking spaces
- 2,000 parking structure spaces

Alternative A Development Area

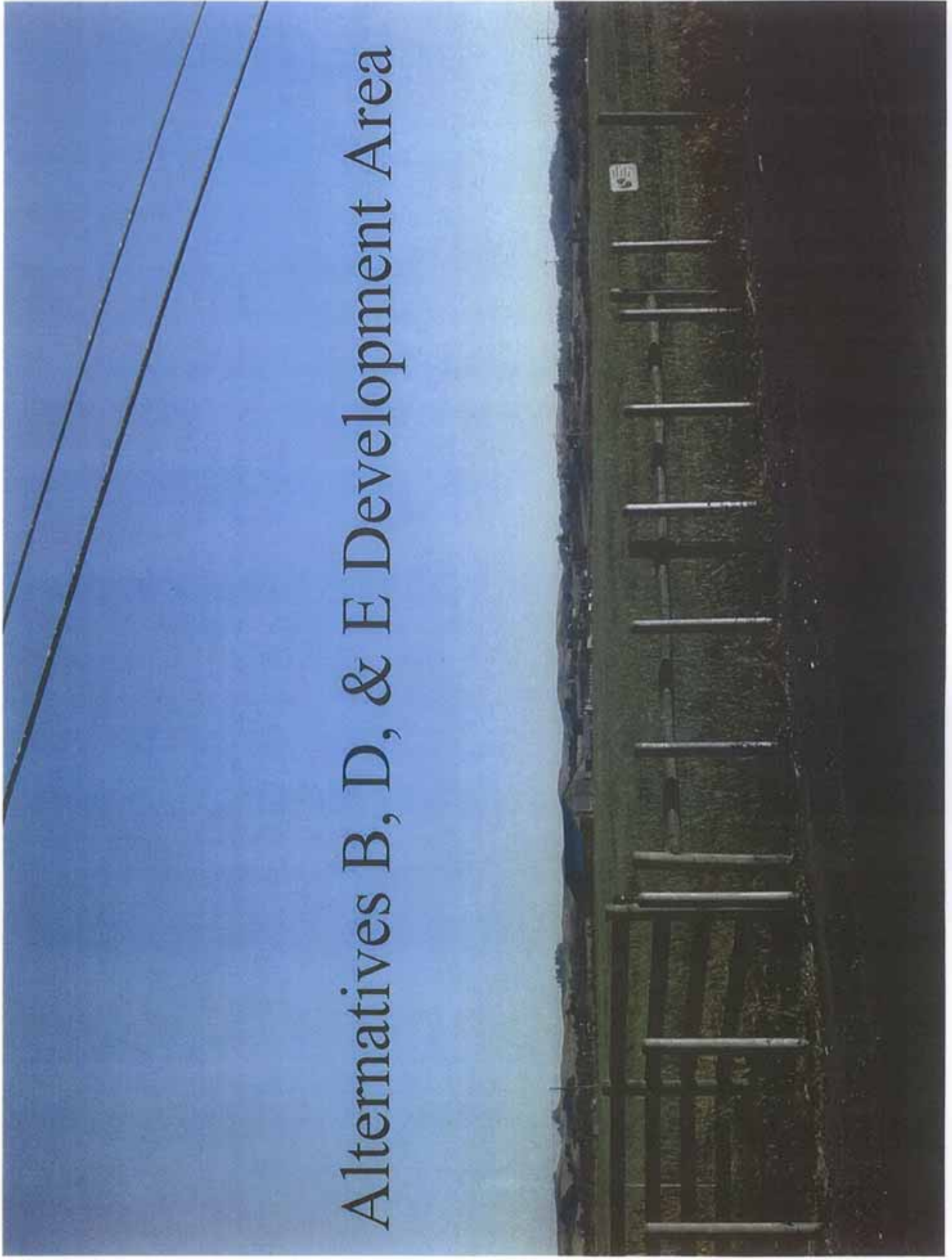


Alternatives B, D, & E

Location of Developments



Alternatives B, D, & E Development Area



Alternative D Components

Reduced Intensity Casino/Hotel Resort

- Approximately 260,000 s.f. casino/dining/entertainment facilities
- 30,000 s.f. banquet/meeting facilities
- 100 room hotel (10% suites) with pool
- 2,650 surface parking spaces
- 2,000 parking structure spaces

Alternative E Components

Business Park

- Approximately 400,000 s.f. set aside for light industrial businesses
- Approximately 100,000 s.f. set aside for commercial businesses
- 2,000 surface parking spaces

Issues to be Analyzed in the EIS

- Air Quality
- Water Supply
- Water Quality
- Flooding/Drainage
- Wastewater Disposal
- Visual Resources
- Noise
- Traffic
- Cultural Resources
- Cumulative Impacts
- Biological Resources
- Land Use
- Emergency Response
- Public Services
- Socioeconomic Conditions
- Geology
- Hazards
- Environmental Justice
- Indirect Impacts

NIGC Contact Information

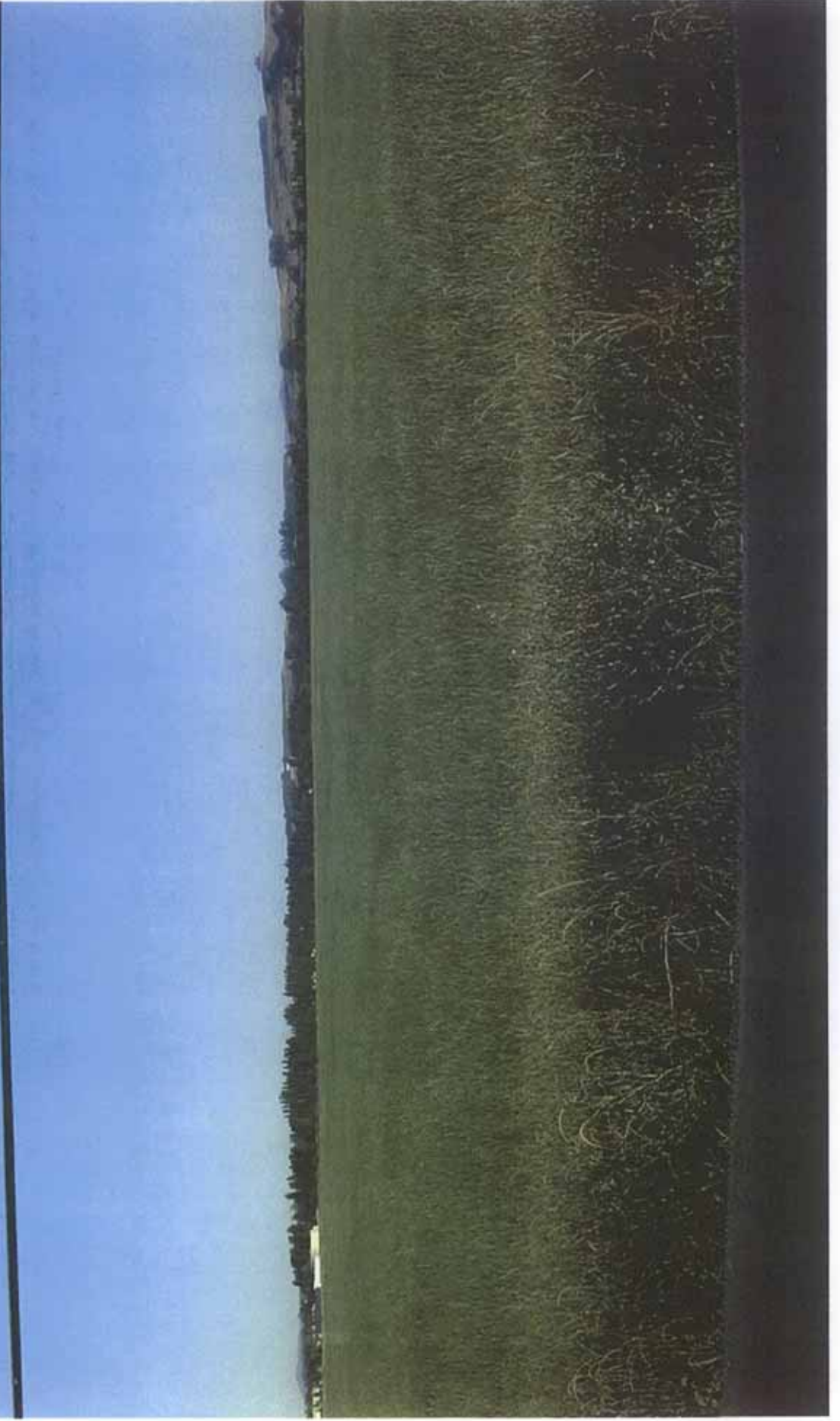
Brad Mehaffy
NEPA Compliance Officer
National Indian Gaming Commission
1441 L Street, NW, Suite 9100
Washington, DC 20005
bradley_mehaffy@nigc.gov

Alternative C

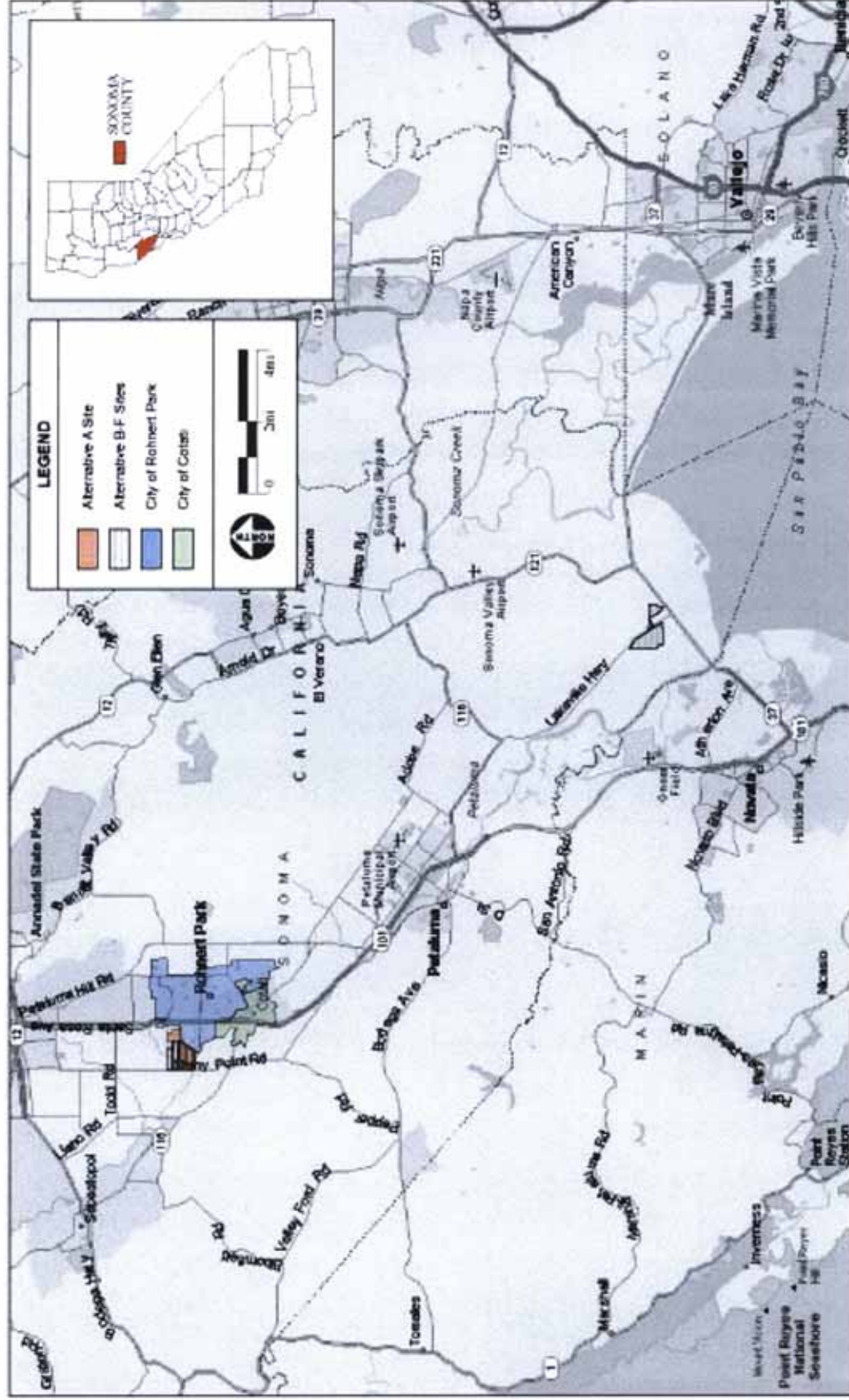
Location of Development



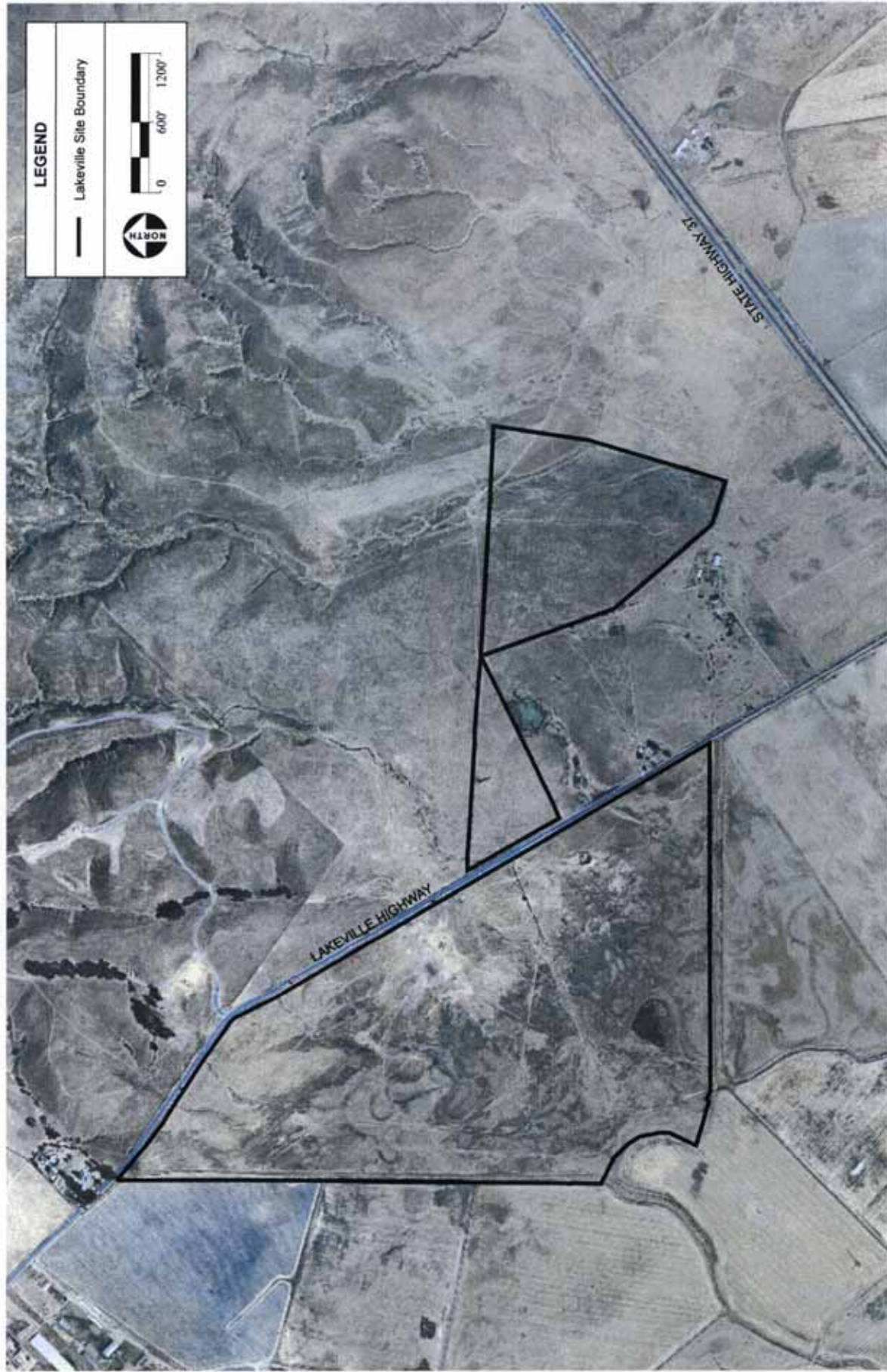
Alternative C Development Area



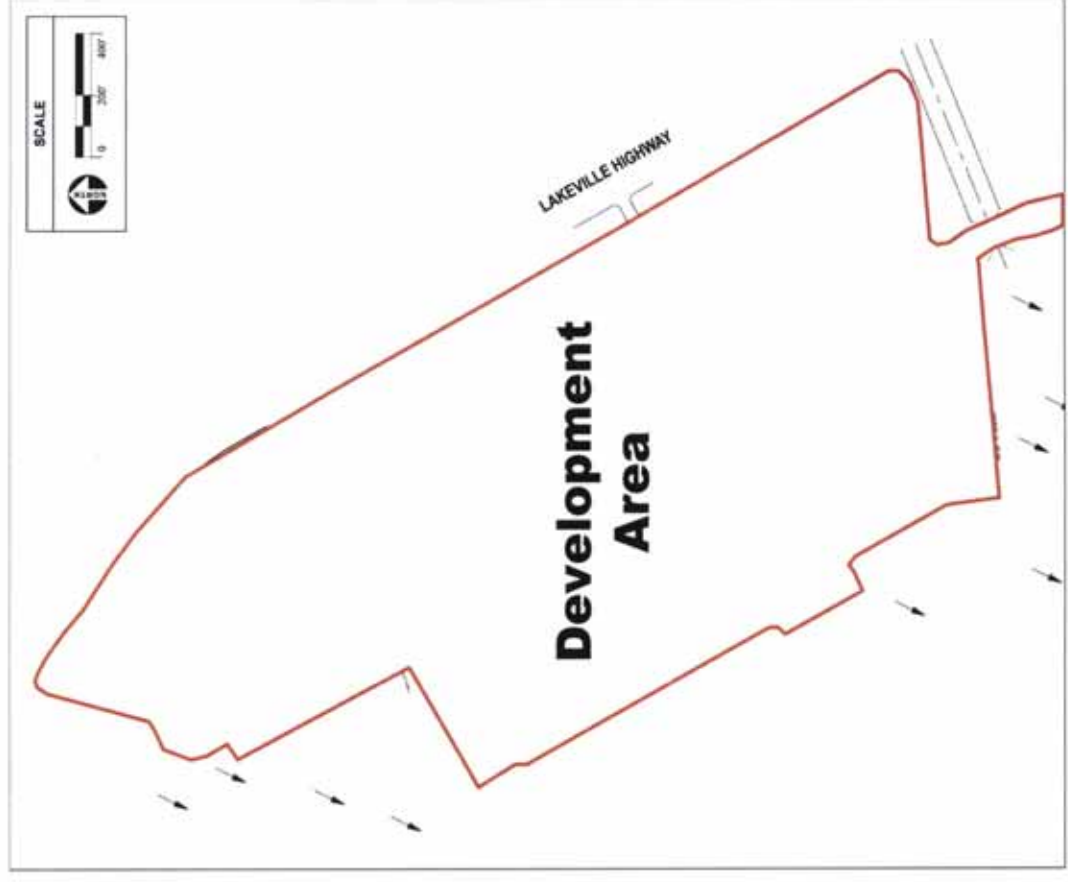
Alternative F Lakeville Site Regional Location



Alternative F Lakeville Site Aerial Photo



Alternative F Location of Development



Alternative F Development Area

